

Roller Shade Installation Instructions

Standard Installation

p - 2 -

Cordless Installation

p - 6 -

Cassette Installation

p - 10 -

Motorization Solar Panel Installation

p - 12 -

Motorization Remote Control Programming

p - 20 -

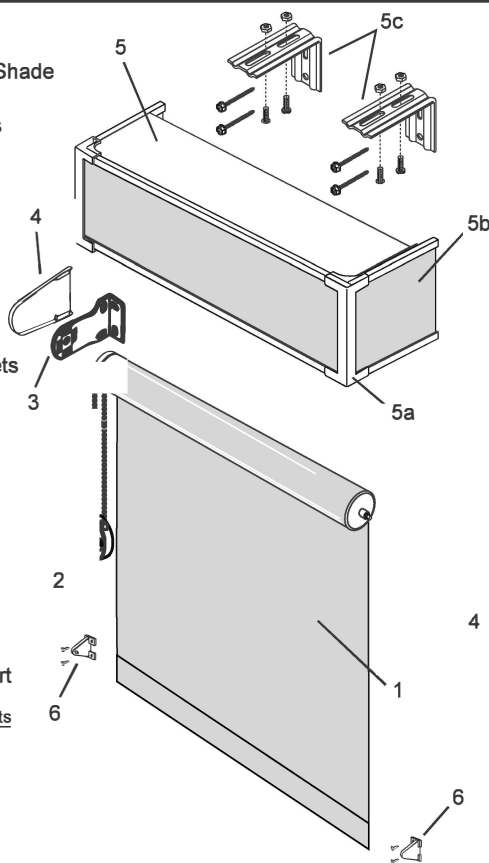
How to Install Roller/Solar Shades Continuous Loop Clutch Standard Brackets

Parts Listing

1. Continuous Loop Shade
2. Chain Guide
3. Mounting Brackets

Optional Items

4. Bracket Covers
5. Channel Valance
- 5a. Valance Corners
- 5b. Valance Returns
- 5c. Valance Mounting Brackets
6. Hold Down Brackets

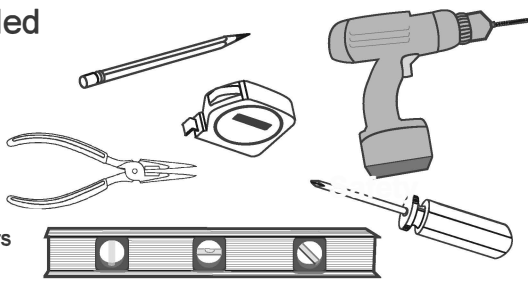


Valance Bracket Chart (Outside Mount Only)

Ordered Width	Brackets
up to 36"	2
36-1/16" to 60"	3
60 1/16" to 84"	4
84 1/16" to 108"	5
108 1/16" to 132"	6
132 1/16" to 144"	7

Tools Needed

- Pencil
- Tape Measure
- Screw Driver
- Level
- Drill
- 1/16" Drill Bit
- 3/16" Drill Bit
- Needle Nose Pliers



Fasteners

The brackets must be securely attached to the mounting surface. The included screws are suitable for mounting into wood and must hit wood studs. If you are mounting to a different surface you must use appropriate fasteners (not included). Use two fasteners per mounting bracket.

Other fastener types for hollow wall, plaster, concrete, brick, etc. (not included)



Wall Plugs Wall Anchor Toggle Bolt

Before You Begin

Take an inventory of the installation parts. You will not receive installation hardware for optional items you did not order.
Review the entire instructions before beginning installation.
Do not remove the paper taped around the shade until instructed to remove it.
Leave the bead chain bundled for easier installation.
Brackets must be mounted level to ensure the shade rolls up properly.
Inside mount start at Step 1A.
Outside mount start at Step 1B.

! WARNING

Young children can STRANGLE in cord and bead chain loops. They can also wrap cords around their necks and STRANGLE.

Always keep cords and bead chains out of children's reach.

Move cribs, playpens, and other furniture away from cords and bead chains. Children can climb furniture to get to cords.

Attach chain guide to wall or floor. This can prevent children from pulling cords and bead chains around their necks. Fasteners provided with the chain guide may not be appropriate for all mounting surfaces. Use appropriate anchors for the mounting surface conditions.

4-1/2" #8 Slotted
Hex Head Screws

Molly E

For wide or heavy shades, use two people positioned at each end of the shade.

1. Raise the shade to the full rolled up position.
2. Uninstall the chain guide by removing the two mounting screws.
3. Press upward on the clutch end of the shade to unlock the tabs from the mounting bracket and push lightly toward the spring pin end until the clutch tabs are clear of the mounting bracket. Drop down the clutch side below the bracket and pull the spring pin end clear of its mounting bracket.

INSIDE/CEILING MOUNT

STEP 1A Mounting the brackets

Brackets for inside mount can be oriented for side, ceiling or top mounting to the window frame. Determine the best orientation for your application.

Measure the largest radius of the shade. Depending on the size of your shade it may be the clutch or the rolled fabric.

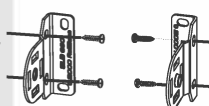
Side mount will generally give you the smallest light gap along the top of the shade. Add 1/4" for clearance to the shade radius, measure down from the top window frame and make a mark. If you have a channel valance increase the clearance to 5/16". Locate the center hole of the bracket on this mark.

If brackets are ceiling/top mounted, position them far enough forward away from the window to accommodate the largest shade radius and so the shade will clear any window frames, locks or other obstacles.

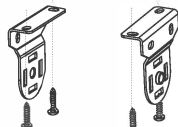
Critical note: Brackets must be mounted level to ensure the shade rolls up properly.

Once bracket location has been determined, mark the mounting hole locations with a pencil, drill pilot holes with a 1/16" drill bit and screw brackets into place. If you do not have a channel valance proceed to Step 3.

Side Mount



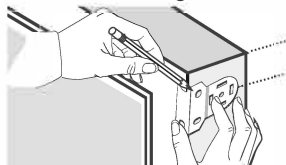
Ceiling/Top Mount



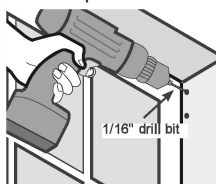
Determine largest shade radius. It may be the fabric or clutch control.



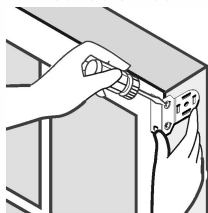
Mark mounting holes



Drill pilot holes



Mount brackets



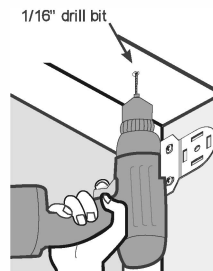
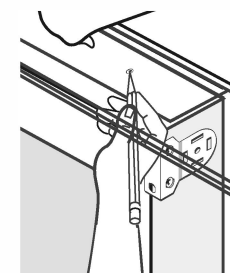
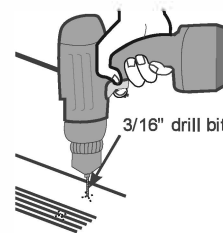
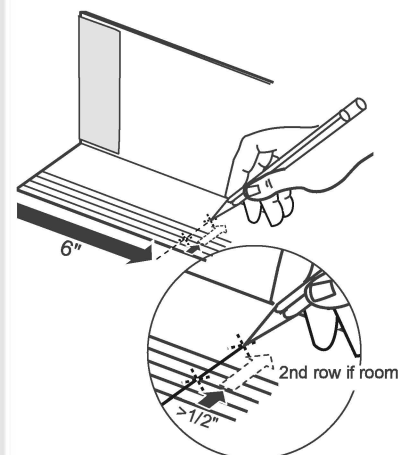
Take the valance down from the window and turn upside down. Measure 6" in from each end and a minimum of 1/2" up and mark with a pencil. Space additional screws equally across the width of the valance.

If window frame depth is available, another row of screws will provide additional support.

Using a 3/16" drill bit, drill a hole at each marked location.

Place the valance into the window and align the back edge to the pencil mark in the window frame. Use the valance as a template to mark the valance hole locations on the inside of the window frame.

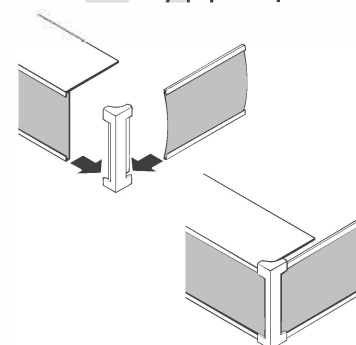
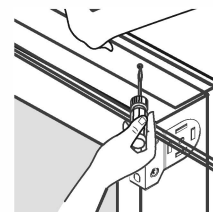
Using a 1/16" drill bit, drill a pilot hole for the screw at each mark.



Screw the valance into place.

If the valance extends in front of the wall surface, attach the valance corners and valance returns. The valance returns can be trimmed to length with a scissor.

Proceed to Step 3.

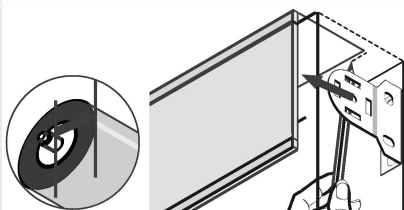
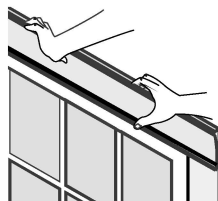
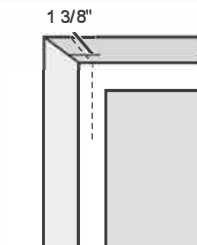


STEP 2A Mounting the optional channel valance

Hold the valance up with the fabric facing the room and center over the window opening. The top of the valance must extend into the window frame at least 1 3/8".

To mount the valance face flush with the wall, mark at 3" from the front. The corners and returns are not used with a flush mounted valance. The fabric insert is made 1/4" larger on each side to extend into the valance corner. If desired, the fabric can be peeled back and the vinyl insert can be cut with scissors.

The valance must be mounted far enough in front of the brackets to accommodate the largest shade radius. Measure from the center of the round hole in the bracket plus 1/4" clearance. Mark the back of the valance along the top of the window frame with a pencil.

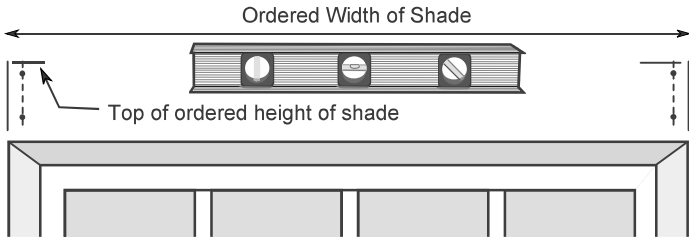
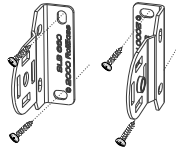


OUTSIDE MOUNT

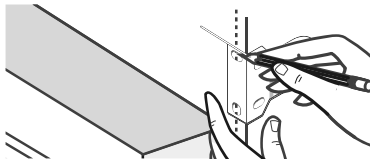
STEP 1B Mounting the brackets

Brackets are mounted to the wall or front of the window molding.

Critical note: Brackets must be mounted level to ensure the shade rolls up properly.



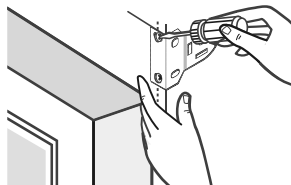
Your outside mount shade has been manufactured to the ordered width measured from the outside edge of the bracket to the outside edge of the other bracket. Use a tape measure to mark the left and right side of the ordered shade width. Mark the top of the ordered shade height.



Place the outside edge of the bracket along the vertical mark and top edge of the bracket on the horizontal mark. Mark the mounting holes with a pencil.



Using a 1/16" drill bit, drill a pilot hole for each screw location.

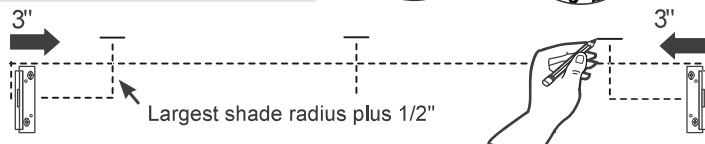
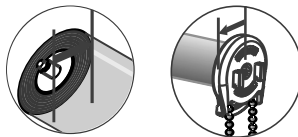


Screw the brackets into place.

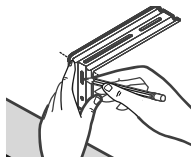
If you do not have a channel valance proceed to Step 3.

STEP 2B Mounting the optional channel valance

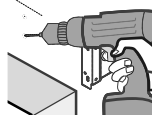
Measure the largest radius of the shade. Depending on the size of your shade it may be the clutch or the rolled fabric.



Measure up from the center of the bracket the measured radius plus 1/2" for clearance and in 3" from each side and make a mark. Center additional valance bracket locations equally across the width.

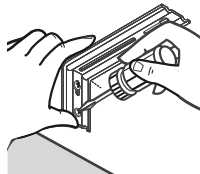


Align the top edge of a valance mounting bracket with each location mark and mark the screw hole locations.



Using a 1/16" drill bit, drill a pilot hole for each screw location.

Screw the valance brackets into position.



Position the valance on top of the valance brackets with the fabric facing into the room and centered across the shade width.

The valance must be mounted far enough in front of the shade mounting brackets to accommodate the largest shade radius. Measure from the center of the round hole in the bracket plus 1/4" clearance.

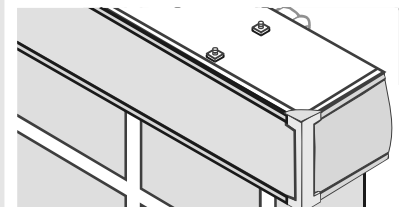
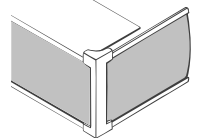
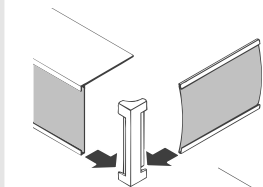
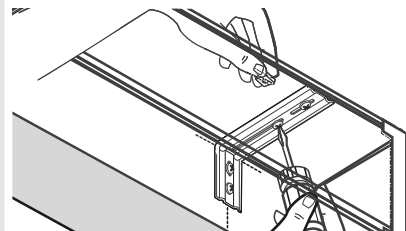
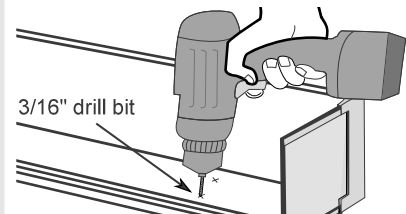
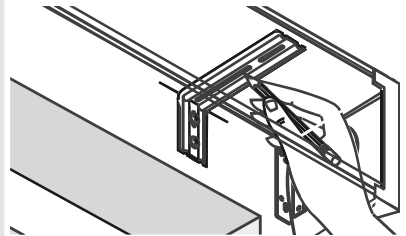
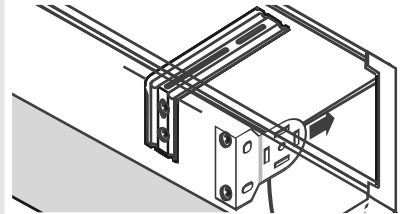
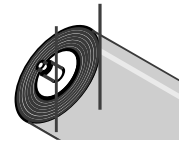
Mark two screw hole positions for each valance mounting bracket onto the valance.

Drill 3/16" holes in the top of the valance at marked locations.

Secure the valance to the valance mounting brackets using the machine screws and nuts. Two per valance mounting bracket.

Attach the valance corners and valance returns to the valance. The valance returns can be trimmed to length with a scissor.

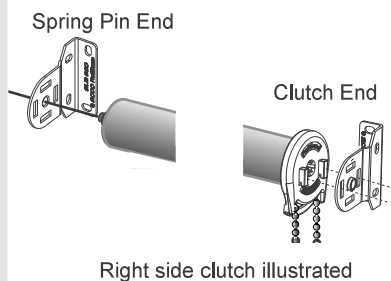
Proceed to Step 3.



STEP 3 Installing the shade into the brackets

Orient the shade so the clutch control is on the ordered side.

Place the spring pin end into the center round hole in the bracket. Press lightly against the bracket to depress the spring pin enough to allow the clutch to clear the other bracket. Align the two square pins on the clutch with the two slots in the mounting bracket. Pull the pins through the bracket slots and then downward until the two hooks have locked securely to the bracket. The chain and clutch should point straight down. If the brackets and shade are properly fit, the spring pin will be slightly compressed.



STEP 4 Installing the chain guide

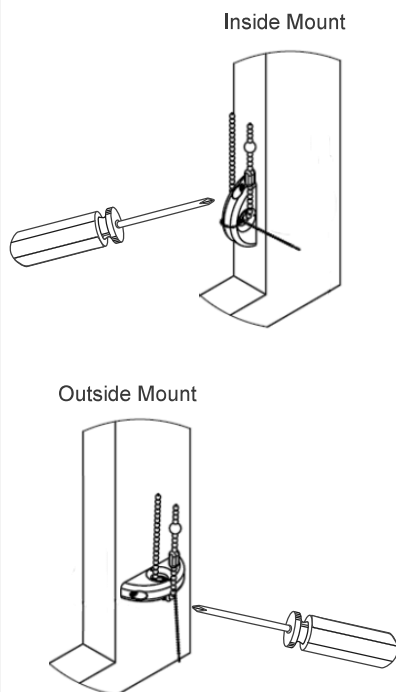
Proper installation of the chain guide is required for proper operation and to minimize the hazard of strangulation of small children by restricting access to the chain control.

Remove the chain and chain guide from the containing package. The chain guide is attached and locked onto the chain. Depress the metal feet by pressing them into the chain guide with your fingers to release the chain guide from the chain. Slide the chain guide to the bottom of the chain loop.

Position the chain guide vertically below the clutch and so the bead connector and bead stops travel smoothly through the opening in the chain guide. Leave only a very small amount of slack in the chain.

Mount the chain guide using the two screws securely to the mounting surface and so the metal lock is fully disengaged.

Critical Note: Removal or failure to properly install the chain guide can cause damage to the clutch, premature chain wear and chain breakage and will void the shade warranty.



STEP 5 Operating the shade

TEAR off the paper bands wrapped around the shade. DO NOT CUT the paper and risk damage to the shade.

If you ordered a regular roll the fabric will unroll from the back side of the roller. Pulling on the front chain will raise the shade and pulling on the back chain will lower the shade.

If you ordered a reverse roll the fabric will unroll from the front of the roller. Pulling on the front chain will lower the shade and pulling on the back chain will raise the shade.

Critical Note: It is important to always pull the chain straight down. DO NOT pull the bead chain at an angle. Pulling the bead chain at an angle will cause clutch failure and chain breakage.

Regular roll



Reverse roll



STEP 6 Adjusting the bead stops

Two bead stops are attached to the chain to provide an upper shade limit and a lower shade limit. To adjust the upper or lower shade limit, remove the appropriate bead stop by snapping it off the bead. If you have metal chain, needle nose pliers may aid in the removal. Position the shade at the new desired point. Reattach the bead stop on the chain bead located just below the clutch.

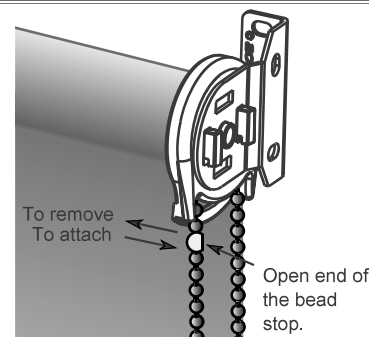


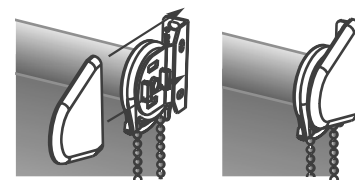
Illustration shows a regular roll with shade near the lower limit.

STEP 7 Adjusting telescoping

Telescoping is when the shade fabric does not roll straight up onto the roller. It is very important that roller shades are mounted level. If they are not, they may not function properly and the fabric will telescope on the roller when raising. A small amount of telescoping can be adjusted by applying a piece of masking tape to the proper side of the shade. Remove the bead stop and roll the shade down 6" below the ordered shade height. If the shade is veering to the right, place a piece of tape as close to roller and left edge as possible. If it is veering left, place the tape on the far right up close to the roller as possible. Use multiple pieces of tape as required and reinstall the bead stop. Shades that exceed a 3 to 1 height to width ratio may have problems telescoping. This is a characteristic of long narrow roller shades. Telescoping adjustments may be required at the time of installation and is not considered a warranty item.

STEP 8 Installing optional bracket covers

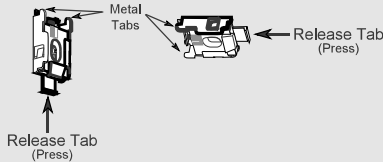
Outside mount shades ordered without a channel valance will come with bracket covers. Slide the slots in the bracket cover over the edge of the shade mounting bracket until secured in position.



Removing the shade

For wide or heavy shades, use two people positioned at each end of the shade. When releasing brackets, start at one end of the shade and work your way to the other.

1. Raise the shade to the full rolled up position.
2. Unlock the raceway from the mounting brackets by pressing the release tab and rotating the raceway away from the locking clip.
3. Release locking tabs for all brackets then unhook the raceway from the metal tabs and lift the shade free of the mounting brackets.



Critical Note:

If you let the hembar flop over the shade roll and you then reinstall the shade into the brackets, the upper stop limit will be lowered by that full wrap of fabric. If this occurs, simply flop the fabric and hembar back over the shade roll prior to installation into the shade brackets.

How to Install Roller/Solar Shades Cordless Raceway System

Parts Listing

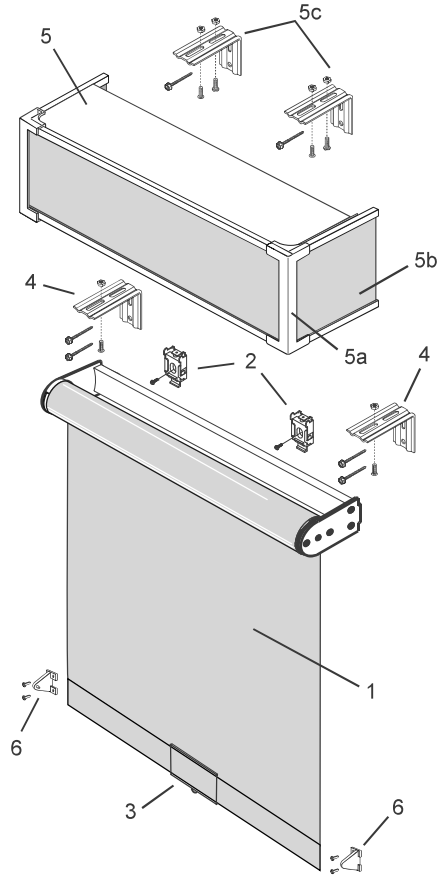
1. Cordless Shade
2. Mounting Brackets
3. Handle/Grip

Optional Items

4. Projection Brackets
5. Channel Valance
- 5a. Valance Corners
- 5b. Valance Returns
- 5c. Valance Mounting Brackets
6. Hold Down Brackets

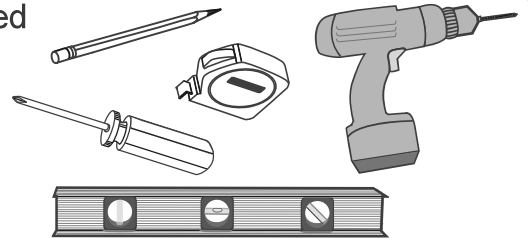
Bracket Chart	
Shade Width	Brackets
up to 38"	2
38 1/16" to 62"	3
62 1/16" to 96"	4

Valance Bracket Chart (Outside Mount Only)	
Ordered Width	Brackets
up to 36"	2
36-1/16" to 60"	3
60 1/16" to 84"	4
84 1/16" to 108"	5
108 1/16" to 132"	6
132 1/16" to 144"	7



Tools Needed

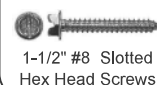
- Pencil
- Tape Measure
- Screw Driver
- Level
- Drill
- 1/16" Drill Bit
- 3/16" Drill Bit



Fasteners

The brackets must be securely attached to the mounting surface. The included screws are suitable for mounting into wood and must hit wood studs. If you are mounting to a different surface you must use appropriate fasteners (not included). Use one fastener per mounting bracket.

Included



Other fastener types for hollow wall, plaster, concrete, brick, etc. (not included)



Before You Begin

Take an inventory of the installation parts. You will not receive installation hardware for optional items you did not order.

Review the entire instructions before beginning installation.

Do not remove the paper taped around the shade until instructed to remove it.

Brackets must be mounted level to ensure the shade rolls up properly.

Inside mount without a channel valance start at Step A1.

Inside mount with a channel valance start at Step B1.

Outside mount start at Step C.

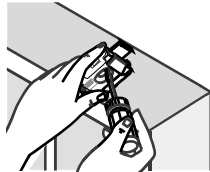
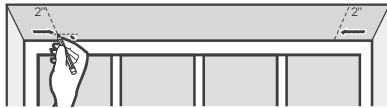
INSIDE/CEILING MOUNT

STEP A1 Mounting the brackets-No Valance

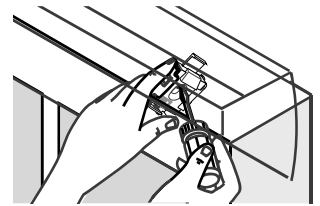
The two outside brackets should be no more than 2" from the ends of the shade. Space additional bracket(s) at equal intervals. Position the brackets far enough forward away from the window so the shade will clear any window frames, locks or other obstacles. All brackets must be in alignment and level across the width of the window.

Once bracket location has been determined, mark the mounting hole locations with a pencil, drill pilot holes with a 1/16" drill bit and screw brackets into place.

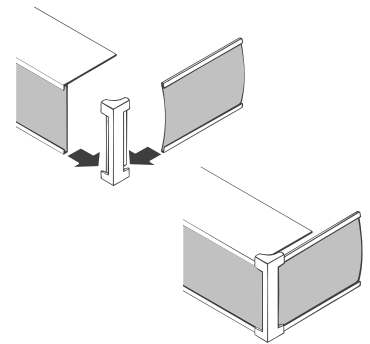
Proceed to Step 4.



Screw the brackets and valance into place.



If the valance extends in front of the wall surface, attach the valance corners and valance returns. The valance returns can be trimmed to length with a scissor.

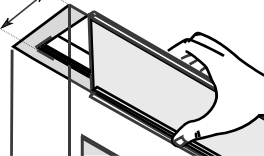


Proceed to Step 4.

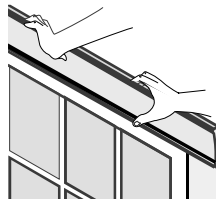
STEP B1 Mounting the Brackets w/Channel Valance

Hold the valance up with the fabric facing the room and center over the window opening. The top of the valance must extend into the window frame at least 1 3/8". Depending on the size of your shade, up to 1" of clearance behind the back of the valance may be required. Mark the back edge of the valance on the window frame with a pencil.

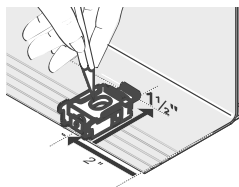
Minimum
1 3/8"



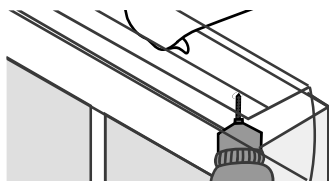
To mount the valance face flush with the wall, mark at 3" from the front. The corners and returns are not used with a flush mounted valance. The fabric insert is made 1/4" larger on each side to extend into the valance corner. If desired, the fabric can be peeled back and the vinyl insert can be cut with scissors.



Take the valance down from the window and turn upside down. Measure 2" in from each end and align the back of the bracket with the back edge of the valance and mark the screw locations with a pencil. Space and mark additional bracket location(s) equally across the width of the valance.



Hold the valance up in window and align the back of the dust cover with the mark you made on the window frame. Drill 1/16" holes through the dust cover and into the window frame at each screw location mark.



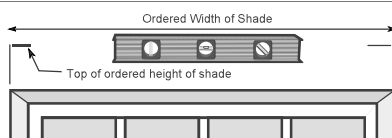
OUTSIDE MOUNT

STEP C Marking the shade location

Brackets are mounted to the wall or front of the window molding.

Your outside mount shade has been manufactured to the ordered width measured from the outside edge to the outside edge of the assembled shade. Use a tape measure to mark the left and right side of the ordered shade width. Mark the top of the ordered shade height.

If you have optional projection brackets proceed to step C1. If you are mounting your bracket directly to the wall proceed to step C2.



Critical note: Brackets must be mounted level to ensure the shade rolls up properly.

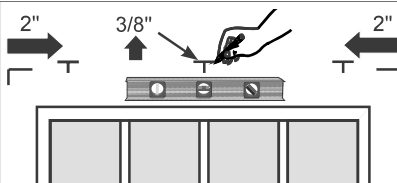
Proceed to
Step C1

Proceed to
Step C2



STEP C1 Mounting optional projection brackets

Measure in 2" from the outside edge of both sides where the shade will be located and 3/8" up from the top of the ordered shade height. Space additional brackets equally and all brackets level.



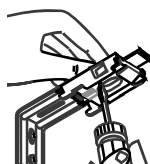
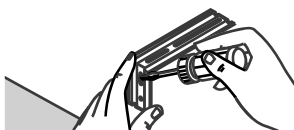
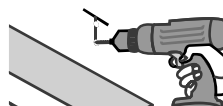
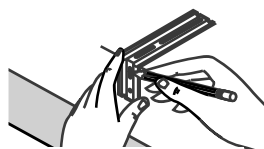
Align the top of the projection bracket with the top mark and centered on the vertical mark. Mark the mounting holes with a pencil.

Using a 1/16" drill bit, drill a pilot hole for each screw location.

Screw the brackets into place.

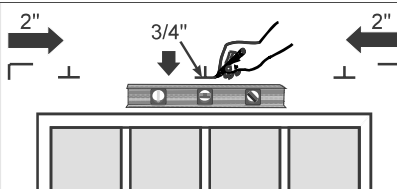
Attach the mounting brackets to the projection brackets using the machine screws and nuts.

If you have a channel valance proceed to Step C3. Otherwise proceed to Step 4.



STEP C2 Mounting the shade brackets

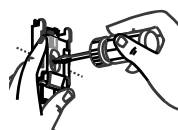
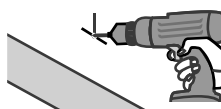
Measure in 2" from the outside edge of both sides where the shade will be located and 3/4" down from the top of the ordered shade height. Space additional brackets equally and all brackets level.



Using a 1/16" drill bit, drill a pilot hole for each screw location.

Screw the brackets into place.

If you have a channel valance proceed to Step C3. Otherwise proceed to Step 4.



STEP C3 Mounting the optional channel valance

Measure in 4 1/2" from the outside edge of both sides where the shade will be located and 3/4" up from the top of the ordered shade height and mark the screw location with a pencil. Use the top hole only. Space additional brackets equally and all brackets level. If you have used optional projection brackets (Step C1), mount the valance brackets at the same height.

Using a 1/16" drill bit, drill a pilot hole for each screw location.

Screw the valance brackets into position.

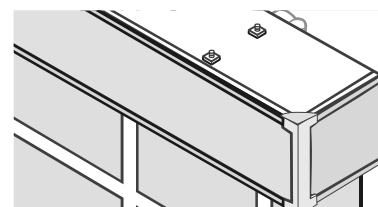
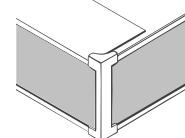
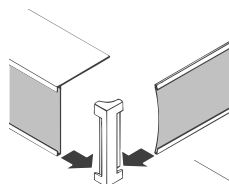
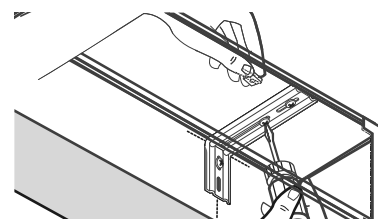
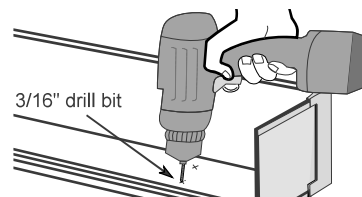
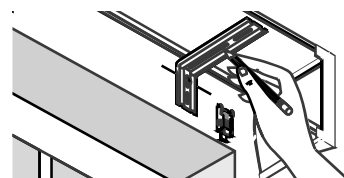
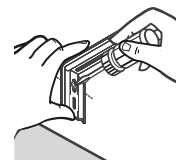
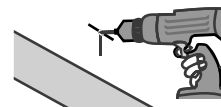
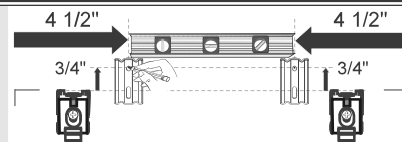
Position the valance on top of the valance brackets with the fabric facing into the room and centered across the shade width. The valance must be mounted far enough forward so the valance does not interfere with the shade. Mark two screw hole positions for each valance mounting bracket onto the valance.

Drill 3/16" holes in the top of the valance at marked locations.

Secure the valance to the valance mounting brackets using the machine screws and nuts. Two per valance mounting bracket.

Attach the valance corners and valance returns to the valance. The valance returns can be trimmed to length with a scissor.

Proceed to Step 4.

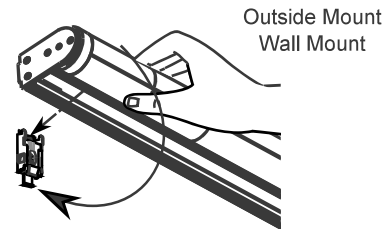
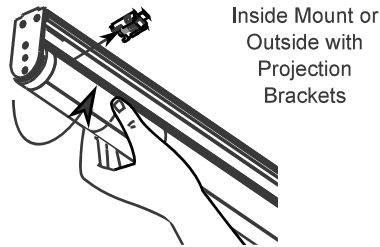


STEP 4 Installing the shade into the brackets

Hook the inside groove of the raceway bar onto the metal bracket lips then rotate the raceway to snap blind into place.

Critical Note:

Ensure each bracket "clicks" and locks into place.

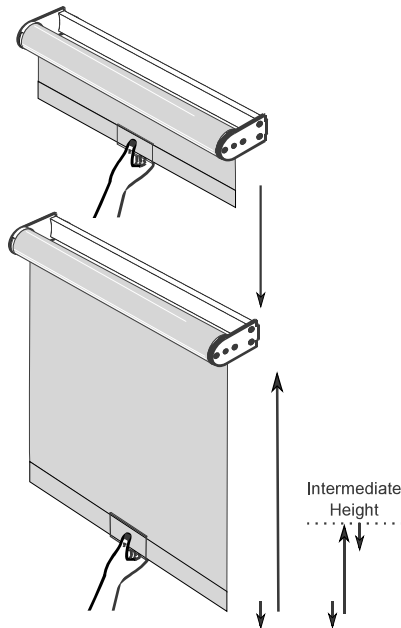


STEP 5 Operating the shade

TEAR off the paper bands wrapped around the shade. DO NOT CUT the paper and risk damage to the shade.

To Lower: Grasp the handle/grip on the bottom hembar and pull straight down to the desired height. If required, give a small tug downward to lock into position.

To Raise: Grasp the handle/grip on the bottom hembar and tug downward quickly to release the shade then raise to the desired height. The shade will automatically stop at the upper limit. To stop at an intermediate position, stop at desired height, give a small tug downward to lock into position.



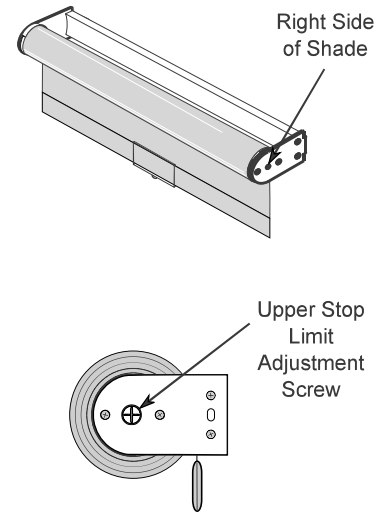
STEP 6 Adjusting telescoping

Telescoping is when the shade fabric does not roll straight up onto the roller. It is very important that roller shades are mounted level. If they are not, they may not function properly and the fabric will telescope on the roller when raising. A small amount of telescoping can be adjusted by applying a piece of masking tape to the proper side of the shade. Roll the shade down approximately 6" below the ordered shade height. If the shade is veering to the right, place a piece of tape as close to roller and left edge as possible. If it is veering left, place the tape on the far right up close to the roller as possible. Use multiple pieces of tape as required. Shades that exceed a 3 to 1 height to width ratio may have problems telescoping. This is a characteristic of long narrow roller shades. Telescoping adjustments may be required at the time of installation and is not considered a warranty item.

STEP 7 Adjusting the upper stop limit

The upper stop limit has been preset at the factory. Adjustment should only be needed if you have a different preference.

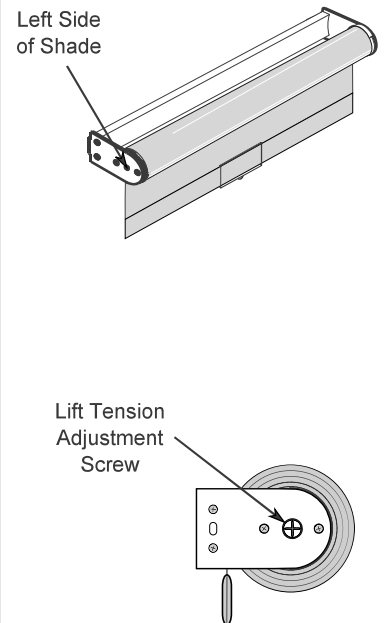
Raise the shade to the upper stop limit. Inside mount shades will need to be removed from the mounting brackets to access the adjustment screw (see Removing the shade section). The stop adjustment screw is located on the right side of the shade. Use a large blade screw driver so you do not strip the adjustment screw. To lower the upper stop limit rotate the adjustment screw clockwise. To raise the upper stop limit rotate the adjustment screw counter-clockwise. The hembar should hang freely. Raise the shade to the full up position and reinstall the shade into the mounting brackets.



STEP 8 Adjusting the lift tension

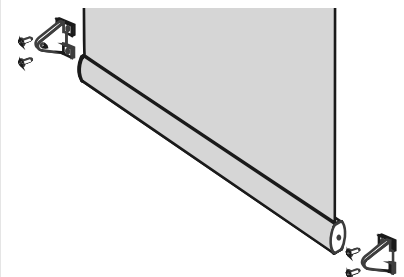
The lift tension has been preset at the factory. Adjustment should only be needed if you have a different preference.

Raise the shade to the upper stop limit. Inside mount shades will need to be removed from the mounting brackets to access the adjustment screw (see Removing the shade section). The lift tension adjustment screw is located on the left side of the shade. Use a large blade screw driver so you do not strip the adjustment screw. To increase the tension, lower the shade about 6" then rotate the adjustment screw clockwise. To decrease the tension rotate the adjustment screw counter-clockwise. There must be enough tension or the shade will not reach the upper stop limit during operation. Raise the shade to the full up position and reinstall the shade into the mounting brackets.



STEP 9 Installing optional hold down brackets

Lower the shade down to the desired location for the hold down brackets. Pierce the pre molded hole in the end caps with a 1/16" drill bit. Place the hold down bracket pin in the hole and align the brackets onto the mounting surface. Mark the screw holes with a pencil. Using a 1/16" drill bit, drill pilot holes for the screws. Secure the hold down brackets with the mounting screws.



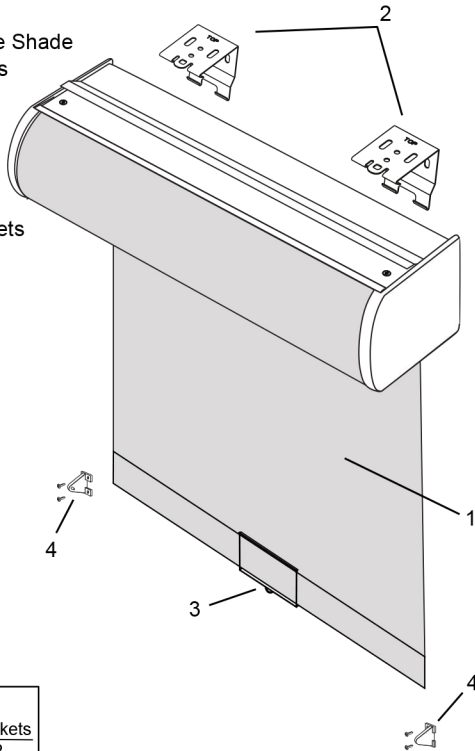
How to Install Roller/Solar Shades Cordless Cassette System

Parts Listing

1. Cordless Cassette Shade
2. Mounting Brackets
3. Handle/Grip

Optional Items

4. Hold Down Brackets

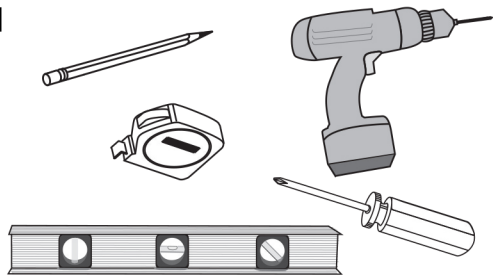


Bracket Chart

Shade Width	Brackets
up to 60"	2
60 1/16" to 96"	3
96 1/16" to 120"	4

Tools Needed

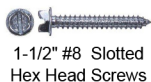
- Pencil
- Tape Measure
- Screw Driver
- Level
- Drill
- 1/16" Drill Bit



Fasteners

The brackets must be securely attached to the mounting surface. The included screws are suitable for mounting into wood and must hit wood studs. If you are mounting to a different surface you must use appropriate fasteners (not included). Use two fasteners per mounting bracket.

Included



1-1/2" #8 Slotted
Hex Head Screws

Other fastener types for hollow wall, plaster, concrete, brick, etc. (not included)



Molly Bolt



Wall Plugs



Wall Anchor



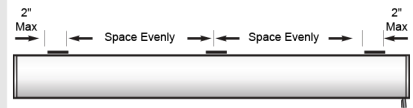
Toggle Bolt

Before You Begin

Take an inventory of the installation parts. You will not receive installation hardware for optional items you did not order. Review the entire instructions before beginning installation. Do not remove the paper taped around the shade until instructed to remove it. Brackets must be mounted level to ensure the shade rolls up properly.

STEP 1 Mounting the brackets

The two outside brackets should be no more than 2" from the ends of the cassette. Space additional bracket(s) at equal intervals.



Critical note: Brackets must be mounted level to ensure proper installation and so the shade rolls up properly.

STEP 1A Inside Mount

Brackets for inside/ceiling mount are mounted through the top bracket holes.

To flush mount the front of the cassette with the wall surface locate the back of the bracket at the following measurement from the front of the window frame.

Medium Cassette 3 3/4"
Large Cassette 4 1/2"

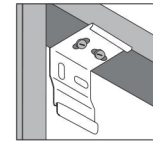
Once bracket location has been determined, mark the mounting hole locations with a pencil.

Using a 1/16" drill bit, drill a pilot hole for each screw location.

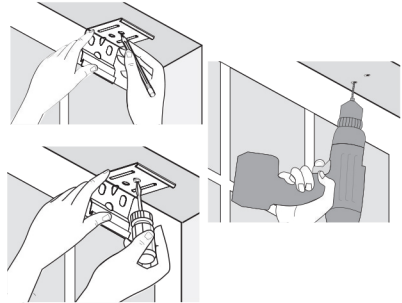
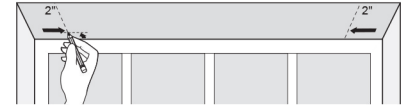
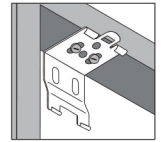
Screw brackets into place.

Proceed to Step 2.

Medium
Cassette Bracket



Large
Cassette Bracket

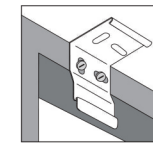


STEP 1B Outside Mount

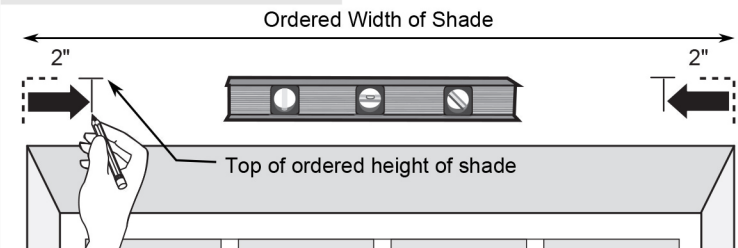
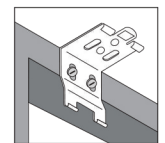
Brackets for outside mount are mounted to the wall or front of the window molding using the holes in the back of the bracket.

Your outside mount shade has been manufactured to the ordered width measured from the outside edges of the cassette (including the caps). Use a tape measure to mark a maximum of 2" in from the left and right side of the ordered shade width. Mark the top of the ordered shade height.

Medium
Cassette Bracket



Large
Cassette Bracket

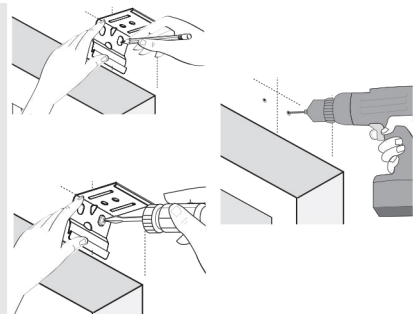


Place the center of the bracket along the vertical mark and top edge of the bracket on the horizontal mark. Mark the mounting holes with a pencil.

Using a 1/16" drill bit, drill a pilot hole for each screw location.

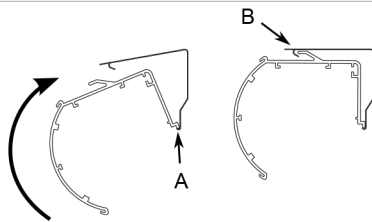
Screw the brackets into place.

Proceed to Step 2.



STEP 2 Installing the cassette shade

Center the cassette with the back lip (A) resting on the bottom hooks of all brackets. Push the front of the cassette firmly upwards and toward the window until the groove at the top of the cassette snaps into the top bracket clip, (B) as shown.

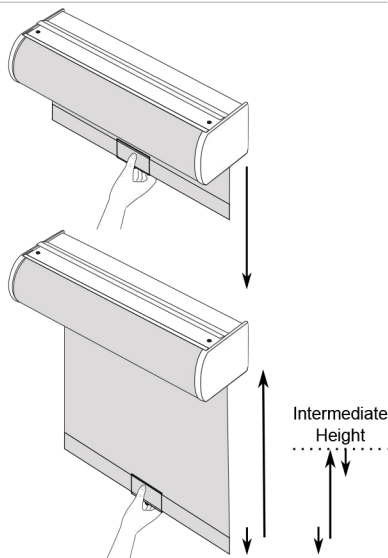


STEP 3 Operating the shade

TEAR off the paper bands wrapped around the shade. DO NOT CUT the paper and risk damage to the shade.

To Lower: Grasp the handle/grip on the bottom hembar and pull straight down to the desired height. If required, give a small tug downward to lock into position.

To Raise: Grasp the handle/grip on the bottom hembar and tug downward quickly to release the shade then raise to the desired height. The shade will automatically stop at the upper limit. To stop at an intermediate position, stop at desired height, give a small tug downward to lock into position.



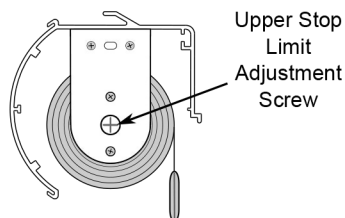
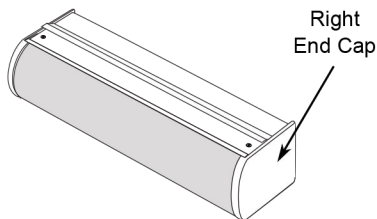
STEP 4 Adjusting telescoping

Telescoping is when the shade fabric does not roll straight up onto the roller. It is very important that roller shades are mounted level. If they are not, they may not function properly and the fabric will telescope on the roller when raising. A small amount of telescoping can be adjusted by applying a piece of masking tape to the proper side of the shade. Remove the bead stop and roll the shade down 6" below the ordered shade height. If the shade is veering to the right, place a piece of tape as close to roller and left edge as possible. If it is veering left, place the tape on the far right up close to the roller as possible. Use multiple pieces of tape as required and reinstall the bead stop. Shades that exceed a 3 to 1 height to width ratio may have problems telescoping. This is a characteristic of long narrow roller shades. Telescoping adjustments may be required at the time of installation and is not considered a warranty item.

STEP 5 Adjusting the upper stop limit

The upper stop limit has been preset at the factory. Adjustment is only needed if you have a different preference.

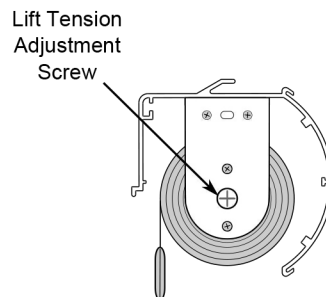
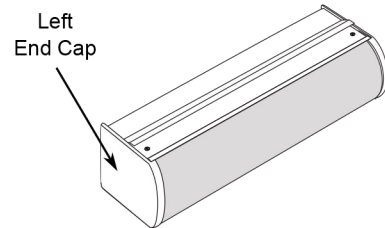
Use a large blade screw driver so you do not strip the adjustment screw. Raise the shade to the upper stop limit. Remove the cassette from the brackets (see Removing the shade section). Remove the right side cassette end cap to expose the stop adjustment screw. To lower the upper stop limit rotate the adjustment screw clockwise. To raise the upper stop limit rotate the adjustment screw counter-clockwise. The hembar should hang freely. Reinstall the cassette end cap and install the cassette back into the mounting brackets.



STEP 6 Adjusting the lift tension

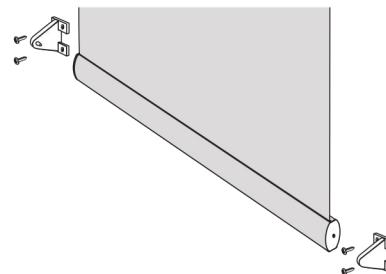
The lift tension has been preset at the factory. Adjustment is only needed if you have a different preference.

Use a large blade screw driver so you do not strip the adjustment screw. Raise the shade to the upper stop limit. Remove the cassette from the brackets (see Removing the shade section). Remove the left side cassette end cap to expose the lift tension screw. To increase the tension, lower the shade about 6" then rotate the adjustment screw clockwise. To decrease the tension rotate the adjustment screw counter-clockwise. There must be enough tension or the shade will not reach the upper stop limit. Raise the shade to the full up position and reinstall the cassette end cap and install the cassette back into the mounting brackets.



STEP 7 Installing optional hold down brackets

Lower the shade down to the desired location for the hold down brackets. Pierce the pre molded hole in the end caps with a 1/16" drill bit. Place the hold down bracket pin in the hole and align the brackets onto the mounting surface. Mark the screw holes with a pencil. Using a 1/16" drill bit, drill pilot holes for the screws. Secure the hold down brackets with the mounting screws.



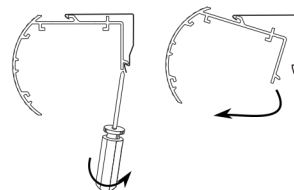
Removing the shade

For wide or heavy shades, use two people positioned at each end of the shade when lifting from the brackets. When releasing brackets, start at one end of the cassette and work your way to the other.

1. Raise the shade to the full rolled up position.

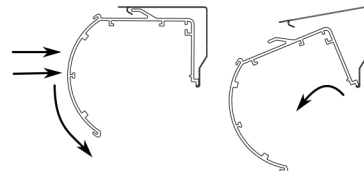
Medium Cassette

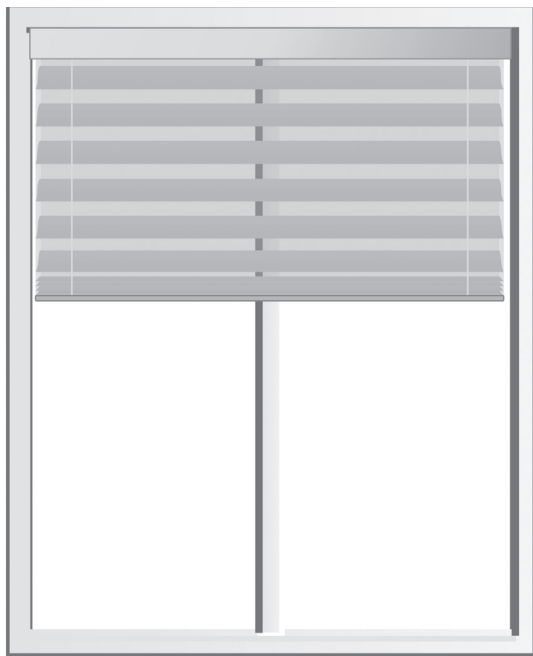
2. At the bottom rear of the cassette, insert a flathead screwdriver in between the cassette and bracket release tab. Gently twist the screwdriver and pry open the bracket to release the cassette. As you release all brackets, support the cassette to keep it from falling. Rotate the cassette free from the top lip of the brackets. The large cassette method may also be used.



Large Cassette

2. Push firmly on the front of the cassette to spring the brackets back. As the cassette lip dis-engages from the bracket rotate the cassette front downward. As you release all brackets, support the cassette to keep it from falling. Lift the cassette free from the bottom/back lip of the brackets.





Instruction Booklet

WireFree™ Solar Pack

#9015575

Solar Pack Installation

The WireFree™ Solar Pack harnesses renewable solar energy to power WireFree™ motorized window coverings. This innovative product from Somfy is easy to install, and provides a maintenance free, longer life alternative as compared to standard lithium battery options.

This product is designed to meet the energy requirements for new and existing Somfy 12 Volt WireFree™ motorized window coverings, and should not be used in conjunction with any other motor systems.

Parts Overview

- ① **Photovoltaic (Solar) Panel** (with window mounting adhesive tape and surface prep-pads)



- ② **"Y"-Harness Connector**



- ③ **Rechargeable Ni-MH Battery + Battery Tube**



Optional Accessories:

Battery Tube Mounting Clip Pack

- A. Mounting Clips
- B. Securing Bands
- C. Screws

Item #9013263



Solar Panel Mounting Bracket Kit

(for off-the-glass mounting)

- A. 2" Brackets
- B. 4" Brackets
- C. Mounting Screws

Item #9015897



24 & 48 Inch Extension Cable
(for extending battery or solar panel connection)

24 Inch – Item # 9016374
48 Inch – Item # 9016374



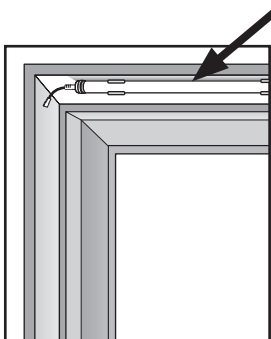
Step 1: Installing Battery Tube

If your motorized window covering does not have provisions to mount the battery tube, you will need to purchase the optional wall mount battery clips as pictured on previous page.

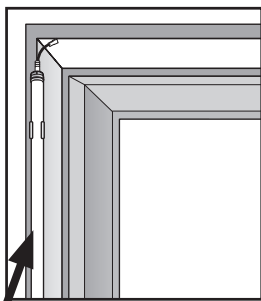
- **New Installations:** The location of battery tube must be determined prior to installation of window covering.
- **Existing Installations:** Simply replace the existing (Lithium) battery tube with the new Solar Pack battery tube.
(NOTE: Lithium battery tubes are not compatible with Solar Pack)

NOTE: Battery should be fully charged prior to installation with battery charger (Somfy Item #9015781) sold separately.

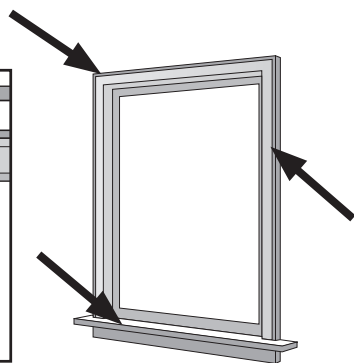
The following depicts the most common installation options, however the battery tube may be installed in a location that is most convenient.



Option 1: Horizontal Mount Inside or Outside of Window Frame



Option 2: Vertical Mount Inside or Outside of Window Frame



Option 3: Any other location that works for your specific installation

NOTE: If the battery tube is located more than 10 inches from the motor (*motor side of window covering*) an extension cable may be used.

INSIDE WINDOW FRAME MOUNTING ONLY:

A. Find the "Window Depth."

Measure the depth of the window return (**front to back**) and note.

B. Find the "Overall Depth."

Measure the depth of the window covering (**front to back**) including window covering mounting brackets. Add 1 inch and note.



Is the "Window Depth" **SMALLER** than the "Overall Depth?"

YES → Inside Window Frame mounting is **not possible**.

NO → Inside Window Frame mounting is acceptable, **GO TO STEP 2.**

Step 2: Installing Solar Panel

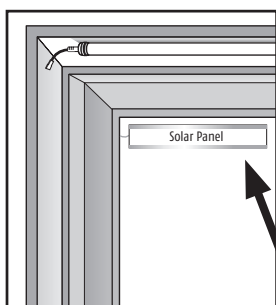
DETERMINE THE LOCATION OF THE SOLAR PANEL

- The Solar Panel must always be installed **INDOORS**, in most cases, directly against the window glass to ensure maximum exposure to sunlight

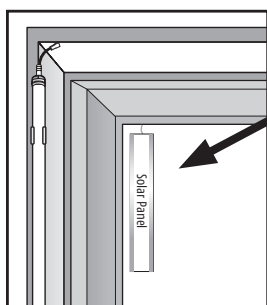
NOTE: To prevent damage to Solar Panel and/or window hardware, **DO NOT MOUNT** Solar Panel directly to window glass if it will cause an obstruction to moveable window frames and hardware!

- Optional: Solar Panel should be mounted **on the same side** as the battery tube (see **Option 1 and 2**). Extension cables may be purchased to accommodate other locations.

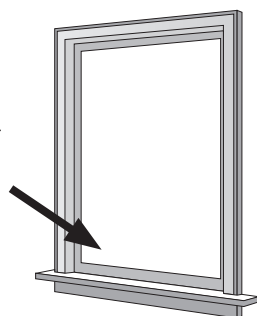
The following depicts the most common installation options, however if Solar Panel CANNOT be mounted directly to window glass, the Optional Solar Panel Bracket Kit (previous page) may have to be purchased. The bracket kit will enable the Solar Panel to be mounted directly to the inside "window-return" or directly to the window covering enclosure/headrail (if one is used). See **Option 4** (below).



Option 1: Horizontal Mount Inside or Outside of Window Frame



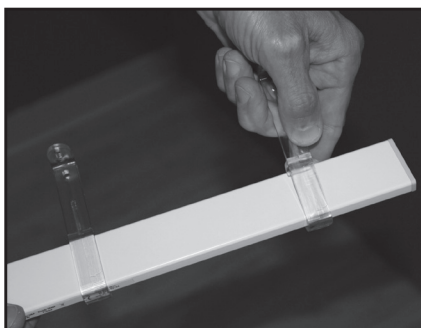
Option 2: Vertical Mount Inside or Outside Frame



Option 3: Any other location that works for your specific installation

NOTE: If the Solar Panel is located more than 10 inches from the motor (motor side of the window covering) an optional extension cable (previous page) may be used.

Option 4



Step 3: Installing Solar Panel to Window Glass

1. Clean Solar Panel frame and proposed window glass location with alcohol prep pad (included). Let dry for 2 minutes.
2. Position Solar Panel "face-up" and apply the adhesive tape to (4) corners of the Solar Panel frame (See Figure 2). Then adhere to window surface.

NOTE: Adhesive tape is precut for your convenience. Direct contact with skin may contaminate tape. It is important that your skin does not come in contact with adhesive. Always peel away the *master liner* (first) while handling/positioning tape with *upper liner*. This will allow you to easily position tape onto frame of Solar Panel. (See Figures 1 and 2)

Figure 1.

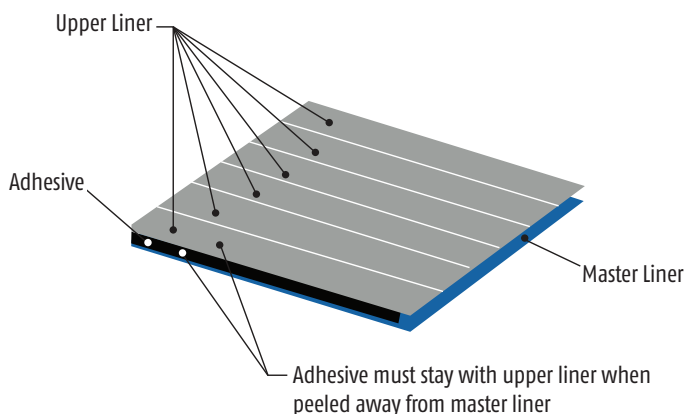
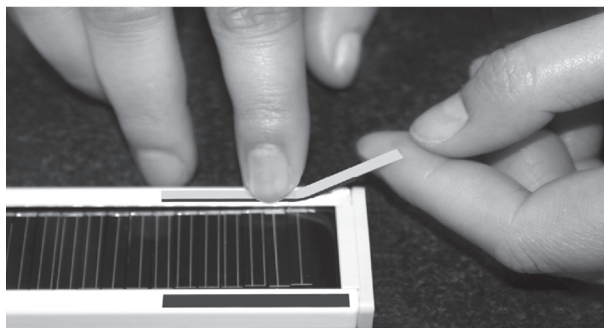
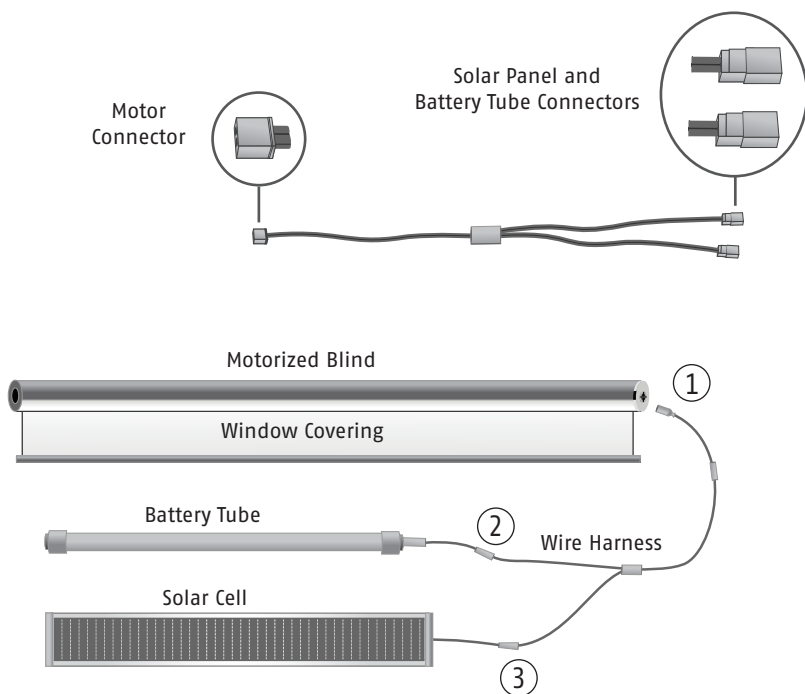


Figure 2.



Step 4: Connecting Solar Panel and Battery Tube

1. Connect Wire Harness Motor Connector to motorized window covering.
2. Connect Battery Tube to Wire Harness.
3. Connect Solar Panel to Wire Harness.



Step 5: Commissioning Motorized Window Covering

ACTIVATION OF MOTORIZED WINDOW COVERING:

- **New Installations:** Please reference Window Covering Product Guide (Usually included with Motorized Window Covering) for instructions on initial activation and/or programming of product.
- **Existing Installations:** Simply operate the window covering as normal. Once initial command (UP and DOWN) is sent, window covering will respond with a brief “jog,” (UP and DOWN movement). All controls will now operate as previously. There is no need to reprogram the motorized window covering.



For existing installations, simply activate the UP or DOWN button to operate the motorized window covering!

Somfy Systems, Inc.
North America Headquarters

121 Herrod Blvd
Dayton, NJ 08810
(P) 800 22 SOMFY
(P) 609 395 1300
(F) 609 395 1776

Florida

6100 Broken Sound Pkwy
Northwest Suite 14
Boca Raton, FL 33487
(P) 877 227 6639
(P) 561 995 8376
(F) 561 995 7502

California

15291 Barranca Pkwy
Irvine, CA 92618
(P) 877 727 6639
(F) 949 727 3775

Somfy Canada

5178 Everest Drive
Mississauga, Ontario L4W2R4
CN 905-564-6446
(F) 905-238-1491

Roll Up WireFree™ RTS Programming & Operation Instructions

LT-30RT Round Head

Before you begin

Motors are shipped without limit switch settings and transmitter ID's. Steps (1-6) must be completed to ensure proper shade programming and functionality. It may be necessary to disconnect shades from their respective power while programming is in progress. While programming (step 4), shade should not be inactive for longer than 2 minutes or motor will exit programming mode.



Programming Instructions are for use with Telis 1&4, Decora 1&4 or Chronis Timer

The following illustrations and instructions represent the Telis hand-held remote, and may also be applied to the Decora wireless wall switch and Chronis Timer.



Telis 1 Transmitter



Decora 1

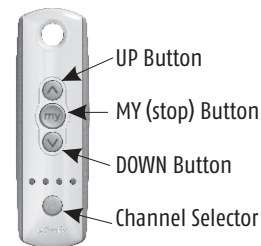


Chronis Timer

STEP ONE

Connect Power to Motor

- 1) Connect 12V battery wand or transformer to the motor. Motor should already be installed in shade.



Telis 4 Transmitter

STEP TWO

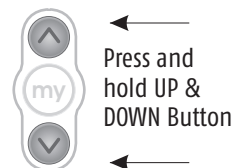
Initiate Programming – (for use with Telis 1 & 4, Decora 1 & 4 or Chronis Timer)

For Single Channel Transmitters (Telis 1, Decora 1, or Chronis Timer)

- 1) On the transmitter, press and hold the **UP** and **DOWN** buttons simultaneously until the shade jogs (shade has a short up and down movement).

For Multi-Channel Transmitters (Telis 4 or Decora 4)

- 1) Using the channel selector, select the desired channel.
- 2) On the transmitter, press and hold the **UP** and **DOWN** buttons simultaneously until the shade jogs.



NOTE: This step cannot be performed if the transmitter has already been programmed (memorized) to shade.

Roll Up WireFree™ RTS Programming & Operation Instructions

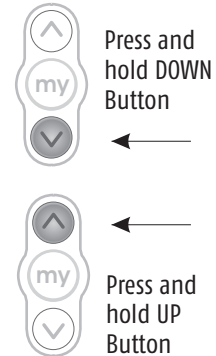
LT-30RT Round Head

STEP THREE

Check Polarity (Shade direction) MUST BE DETERMINED BEFORE SETTING SHADE LIMITS

Press and hold the **DOWN button** and confirm the shade moves down.
Press and hold the **UP button** and confirm the shade moves up.

- If shade direction is correct, continue to Step 4.
- If shade direction is not correct (in reverse), press and hold the **MY (stop) button** on the transmitter for 2 seconds until the shade jogs. Shade direction is now corrected. Shade movement should now correspond to the direction button on the transmitter.

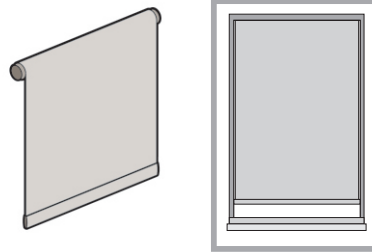


STEP FOUR

Setting Limits (Shade Positions)

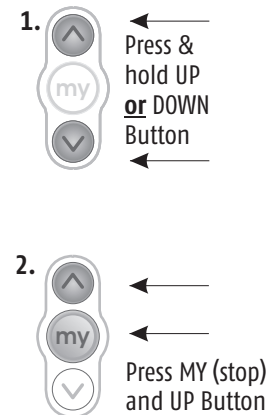
Starting with shade in down position.

- 1) Press and hold the **UP or DOWN button** on the transmitter to reach the desired lower limit (shade position).

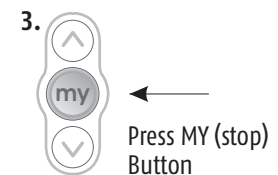


NOTE: During limit setting, shade operates in approximately 3ft. increments only. If shade stops prior to reaching desired limit (final shade position) release then press and hold the down button until the shade begins to move.

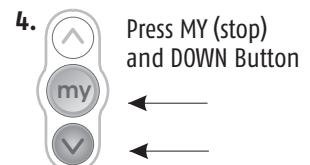
- 2) Once the desired lower limit (shade position) is reached, press and hold the **MY (stop) and UP buttons** simultaneously until the shade begins to move up, then release.



- 3) Press the **MY (stop) Button** when the shade reaches the desired upper limit (shade position). If necessary, adjust the desired shade position with a brief press of either the **UP or DOWN button**.



- 4) Once desired upper limit (shade position) is reached, press and hold the **MY (stop) and DOWN buttons** simultaneously until the shade begins to move down, then release.



Roll Up WireFree™ RTS Programming & Operation Instructions

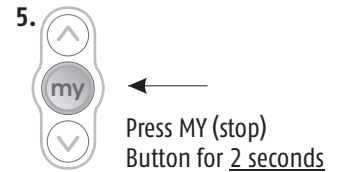
LT-30RT Round Head

STEP FOUR

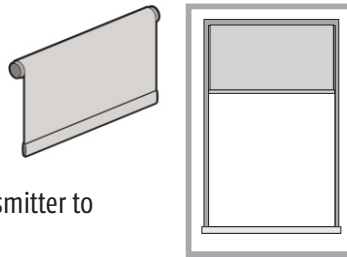
Setting Limits (Shade Positions) continued.

- 5) Once shade stops at previously set lower limit (shade position), press the **MY (stop) button** for 2 seconds until the shade jogs. This confirms both limits (shade positions).

To complete programming, proceed to **STEP FIVE**

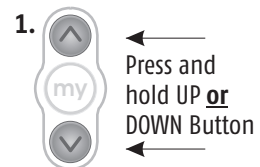


Starting with shade in up position

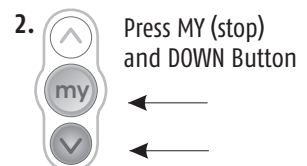


- 1) Press and hold the **DOWN or UP button** on the transmitter to reach the desired upper limit (shade position).

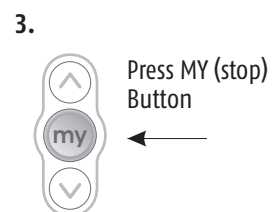
NOTE: During limit setting, shade operates in 3ft. increments only. If shade stops prior to reaching desired limit (final shade position) release then press and hold the down button until the shade begins to move.



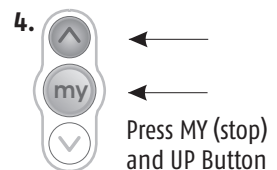
- 2) Once the desired upper limit (shade position) is reached, press and hold the **MY (stop)** and **DOWN buttons** simultaneously until the shade begins to move down, then release.



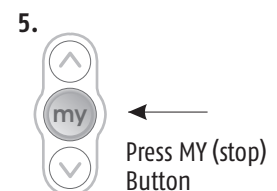
- 3) Press the **MY (stop) button** when the shade reaches the desired lower limit (shade position). If necessary, adjust the desired shade position with a brief press of either the **UP or DOWN button**.



- 4) Once desired lower limit (shade position) is reached, press and hold **MY (stop)** and **UP buttons** simultaneously until the shade begins to move up, then release.



- 5) Once shade stops at previously set upper limit (shade position), press and hold the **MY (stop) button** for 2 seconds until the shade jogs. This confirms both limits (shade positions).



To complete programming proceed to **STEP FIVE**

Roll Up WireFree™ RTS Programming & Operation Instructions

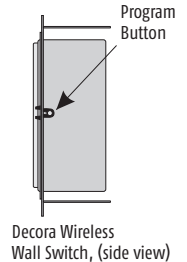
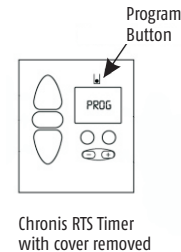
LT-30RT Round Head

STEP FIVE

Completing & Exiting Programming Mode

Using a paperclip, press and hold the **PROGRAM button** on the back of the transmitter until the shade jogs.
TRANSMITTER IS NOW MEMORIZED AND PROGRAMMING IS COMPLETE.

Note: If power is disconnected from shade before Step 5 is completed, TRANSMITTER WILL NOT BE MEMORIZED to the programmed shade however limits (shade positions) will remain programmed. If this occurs, go back and repeat step 2 (Initiate Programming). Then omit step 4 (Setting Limits) and resume with step 5.



STEP SIX

Adding Additional Transmitters, Assigning or Deleting Channels

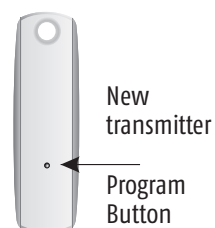
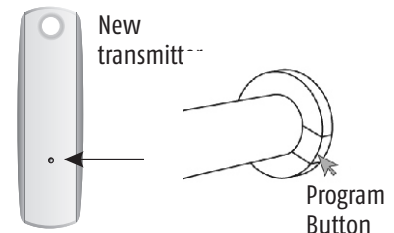
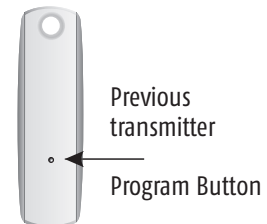
Adding Additional Transmitters (Single Channel)

With a Remote Control

- 1) Using a paperclip, press and hold the **PROGRAM button** on the previously addressed transmitter until the shade jogs.
- 2) Using a paperclip, press and hold the **PROGRAM button** on the Additional (new) transmitter until the shade jogs. Additional (new) transmitter is now added to shade memory and can be used to operate shade.

With the Program Button on the Motor

- 1) Using a paperclip, press and hold the **PROGRAM button** on the motor head, LED will blink once then remain on, release button and motor will jog.
If you cannot see LED light (because of certain mounting constraints) press and hold **Programming button** for 2 seconds then release, shade will then jog.
- 2) Using a paperclip, press and hold the **PROGRAM button** on the Additional (new) transmitter until the shade jogs. The Additional (new) transmitter is now added to shade memory and can be used to operate shade.



Assigning Specific Channels to Shade (Multi-channel transmitters only)

- 1) Using a paperclip, press and hold the **PROGRAM button** on the previously addressed transmitter until the shade jogs.
- 2) Select the desired channel (1-4 or all) by momentarily pressing the **Channel Selector button** on the multi-channel transmitter.
- 3) Press and hold the **PROGRAM button** on the multi-channel transmitter until the shade jogs. Additional (new) channel is now added to shade memory and can be used to operate shade.

Note: To prevent unwanted Channel/Transmitter assignments, it may be necessary to unplug power from all previously programmed shades until programming is complete.

Roll Up WireFree™ RTS Programming & Operation Instructions

LT-30RT Round Head

STEP SIX

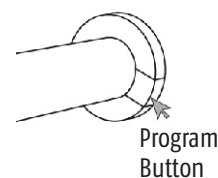
Adding Additional Transmitters, Assigning or Deleting Channels (continued).

Deleting Specific Channels/Transmitters

- 1) Using a paperclip, press and hold the **PROGRAM button** on the previously addressed transmitter until the shade jogs.
- 2) Select the desired channel (1-4 or all) or transmitter (single channel) to be deleted.
- 3) Press and hold the **PROGRAM button** on the transmitter until the shade jogs. Channel or transmitter is now deleted from shade memory and will not operate shade.

To delete ALL transmitter channels: Using a paperclip, press and hold the **PROGRAM Button** located on the motor head until LED light begins to flash on and off, release button and motor will jog.

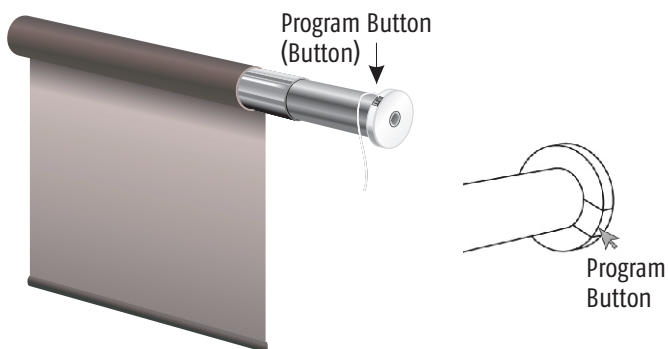
If you cannot see LED light (because of certain mounting constraints) press and hold **Programming button** for 7 seconds then release, shade will then jog.



STEP SEVEN

Resetting Motor (Erasing all Previously Programmed Limit Settings and Channels)

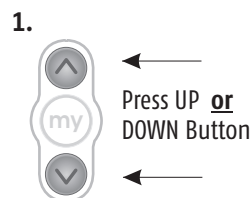
To delete all previous settings: Using a paperclip, press and hold the **PROGRAM button**, located on the motor head for 12 seconds. All transmitters and limits will be erased. (Motor is now reset to factory mode.) Motor limits will need to be reestablished.



OPTION ONE

Setting an Intermediate Position (IP)

- 1) Press the **UP or DOWN directional button** on the previously addressed transmitter until the shade reaches a desired intermediate position, then press the **MY (stop) button** to stop. If necessary adjust the desired position with a brief press of either the **UP or DOWN button**.



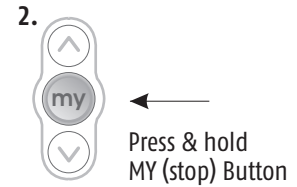
Roll Up WireFree™ RTS Programming & Operation Instructions

LT-30RT Round Head

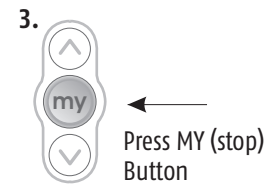
OPTION ONE

Setting an Intermediate Position (IP) continued.

- 2) Once the desired Intermediate position is reached, Press and hold the **MY (stop) button** on the transmitter until the shade jogs. Intermediate position is now added to memory



- 3) Activate the shade intermediate position by pressing the **MY (stop) button** from ANY shade position.



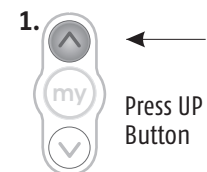
Note: Shade should be stationary prior to activating intermediate position function. If shade is actively moving (in-motion) MY (stop) button should be pressed twice.

To Delete: Activate shade to (IP) position, then press and hold the MY (stop) button for 5 seconds. Shade will jog to confirm deletion.

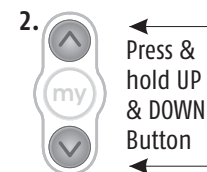
OPTION TWO

Re-adjusting Upper Limit (UP Shade Position)

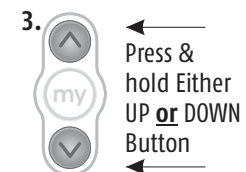
- 1) Press the **UP directional button** on the transmitter. Shade will travel to the pre-set UP limit.



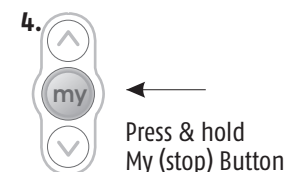
- 2) Once shade stops at pre-set up limit, press and hold the **UP and DOWN buttons** simultaneously on the transmitter until the shade jogs.



- 3) Press and hold either the **UP or DOWN button** on the transmitter to adjust shade to new position.



- 4) Press and hold the **MY (stop) button** until the shade jogs. New Upper Limit (Up stop Position) is now added to memory.



Roll Up WireFree™ RTS Programming & Operation Instructions LT-30RT Round Head

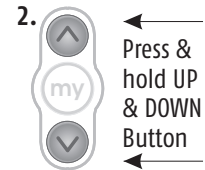
OPTION THREE

Re-adjusting Lower Limit (DOWN Shade Position)

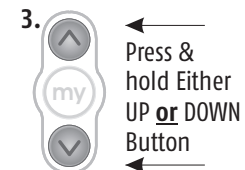
1) Press the **DOWN directional button** on the transmitter. Shade will travel to the pre-set **DOWN** limit.



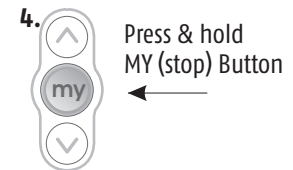
2) Once shade stops at pre-set down limit, press and hold the **UP and DOWN buttons** simultaneously on the transmitter until the shade jogs.



3) Press and hold either the **UP or DOWN button** on the transmitter to adjust shade to new position.



4) Press and hold **MY (stop) button** until shade jogs. New lower limit (Down stop position) is now added to memory.



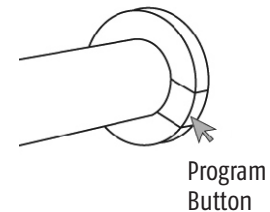
OPTION FOUR

Manual Activation of Shade

1) Using a paperclip. Press the **Programming button** on motor head momentarily. Shade will begin to operate.

2) Press the **Programming button** again to STOP.

3) Press the **Programming button** again to activate in opposite direction.



NOTE: Shade should already be programmed in order to activate manually.

OPTION FIVE

Activating Step (Tilting) Feature for Sheer Shade Applications

1) Press the **Down directional button** on the transmitter. Shade will travel to pre-set DOWN limit.

2) Press and hold the **DOWN button** on the transmitter until shade begins to "step" or tilt.

3) Release the **DOWN button** on the transmitter once new position is reached.

NOTE: Shade must be already programmed to activate tilting feature.