



LEVOLOR InMotion:

Amazon Alexa Quick Start Guide

Getting Started

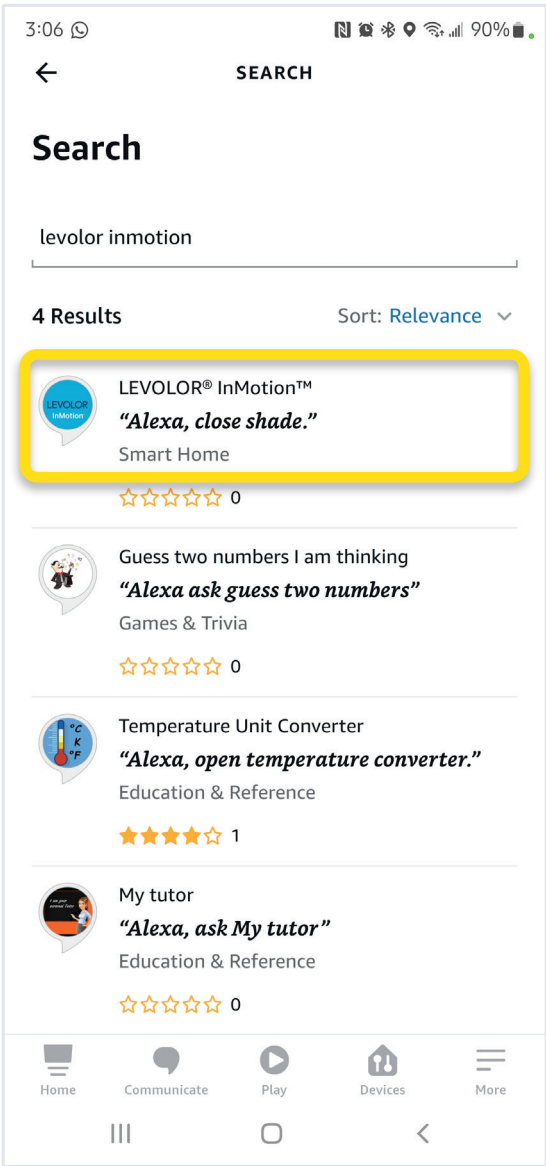
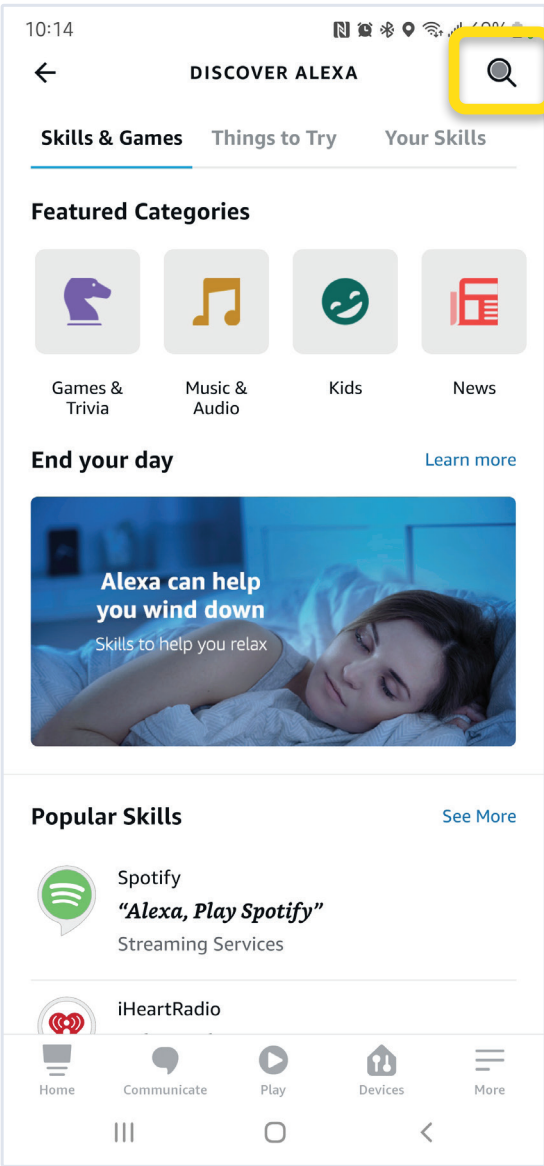
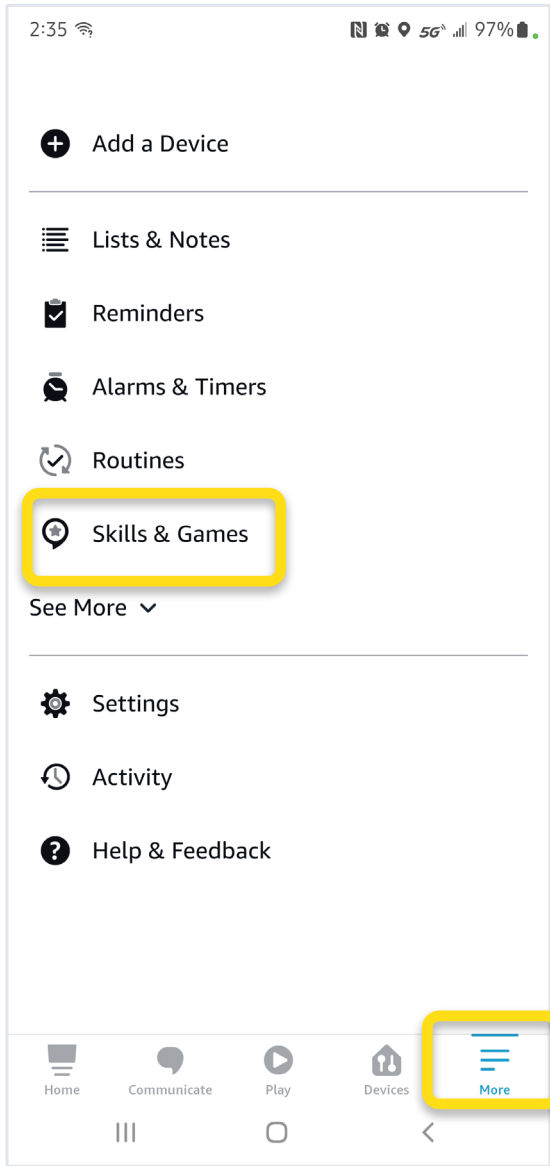
In order to take advantage of Alexa voice commands with LEVOLOR InMotion, you need:

- LEVOLOR InMotion account and hub
- Alexa app downloaded on your mobile device

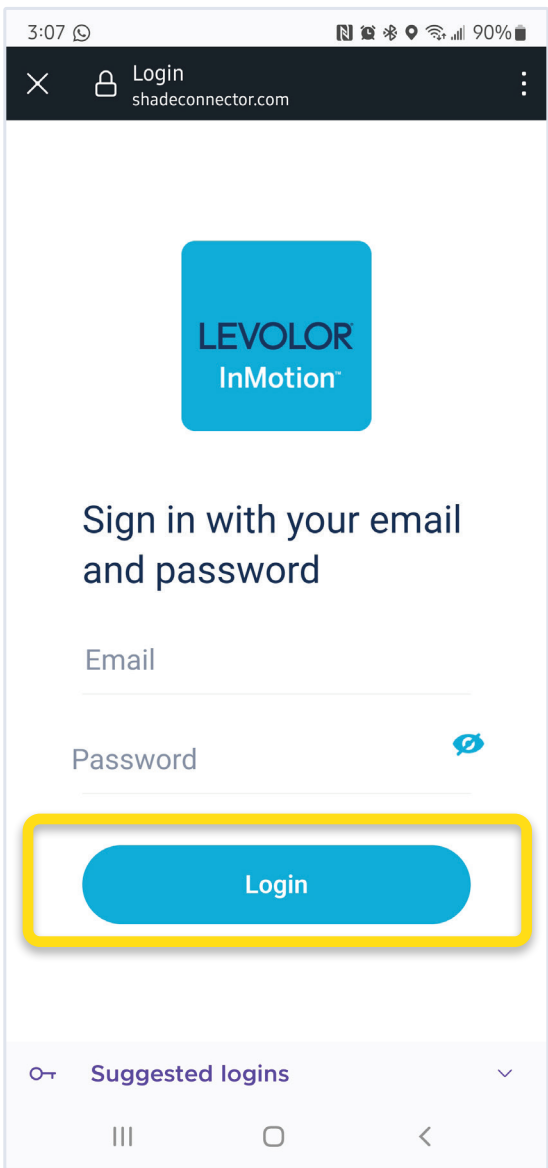
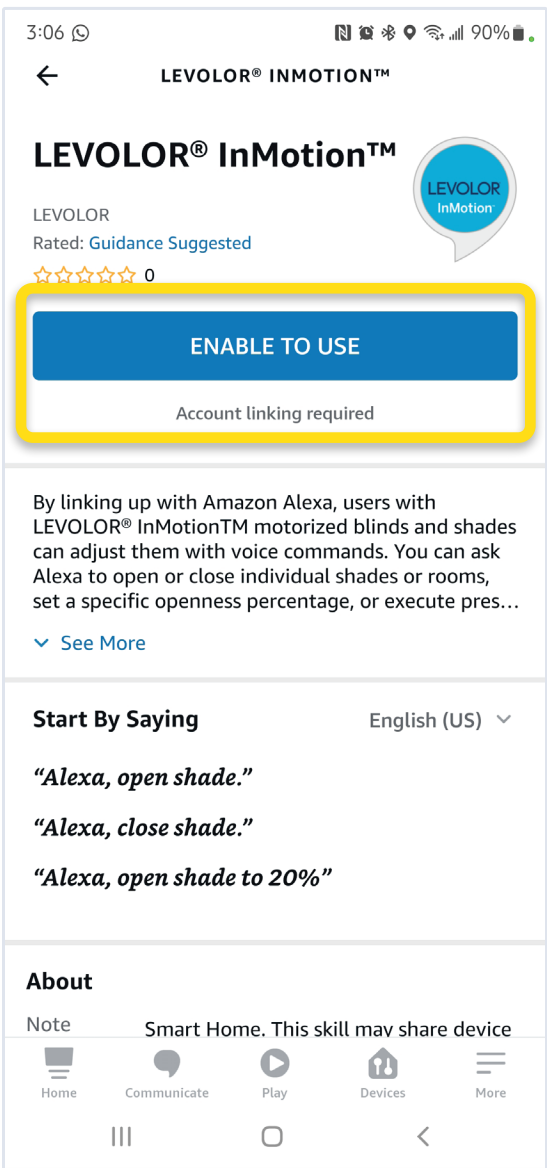
Enable Alexa Skill

1 Open the Alexa app on your mobile device. Select “More” in the bottom right corner then “Skills & Games”.

2 Select the magnifying glass in the top right corner then search “LEVOLOR InMotion”.



3 Select the LEVOLOR InMotion Skill and tap “Enable to Use”. Sign into your LEVOLOR InMotion account to link with Alexa.

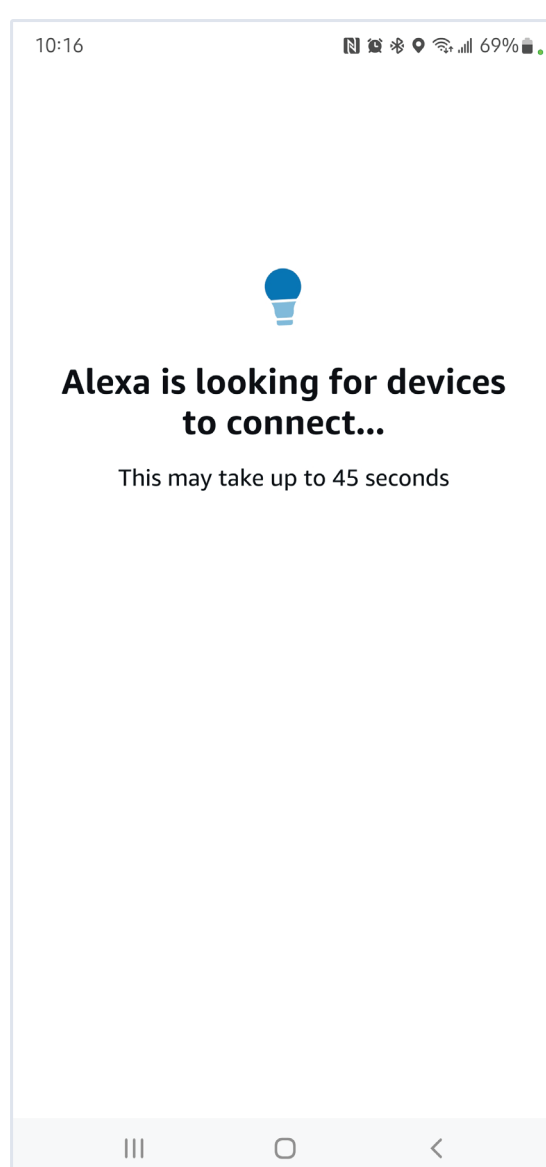


LEVOLOR InMotion:

Amazon Alexa Quick Start Guide

4

After confirmation, select “Discover Devices”.



5

Begin activating your InMotion shades using Amazon Alexa voice commands. See a chart of basic commands on the next page.

Additional Tips:

- Before attempting to discover your shades in the Alexa app, please ensure your hub is registered to your InMotion account.
- After your shades have been discovered in the Alexa app, use the “Add Group” feature in the Devices tab to combine them with other smart devices in your home for integrated voice-activated control.
- If you did not discover all of your shades after linking to your account, or you need to discover new devices in the future, you can add them later by selecting “Add Device” in the main menu.

LEVOLOR InMotion:

Amazon Alexa Quick Start Guide

Voice Commands

Activate your LEVOLOR InMotion blinds and shades using Amazon Alexa voice commands. Use the shade names assigned in the LEVOLOR InMotion app when using voice commands.

Command	Creating the Function
“Alexa, open/close (shade name)”	To control an individual shade, start with “open” and “close” then the shade name. Do not add the “blind”, “blinds”, “shade” or “shades” at the end.
“Alexa, open/close/set (shade name) to 35% position”	To move an individual shade to a specific % position, start with “open”, “close”, or “set” then the shade name and the phrase “to % position”.
“Alexa, raise/lower (shade name)”	To move an individual shade to a 5% difference of current position, start with “raise” or “lower” then the shade name. e.g. The current shade’s position is 35%. After this voice command, the shade will go to 30% if you say “raise” or 40% if you say “lower”.
“Alexa, open/close (Alexa group name)”	<p>To group control shades: Please be aware that the rooms you have setup in the InMotion app will not automatically show up in your Alexa app. It is required to recreate and group the shades in your Alexa app.</p> <p>Once the group has been created in the Alexa app, start with “open” or “close” then the group name. Do not add the word “blind”, “blinds”, “shade” or “shades”. e.g. You recreate a group named “Office” in the Alexa app with multiple shades. Say “Alexa, open Office.” to operate.</p>
“Alexa, turn on (InMotion scene name)”	To activate an InMotion scene, start with “turn on” followed by the scene name.



LEVOLOR InMotion:

Google Home Quick Start Guide

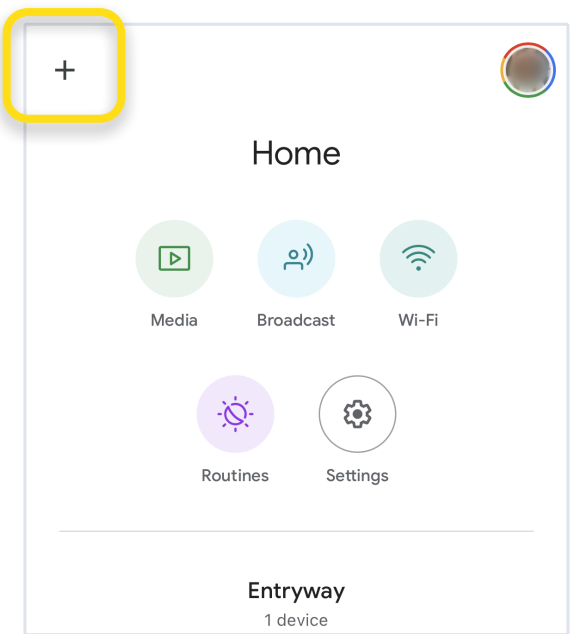
Getting Started

In order to take advantage of Google Assistant voice control of your InMotion system, you need:

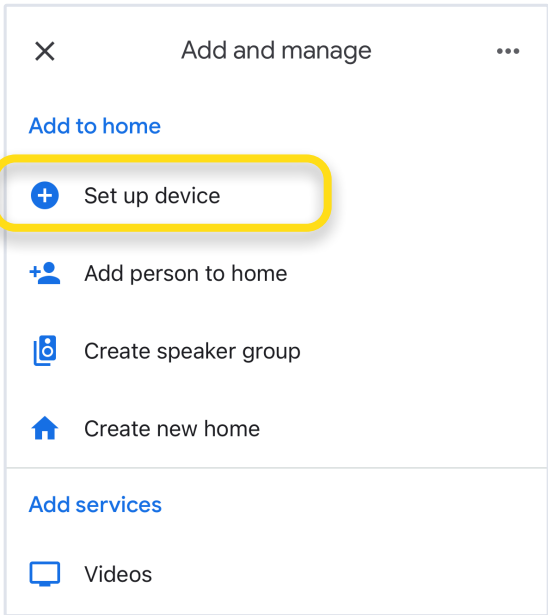
- LEVOLOR InMotion account and hub
- Google Home app installed on your mobile device

Link with Google

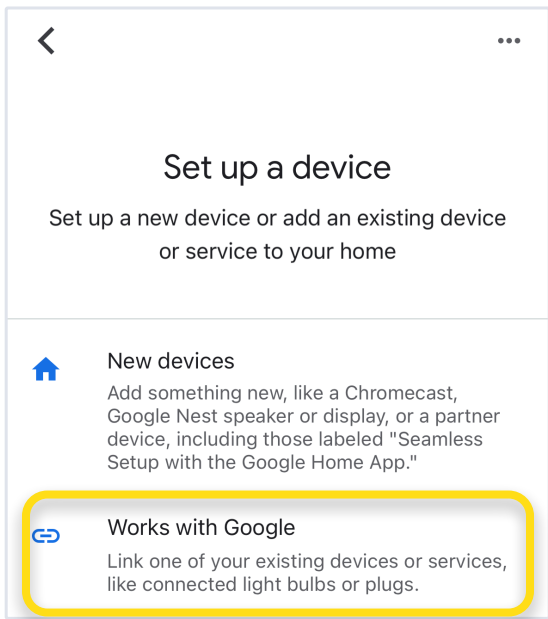
1 Open the Google Home app on your mobile device, and tap + icon.



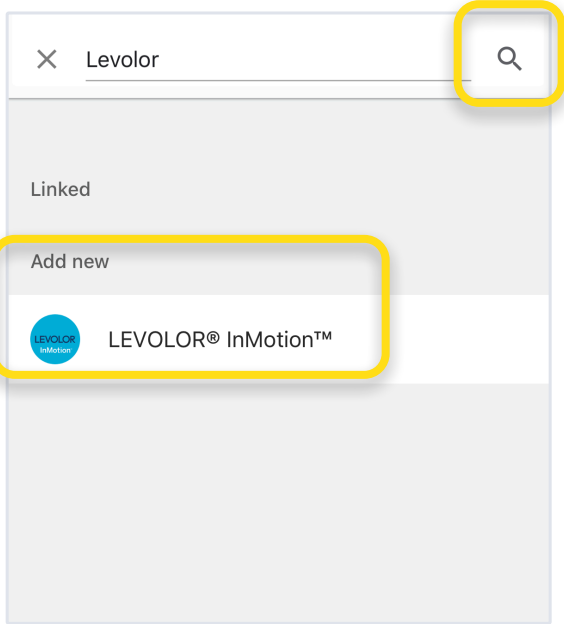
2 Choose the option: “Set up device”.



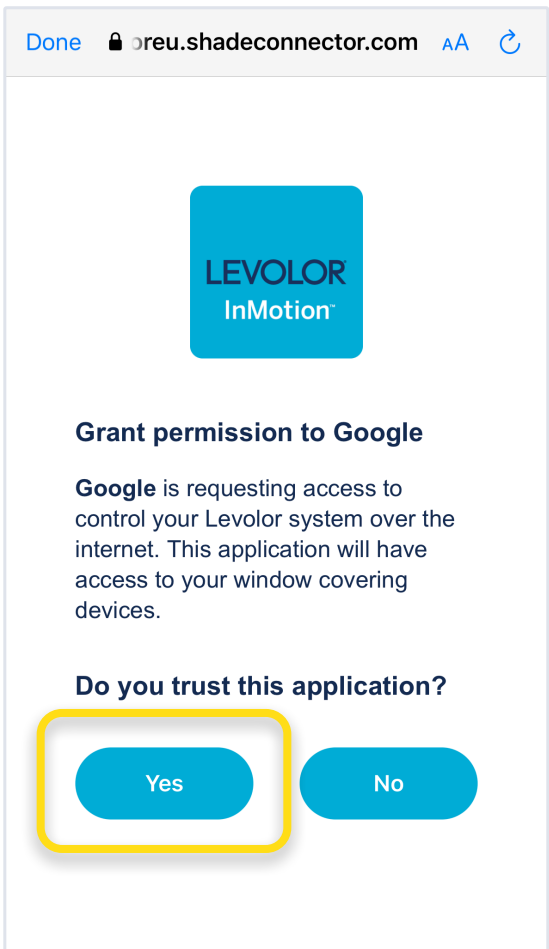
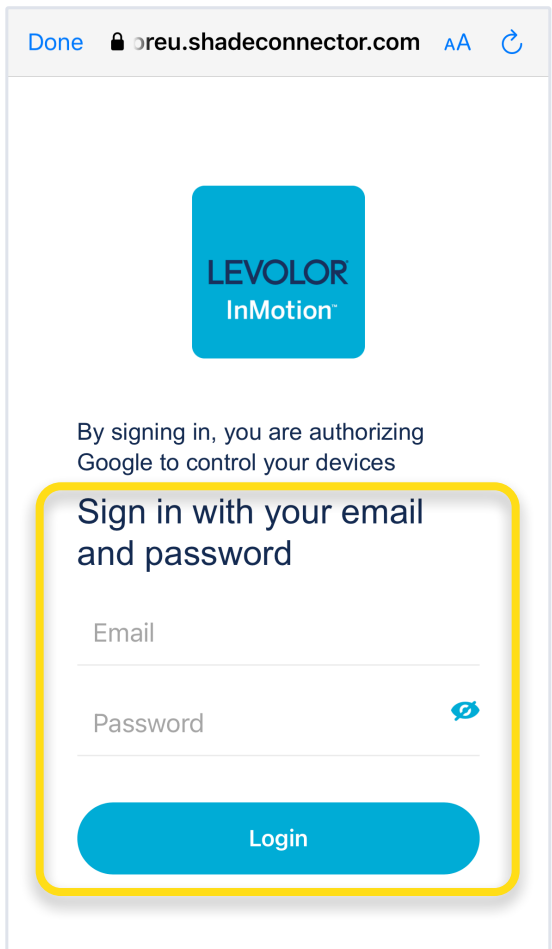
3 Choose the option: “Works with Google”



4 Search for InMotion. Tap to select.



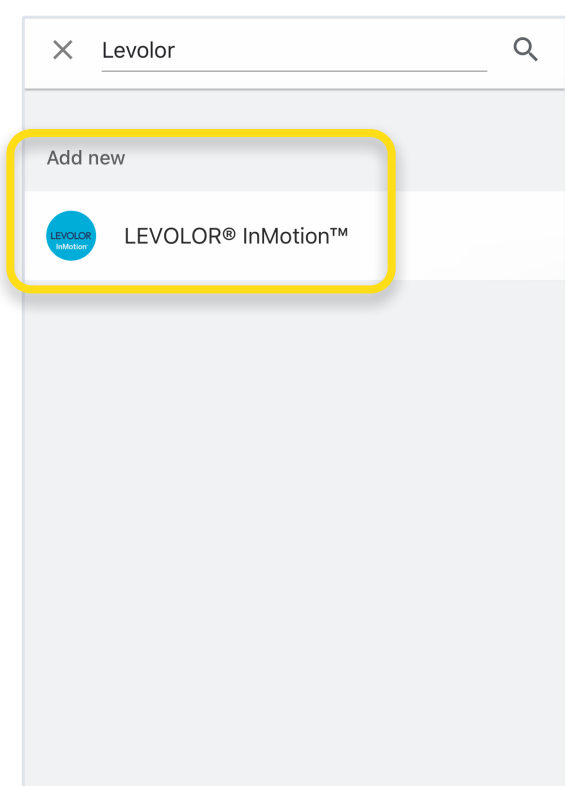
5 Enter your InMotion login information to link with Google Home.



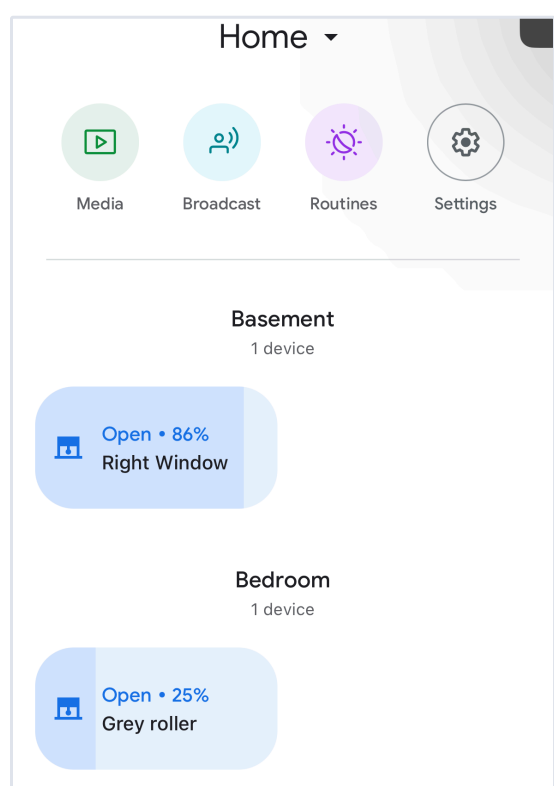
LEVOLOR InMotion:

Google Home Quick Start Guide

6 Now, your InMotion app is linked with Google Home.



7 Automatically, Google Home app will discover all shades programmed in your InMotion app. If necessary, change the name or rooms of shades.



Voice Commands

Activate your LEVOLOR InMotion blinds and shades using Google Home voice commands. Use the shade names assigned in the LEVOLOR InMotion app when using voice commands.

Command	Creating the Function
“Hey Google, open/close (shade name)”	To control an individual shade, start with “open” or “close” then the shade name. Do not add the word “blind”, “blinds”, “shade” or “shades” at the end.
“Hey Google, open/close (room name) blinds/shades”	To control all shades in the same Google room, start with “open” or “close” then add the room name and the word “blinds” or “shades”, plural form, at the end.
“Hey Google, set (shade name) position to favorite”	To move an individual shade to its favorite position, start with “set” then the shade name and the phrase “position to favorite”.
“Hey Google, set (room name) blinds/shades position to favorite”	To move all the shades in a specific room to their favorite positions, start with “set” then the room name and word “blinds” or “shades” with the phrase “position to favorite”.
“Hey Google, set (shade name) to 35% position”	To move an individual shade to a specific % position, start with “set” then the shade name and the phrase “to % position”.
“Hey Google, set (room name) shades to 35% position”	To move all shades to a specific % position, start with “set” then the word “blinds” or “shades” with the phrase “to % position”.
“Hey Google, run (scene name)”	To activate your InMotion Scenes, start with “run” and add your InMotion Scene name.



LEVOLOR InMotion:

Siri Quick Start Guide

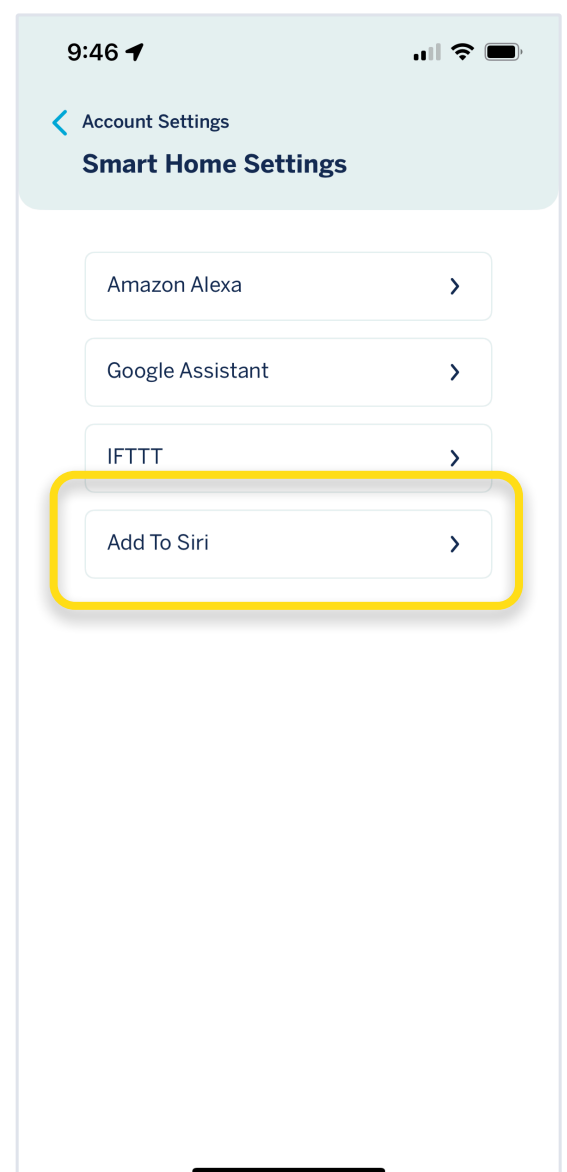
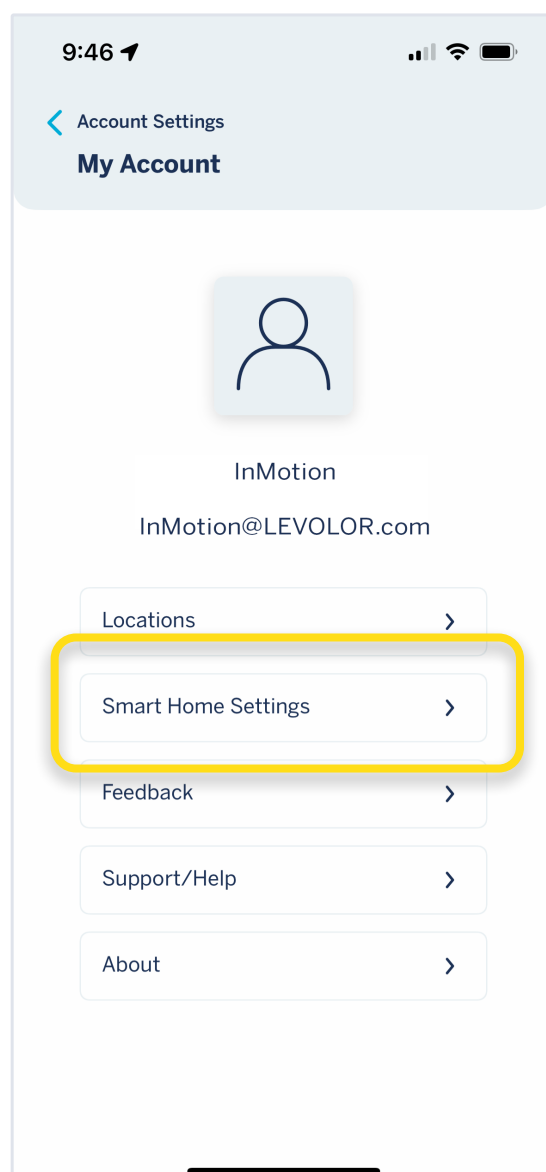
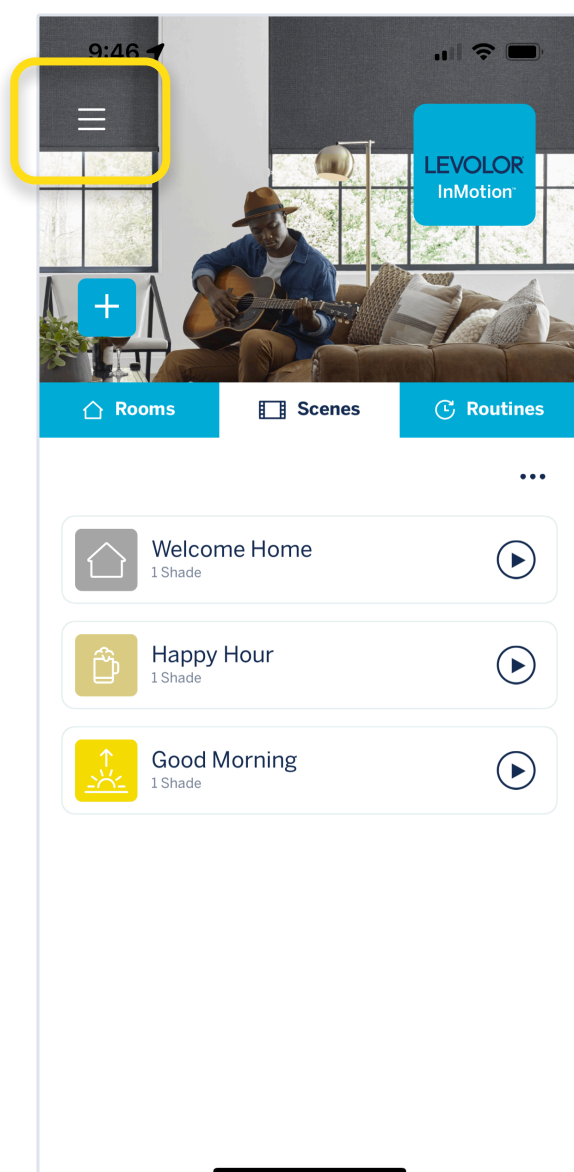
Getting Started

In order to add a shortcut to Siri to run InMotion with your voice, you need:

- LEVOLOR InMotion account and hub
- Apple iOS Device

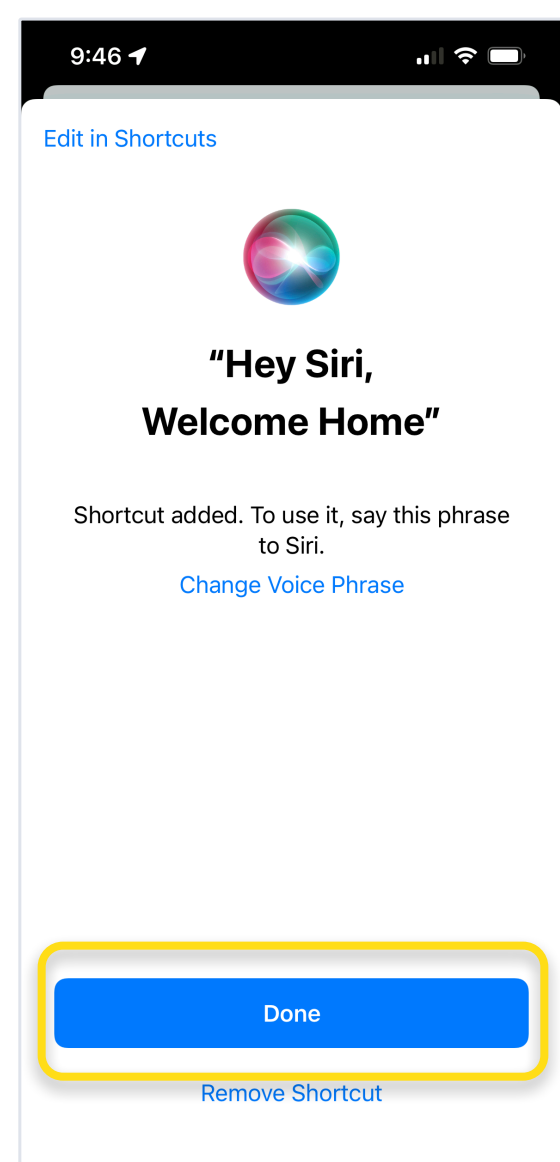
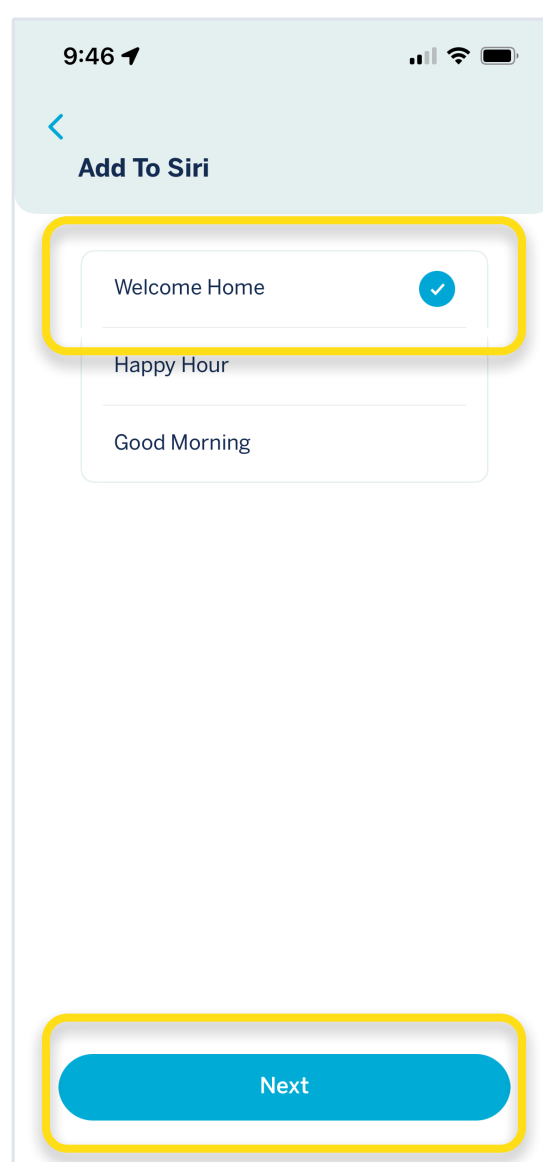
Add to Siri

- 1 In the InMotion app, tap the icon in the top left corner to open the main menu.
- 2 Select “Smart Home Settings” then “Add To Siri.”



- 3 Choose the Scene you would like to add to Siri, then tap “Next”. A shortcut added confirmation and instructions for use will appear.

Run a shortcut by asking Siri or tapping a suggestion on the lock screen.



InMotion™ Tips and Tricks

For more information visit LEVOLOR.com/InMotionSupport

REMOTE PROGRAMMING

SELECT A CHANNEL

Use channel 0 to control all channels together.

1. Press the - button on the remote to select a lower channel.
2. Press the + button on the remote to select a higher channel.

PAIR REMOTE TO BLIND OR SHADE

1. Use the - and + buttons to select the channel to pair.
2. Press and hold the programming button on the motor (about 2 seconds) until the motor jogs x 1 and/or beeps x 1.
3. In the next 10 seconds, press and hold the □ stop button on the remote until the motor jogs x 2 and/or beeps x 3.

NOTE: Repeat steps 1-3 to unpair remote.

HIDE UNUSED CHANNELS

1. Select a channel other than 0, then press and hold the - and + buttons simultaneously until remote control displays "C" then "15", then release buttons.
2. Press the - or + buttons until the number of visible channels needed is shown (between 1 and 15).
3. Press the □ stop button to confirm selection. The screen will display "o" once to confirm selection.

NOTE: Repeat steps 1-3 to unhide channels.

DISABLE LIMIT SETTING

After all programming is complete, lock the remote to prevent accidental or unintended changes to motor direction, travel limits, and operating mode.

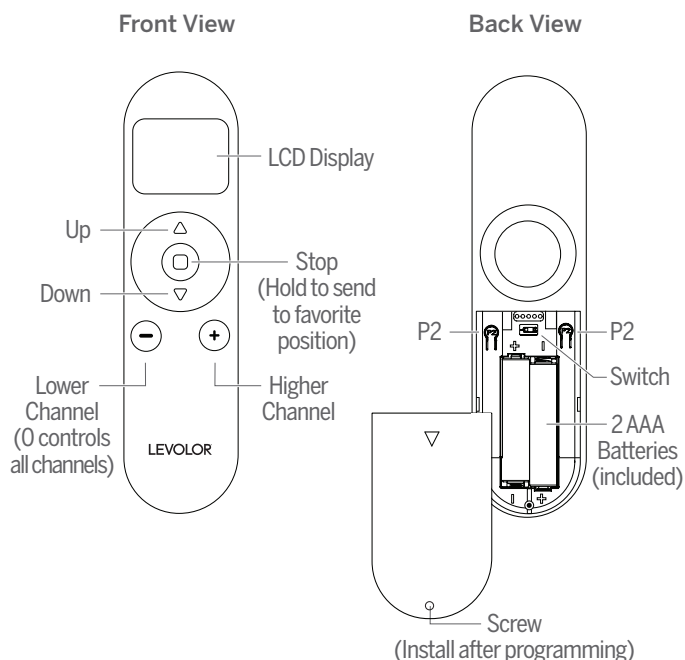
1. Remove cover from back of remote and locate the lock switch between the P2 buttons above batteries.
2. Move the switch to the left to lock. Remote will display "L" (lock).
3. Move the switch to the right to unlock and access all remote functions. Remote will display "U" (unlock).

ADD OR REMOVE ADDITIONAL REMOTE

Channels can be copied to an additional remote as an exact duplicate of the current remote programming.

1. On the current remote, select the channel to copy then press one P2 button in the battery compartment of the remote until motor jogs x 1 and/or beeps x 1.
2. Once more, on the current remote, press one P2 button in the battery compartment of the remote until motor jogs x 1 and/or beeps x 1.
3. On the new remote, select the channel to copy to then press one P2 button in the battery compartment of the remote until motor jogs x 2 and/or beeps x 3.

NOTE: Repeat steps 1-3 to remove additional remote control.



FAVORITE POSITION

To send to favorite position, press and hold the □ stop button.

To create a new favorite position, you must first delete the existing favorite position. This procedure will set the favorite position on all blinds and shades assigned to a channel.

DELETE FAVORITE POSITION

1. Use the - and + buttons to select the channel to delete the favorite from.
2. Press one P2 button in the battery compartment of the remote until motor jogs x 1 and/or beeps x 2.
3. Press and hold the □ stop button on the remote until the motor jogs x 1 and/or beeps x 1.
4. Press and hold the □ stop button on the remote again, until the motor jogs x 1 and/or beeps x 1.

SET FAVORITE POSITION

1. Use the △ up and ▽ down buttons to move blind or shade to the desired position.
2. Press one P2 button in the battery compartment of the remote until motor jogs x 1 and/or beeps x 2.
3. Press and hold the □ stop button on the remote until the motor jogs x 1 and/or beeps x 1.
4. Press and hold the □ stop button on the remote again, until the motor jogs x 2 and/or beeps x 3.

InMotion™ Tips and Tricks - Continued

For more information visit LEVOLOR.com/InMotionSupport

MOTOR OVERVIEW

During programming, all blinds and shades will jog by moving slightly down and up. Banded, roller, and sheer shades will both jog and provide an audible beep.

Certain programming functions will affect all blinds and shades on the selected channel such as – favorite position, travel limits, operating mode, and motor speed. To program individual blinds/shades: pair the blind/shade to its own channel or put all other blinds/shades into sleep mode.

To sleep Blinds: Disconnect battery

To sleep Shades: Press and hold programming button for 6 seconds until the motor jogs x 2. Wake shade by pressing the programming button for less than 1 second.

OPERATING MODE

This procedure will set the operating mode on all blinds and shades assigned to a specific channel.

All blind and shade motors can be set to two different operating modes.

CONTINUOUS MODE (DEFAULT SETTING)

Recommended for cellular, natural, roller, and roman shades.

Motor continues to move after a short press of the \triangle up or ∇ down arrow buttons until the \square stop button is pressed or until the limit is reached.

1. Press and hold (about 5 seconds) the \triangle up and ∇ down buttons simultaneously until the motor jogs x 1.
2. Press and hold (about 2 seconds) the \square stop button until the motor jogs x 2 and/or beeps x 3.

INTERMITTENT MODE

Recommended for banded shades, sheer shades, and wood blinds.

Motor moves a small amount after a short press of the \triangle up or ∇ down buttons and continues to move after a long press of the \triangle up or ∇ down buttons until the \square stop button is pressed or the limit is reached.

1. Press and hold (about 5 seconds) the \triangle up and ∇ down buttons simultaneously until the motor jogs x 1.
2. Press and hold (about 2 seconds) the \square stop button until the motor jogs x 1 and/or beeps x 1.

MOTOR SPEED

All motors have 3 speeds available and are set to the slowest speed by default. This procedure will set the motor speed on all blinds and shades assigned to a channel.

MOTOR SPEED (CONTINUED)

SET TO FASTER SPEED

1. Press one P2 button in the battery compartment of the remote until motor jogs x 1 and/or beeps x 1.
2. Press the \triangle up button until the motor jogs x 1 and/or beeps x 1.
3. Press the \triangle up button again until the motor jogs x 2 and/or beeps x 1.

SET TO SLOWER SPEED

1. Press one P2 button in the battery compartment of the remote until motor jogs x 1 and/or beeps x 1.
2. Press the ∇ down button until the motor jogs x 1 and/or beeps x 1.
3. Press the ∇ down button again until the motor jogs x 2 and/or beeps x 1.

NOTE: If the motor has no response, it is already on the fastest or slowest speed.

TRAVEL LIMITS

This procedure will adjust the travel limits on all blinds and shades assigned to a channel.

Upper and lower travel limits are set at the factory during production to your order specification. Upon installation, adjustment of these limits may be necessary to better suit your needs.

Take care adjusting limits to avoid damage to product. Lower limits cannot be adjusted on sheer shades.

NOTE: If you exit programming before you finish adjusting the travel limits, the motor will take the previous limits

ADJUST THE UPPER LIMIT

1. Use the - and + buttons to select the appropriate channel.
2. Press and hold the \triangle up and \square stop buttons simultaneously for about 5 seconds until the motor jogs x 1 and/or beeps x 1.
3. Use the \triangle up and ∇ down buttons to raise the blind or shade to the desired highest position.
4. Press and hold the \triangle up and \square stop buttons simultaneously for about 5 seconds until the motor jogs x 2 and/or beeps x 3.

ADJUST THE LOWER LIMIT

1. Use the - and + buttons to select the appropriate channel.
2. Press and hold the ∇ down and \square stop buttons simultaneously for about 5 seconds until the motor jogs x 1 and/or beeps x 1.
3. Use the \triangle up and ∇ down buttons to lower the blind or shade to the desired lowest position.
4. Press and hold the ∇ down and \square stop buttons simultaneously for about 5 seconds until the motor jogs x 2 and/or beeps x 3.