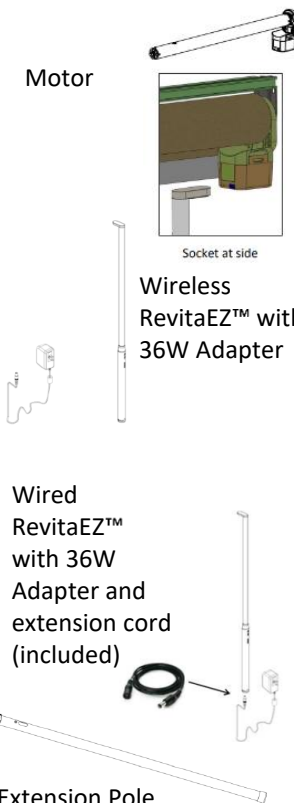
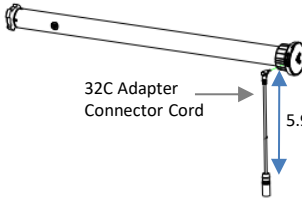
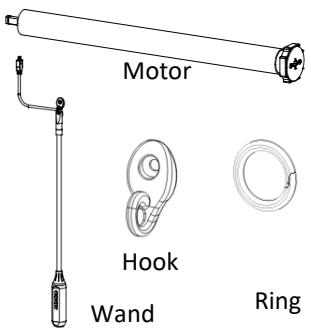




## Lift Systems—Motorization Battery Motor

Item	Specifications	Image
Battery Motor (MRS-32B)	<ul style="list-style-type: none"> <li>• Motor <ul style="list-style-type: none"> <li>• With electrically rechargeable lithium ion batteries included as an inherent part of the motor.</li> <li>• Charged by Power Charger.</li> <li>• Tube size: 1 3/4"</li> <li>• Motor Position: Right and Left</li> <li>• Socket position: Side only</li> <li>• Min/Max width: 24"/96", Min/Max length:12"/144"</li> <li>• Max qty of channels per motor can be set: 5</li> </ul> </li> <li>• RevitaEZ™ is optional but 1 charger is required (either type) per order. <ul style="list-style-type: none"> <li>• Wireless RevitaEZ™ with 36W Adapter <ul style="list-style-type: none"> <li>• Including a built-in rechargeable Li-ion battery.</li> <li>• Color: Black only</li> <li>• Power wand length: 35.43"</li> <li>• 1pc Power Charger + 1pc 36W AC adapter (Black only, used for charging RevitaEZ™)</li> <li>• Do not charge the shade while the power charger is plugged into outlet.</li> </ul> </li> <li>• Wired RevitaEZ™ <ul style="list-style-type: none"> <li>• Color: Black only</li> <li>• Power wand length: 35.43"</li> <li>• No battery inside</li> <li>• 1pc Power Charger + 1pc 36W AC adapter (Black only, used for RevitaEZ™) + 1pcs extension cable(cable length: 78.74")</li> </ul> </li> </ul> </li> <li>• 36W adapter extension cord (included) in black only</li> <li>• Extension Pole (optional)- Black only &amp; Length 35.83" <ul style="list-style-type: none"> <li>• Used to extend the Wired and Wireless RevitaEZ™.</li> </ul> </li> </ul>	 <p>Motor</p> <p>Socket at side</p> <p>Wireless RevitaEZ™ with 36W Adapter</p> <p>Wired RevitaEZ™ with 36W Adapter and extension cord (included)</p> <p>Extension Pole</p>
Battery Motor With Detachable Cord (MRS-32C)	<ul style="list-style-type: none"> <li>• Motor <ul style="list-style-type: none"> <li>▪ Electrically rechargeable lithium ion batteries included as inherent part of the motor.</li> <li>▪ Charged by 36W adapter (Black only) and 32C's adapter connector cord (5.9"). AC adapter wire length is 59".</li> <li>▪ 36W adapter extension (optional) in black only (78 3/4")</li> <li>▪ Tube size: 1 3/4"</li> <li>▪ Motor Position: Right and Left</li> <li>▪ Min/max width: 24"/96", Min/max length:12"/144"</li> <li>▪ Max qty of channels per motor can be set: 5</li> </ul> </li> </ul>	 <p>32C Adapter Connector Cord 5.9"</p>
QuikClick™ Wand Control	<ul style="list-style-type: none"> <li>• Motor <ul style="list-style-type: none"> <li>• With electrically rechargeable lithium ion batteries included as an inherent part of the motor.</li> <li>• Charged by Micro USB cable (included)</li> <li>• Tube size: 1 3/4"</li> <li>• Motor Position: Right (Default) or Left (Optional)</li> <li>• Min/Max width: 24"/96", Min/Max length:12"/144"</li> </ul> </li> <li>• Wand Color: White, Cottage White, and Black</li> <li>• Hook and Ring Color: White, Cottage White, and Black</li> <li>• Wand Lengths: 24", 48", 60", 72"</li> <li>• Micro USB Cable Color: White only (Length: 78.74"). One USB cable included per order by default.</li> </ul>	 <p>Motor</p> <p>Hook</p> <p>Wand</p> <p>Ring</p>

## Motorization—Motor & Remote Option

### Remote Spec

<b>Remote Control</b>	<ul style="list-style-type: none"> <li>RF technology operates shade up to 20meters in the open space and 10 meters in the indoor visual line.</li> <li>Total 5 groups available.</li> <li>Each group can be paired with one or multiple shades.</li> <li>Max recommended qty of groups per shade: 5</li> <li>Program at the factory before shipping</li> <li>Color: Black only</li> <li>Pre-installed with batteries (CR2032 x2pcs).</li> <li>Compatible with the above motors expect for QuikClick™ Wand Control Motor (AM25).</li> <li>Default “All” button controls all shades at same time.</li> <li>It is recommended to pair same lift type of shades in same group to ensure the best use experience.</li> </ul> <b>Remote Holder</b> <ul style="list-style-type: none"> <li>Color: Black only</li> <li>When ordering 1 remote control, defaulted with 1 remote holder supplied.</li> </ul>	
<b>ShadeAuto™ Hub</b>	<ul style="list-style-type: none"> <li>Available only in black</li> <li>Max Accounts per Hub: 10</li> <li>Included: 1pc adapter + 1 USB Cable</li> <li>Connect via Wi-Fi router or Ethernet</li> <li>Must be compatible with the ShadeAuto App</li> <li>It is recommended on Hub be installed on one floor/level.</li> </ul>	

**Note:** The order can be ordered with “no remote” for whole order and use the existing remote.

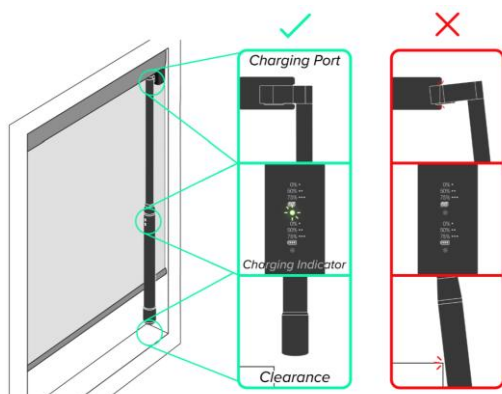
### Battery Motorization has a special height size requirement

Allow enough height clearance (x: 39 1/2” to 42 3/16”) in order to accommodate room for the RevitaEZ (power charger) when it is in use.

- If Extension Pole is ordered, please note a clearance from the bottom of the pole to the floor needs to be 33 11/16”

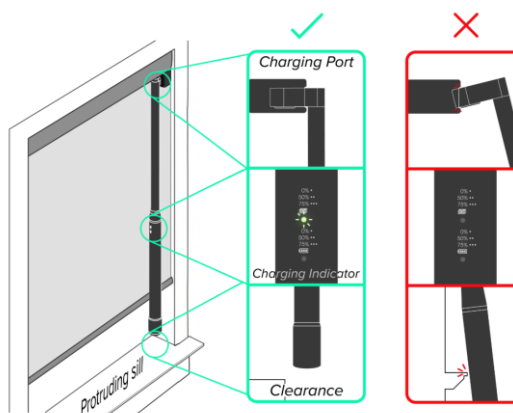
#### Without Window Sill

For an Inside Mount of 43” or taller, RevitaEZ™ will have enough clearance. For and Inside Mount under 43”, RevitaEZ™ can still be used as the shade is mounted flush to the opening and there is no protruding sill.



#### With Window Sill

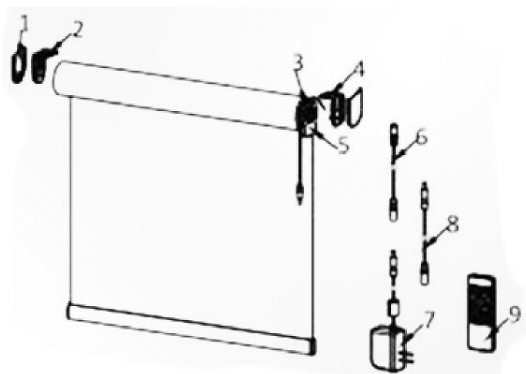
For a partially recessed shade, or Outside Mount application, be cautious of protruding sill interfering.



## Lift Systems—Motorization Plug In

- Control out-of-reach windows with a click of button.
- No cord operations ensure the safety of your children and pets.
- Shades are pre-programmed and ready to use after plugging in power cord.
- One remote controls multiple windows.
- Motorization options comes with a 5-channel remote and operates multiple shades individually or simultaneously. Each shade must be assigned to a channel.

### Plug-In Motor (MRS-32A)




No	Description
1	Bracket Cover
2	Shade Bracket
3	Motor
4	Shade Bracket
5	Button Box*
6	36W Adapter Connector Cord
7	36W Adapter
8	36W Adapter Extension Cord
9	Remote Control

\*Please see color coordination chart for Button box color

Item	Specifications	Image
Plug in motor (MRS-32A)	<ul style="list-style-type: none"> <li>• Motor <ul style="list-style-type: none"> <li>▪ No battery inside the motor</li> <li>▪ To be used with 36W Adapter + 36W Adapter connector cord</li> <li>▪ Tube size: 1 3/4"</li> <li>▪ Motor Position: Left or Right</li> <li>▪ Min/max width: 16"/96"</li> <li>▪ Min/max length: 12"/144"</li> <li>▪ Max qty of channels per motor can be set: 5</li> </ul> </li> <li>• 36W Adapter: Black or White with 59" cable length</li> <li>• 36W Adapter Connector Cord in Black or White with 4" length. Use for connecting 36W adapter with the motor.</li> <li>• 36W Adapter extension cord in Black or White (optional) –Length: 78.74"</li> </ul>	<p>Motor</p> <p>36W Adapter</p> <p>Connector Cord</p> <p>Extension Cord</p>
ShadeAuto Hub	<ul style="list-style-type: none"> <li>• Available only in black</li> <li>• Max Accounts per Hub: 10</li> <li>• Included: 1pc adapter + 1 USB Cable</li> <li>• Connect via Wi-Fi router or Ethernet</li> <li>• Must be compatible with the ShadeAuto App</li> <li>• It is recommended on Hub be installed on one floor/level.</li> </ul>	

Motorization—Motor & Remote Option

Remote Spec

Remote Control	<ul style="list-style-type: none"><li>• RF technology operates shade up to 20meters in the open space and 10 meters in the indoor visual line.</li><li>• Total 5 groups available.</li><li>• Each group can be paired with one or multiple shades.</li><li>• Max recommended qty of groups per shade: 5</li><li>• Program at the factory before shipping</li><li>• Color: Black only</li><li>• Pre-installed with batteries (CR2032 x2pcs).</li><li>• Compatible with the above motors expect for QuikClick™ Wand Control Motor (AM25).</li><li>• Default “All” button controls all shades at same time.</li><li>• It is recommended to pair same lift type of shades in same group to ensure the best use experience.</li></ul> <p><b>Remote Holder</b></p> <ul style="list-style-type: none"><li>• Color: Black only</li><li>• When ordering 1 remote control, defaulted with 1 remote holder supplied.</li></ul>	
----------------	---	---

**Note:** The order can be ordered with “no remote” for whole order and use the existing remote.