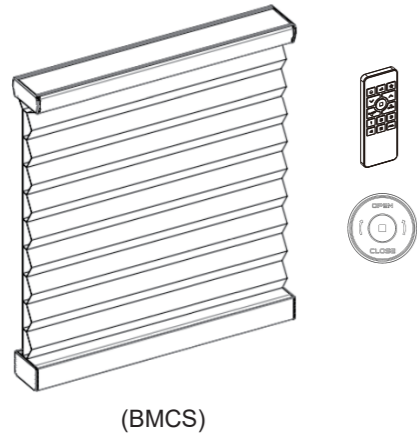


TruQuiet™ Motorized Shades Manual



NO.	Item	Specification
1	Power Source	8V Li-ion battery Pack
2	Radio type	2.4G RF
3	Frequency band(s)	2415~2459MHz
4	Maximum Transmit Power EIRP	<10mW
5	Motor type	Brush DC motor
6	Charging type	USB Type C
7	Charging Time	< 4.5 hours
8	Charging Temperature	5°C/41°F ~ 35°C/95°F
9	Operating Temperature	0°C/32°F ~ 40°C/104°F
10	Relative Humidity	0% ~ 90% (Non-condensing)

FCC ID: Q3V-BMCS1
IC ID: 28542-BMCS1
CAN ICES-003 (B)/NMB-003(B)



READ BEFORE INSTALLATION

▲WARNING - Important Safety Instructions

- Improper installation may cause injury. Read all instructions before installing or operating the device.
- Remove any unnecessary cords or components before installation.
 - Disconnect the shade from power before cleaning, maintenance, or part replacement.
 - Do not operate with wet hands.
 - This product contains no user-serviceable parts. Repairs must be performed by qualified personnel.

▲Lithium-Ion Battery Notice

- BMCS shades include a Li-ion battery pack. Misuse may cause overheating, smoke, fire, or explosion.
- Recharge every 3–6 months to maintain performance.
 - Use only approved accessories (Battery Pack, Remote, Hub, Repeater).
 - Do not modify or dismantle the product. Doing so voids the warranty.

Site Preparation

- Ensure the mounting surface and fasteners are appropriate for the installation material.
- Verify the shade's travel path is clear of obstructions.
- Retain all packaging until installation is complete and verified.

Supervision Requirements

- Not intended for use by children or persons with reduced physical or mental capability without supervision.
- Keep remote controls out of reach of children.
- Do not allow children to play with control devices.

Inspection & Maintenance

- Regularly inspect for imbalance or damage to cables, springs, and fixings.
- Do not operate if any adjustment or repair is required.
- Do not operate while nearby cleaning or maintenance is being performed.

TOOLS YOU WILL NEED

- Level
- Measuring Tape
- Pencil
- Power Drill (6mm hex driver and drill bit)
- Screwdriver

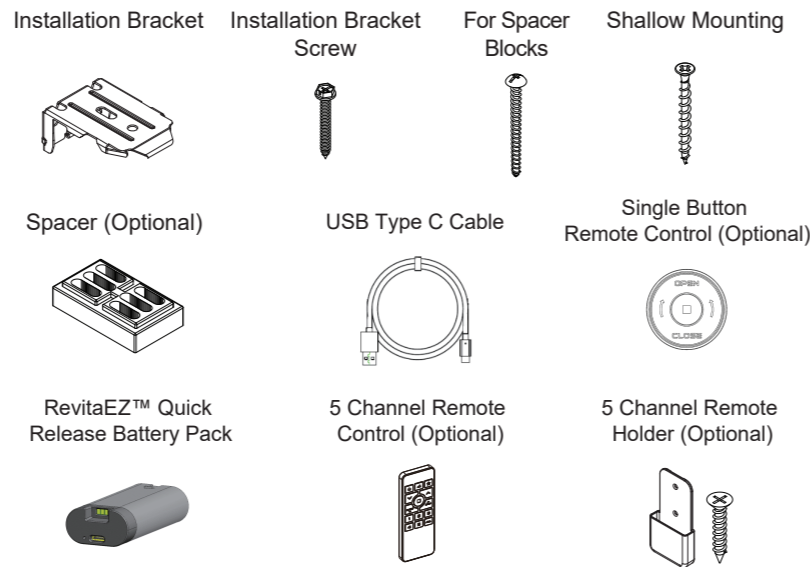


You will need to use the following fasteners for your particular mounting surface.

Surface	Fastener
Wood	Screws (Provided)
Drywall/Plaster	Wall Anchors, Expansion Bolts (Not Provided)
Metal	Sheet Metal Screws (Not Provided)

GETTING STARTED

Check Standard Components/Hardware:



Note: One remote is required per order.

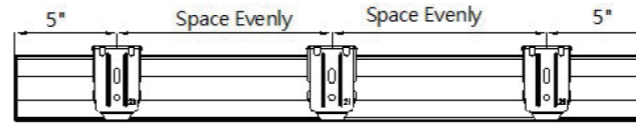
Hardware Quantities (Based on Order Width X)

Order Width (X)	X ≤ 39"	39" < X ≤ 66"	66" < X ≤ 93"	X > 93"
Installation Bracket	2	3	4	5
Installation Bracket Screw	4	6	8	10
Spacer Block (Optional)	As ordered: 1 per bracket or 2 per bracket (Spacer block quantities vary based on order request.)			

MOUNTING INSTALLATION BRACKETS

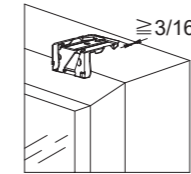
The installation brackets are used for both **inside** and **outside** mounts. Bracket spacing requirements are identical for both mounting types.

- Measure 5 inches from each end of the headrail and mark bracket locations.
- If the brackets aren't even, place thin spacers behind them to keep the shade level.
- Proper bracket alignment will make installation easier.



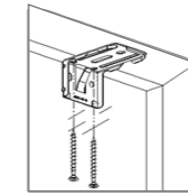
Inside Mount:

- Allow a minimum of 3/16 inch clearance from the front of the bracket to the window opening edge (see diagram).
- Secure each bracket using two screws.
- Use wall anchors for drywall or plaster.



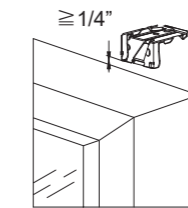
Shallow Mounting

- Use two flat-head screws positioned as shown in the diagram.



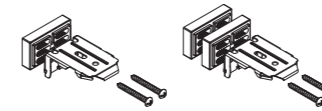
Outside Mount:

- Install brackets with at least 1/4" from the bottom of the bracket to the window opening edge (see diagram).
- Secure each bracket with two screws.
- Use appropriate wall anchors for drywall or plaster.



Spacer Block Use (If Provided)

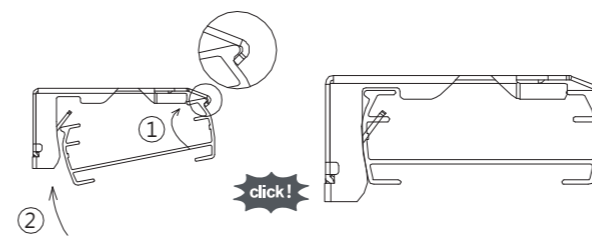
- The raised side of the spacer block must face the bracket.
- Follow provided diagrams for correct positioning.



Install the Shade:

- Position the headrail at an angle so the front lip hooks onto the front of the bracket.
- Push upward on the back of the headrail until it snaps securely into place.
- You will hear a click once fully engaged.

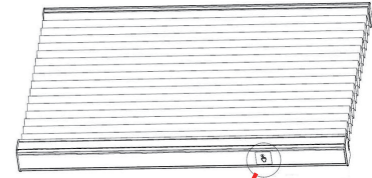
Installation is now complete.



POWER ON / OFF

Power ON

Hold the shade button for 3 seconds and the green light will flash 4 times.



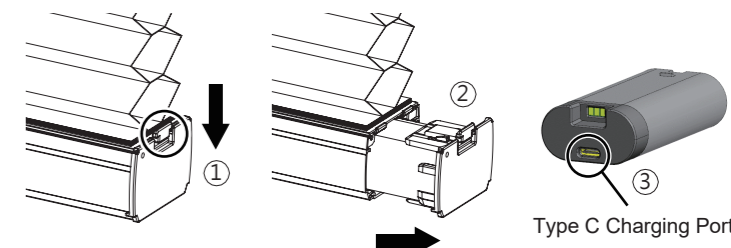
Power OFF

Hold the shade button for 3 seconds and the red light will flash 4 times.



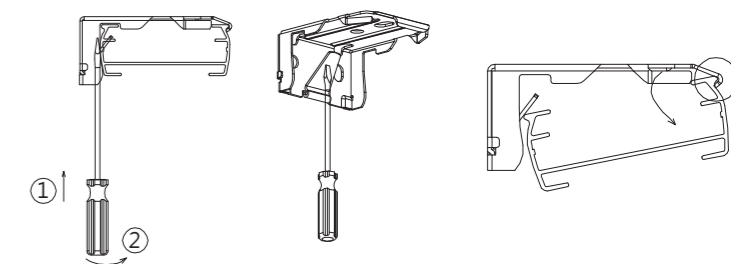
REMOVING THE BATTERY FOR CHARGING

- Press the latch on the top of the battery placement.
- Release & slide the battery out of the bottom rail.
- Connect the USB Type-C cable to the charging port on the battery to charge it.



REMOVING THE SHADE

- Fully raise the shade.
- Insert a flat screwdriver between the bracket and headrail.
- Gently release the bracket clip while supporting the shade.



ADDITIONAL NOTES

- Shades with rechargeable batteries are shipped with approximately 50% charge, enough for initial testing.
- Charge the battery fully before regular operation.
- For full operating instructions and advanced settings, refer to the BMCS User Manual.

Scan to learn more

