


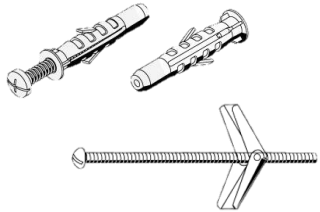
Installation Instructions for Vertical Blind

In order to have an accurate installation it is necessary to follow these simple steps.

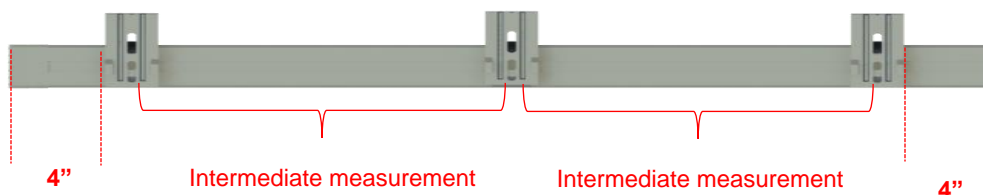
1. Tools needed

Marker or pencil, measuring tape, screwdriver and screws (chose the best one for the job).



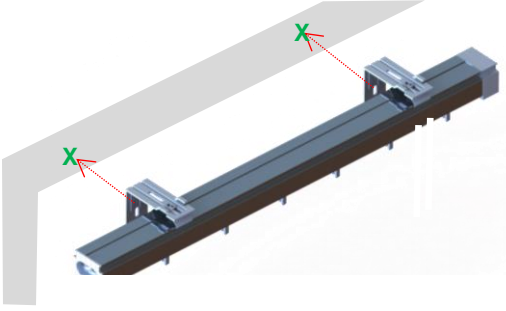
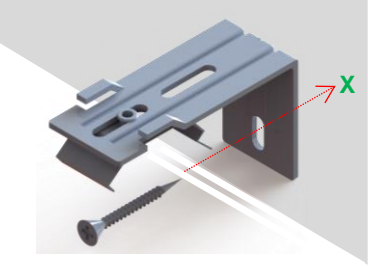
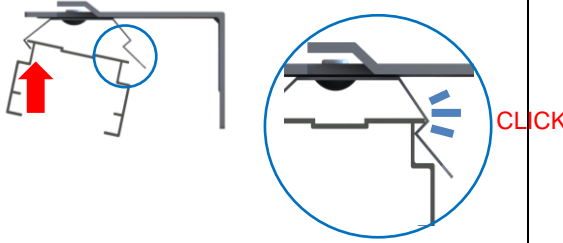
Screws	Sheetrock screws Flat or Phillips head screw 1 1/2" (included)	
Alternative screws	These screws are used on concrete and hard surfaces (screws not included)	

2. Bracket Installation *(Before installing Brackets confirm with the chart below to see how many you will need per blind.)*



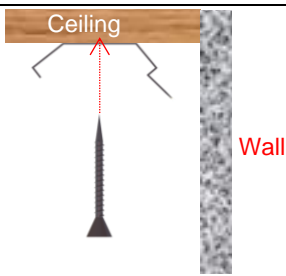
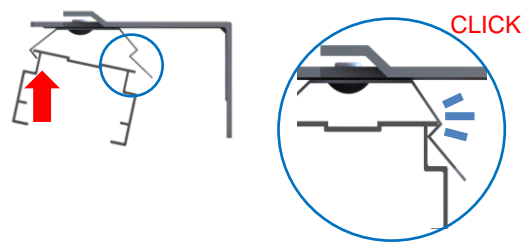
Support amount			
Width in inches		Support amount	Intermediate measurement
Minimum	Maximum		
8	55	2	4- 48
56	79	3	4-36
79	103	4	4-32
103	127	5	4-30
127	150	6	4- 29
150	174	7	4-28
174	197	8	4 - 27

Wall Installation

<p>1. With pencil mark were you will be marking the holes. for the installation of the brackets</p> <p><i>Should be 4" from each end of the rail.</i></p>	
<p>Placing the brackets in the wall</p> <p>2. With the drill, make the holes in the wall, then secure the brackets with the screws.</p>	
<p>Placing the rail on the supports</p> <p>1. 3. Once the brackets have been positioned, attach the rail to the brackets. Fit the front of the rail and then push up on the back. Once you hear a CLICK, you're finished.</p>	

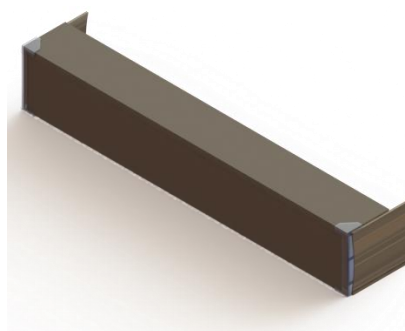
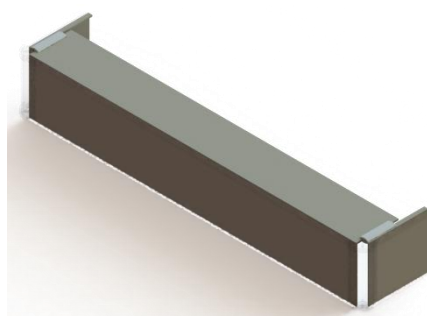
NOTE: For ceiling or in frame installations, it's recommended to install the valance with its respective sides first (unless an inside mount, then leave the sides off).

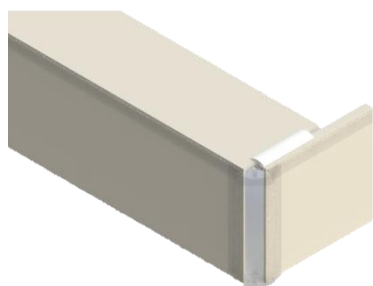
Ceiling or inside mount installation

<ol style="list-style-type: none">2. With a pencil, mark the holes where the supports are going to go. <i>Should be 4" from each end of the rail.</i>3. With the drill, make the holes in the ceiling, then secure the brackets with the screws.	
<p>Placing the rail on the brackets</p> <ol style="list-style-type: none">4. Once the brackets have been positioned, attach the rail to the brackets. Fit the front of the rail and then push up on the back. Once you hear a CLICK, you're finished.	

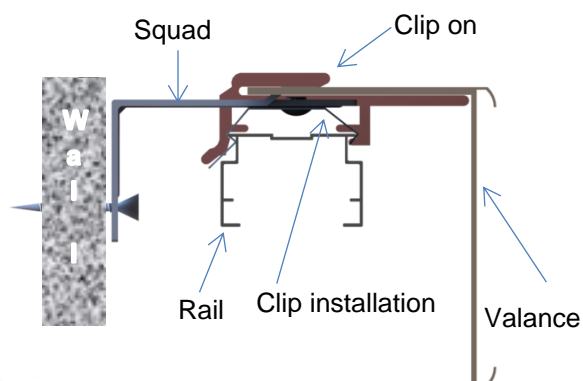
NOTE: For ceiling or in frame installations, it's recommended to install the valance with its respective sides first (unless an inside mount, then leave the sides off).

3. Valance installation (*This procedure applies to square Valance or round Valance*)

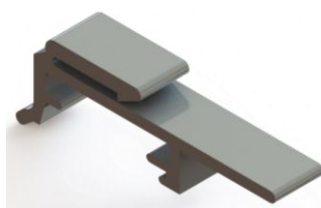




Valance installation to wall

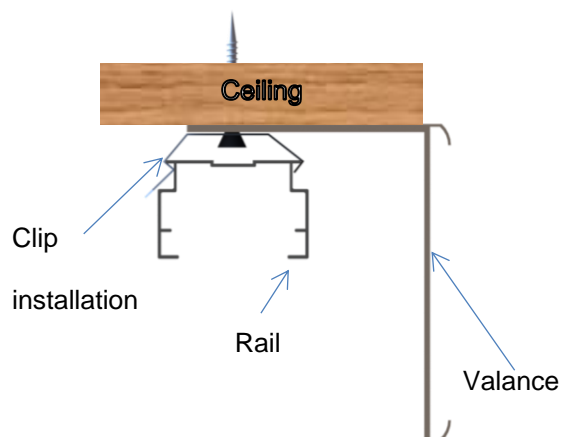


To install the valance on a wall mount, you will need a plastic clip. Hook the clip to the aluminum rail, then slide the top of the valance into the clip until it is fully secured.



Clip on

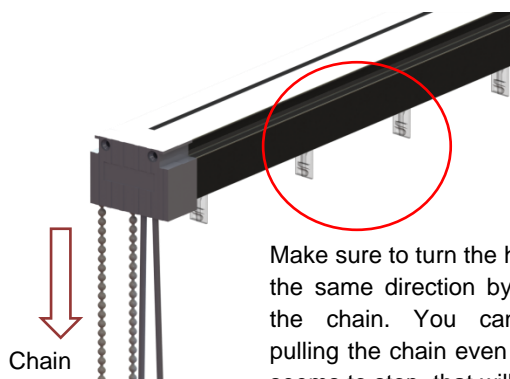
Valance installation to ceiling or inside mount



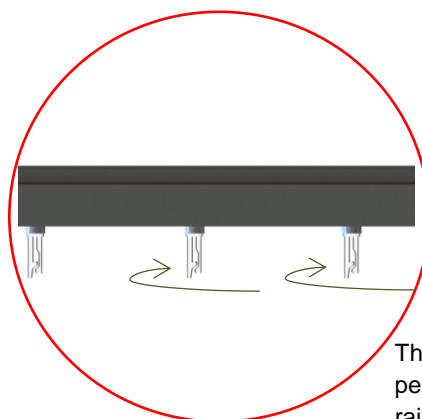
For this type of installation install the mounting bracket through the valance, Make sure the slats do not touch the valance

4. Orientation of transparent hooks

Once the rails have been installed, orient the hooks from which the slats will hang. Make sure all hooks are facing the same direction.



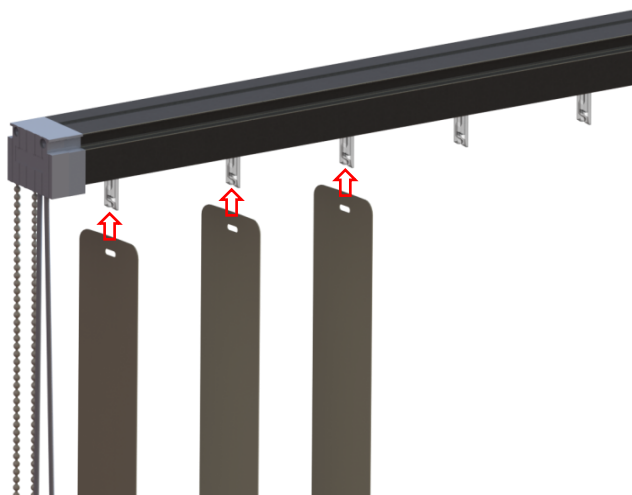
Make sure to turn the hooks in the same direction by pulling the chain. You can keep pulling the chain even when it seems to stop, that will ensure all of the hooks are aligned with each other.



The hooks must be perpendicular to the rail.

5. Placing Slats

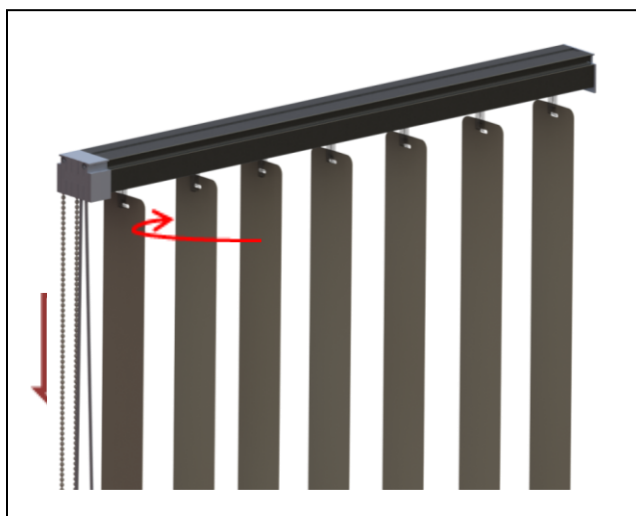
With all the hooks oriented in the same position, insert the slats one by one in each hook, so that they are perpendicular to the rail.



6. Blind Control

NOTE: When opening and closing the blind, always do so with the slats perpendicular to the rail, to prevent damage to the slats and ensure the correct operation of the blind.

With Cord



Pull the front of the chain to turn the slats in one direction, or the back to turn them in the opposite direction.

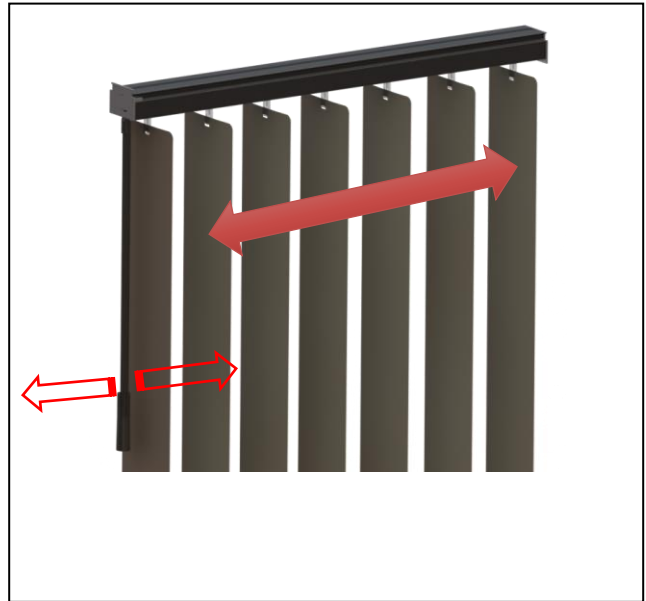


Pull the front of the cord to slide the slats one way, or the rear part to move it in the opposite direction.

With Wand



Twist the wand to turn the slats, and twist it the other way to turn them in the opposite direction.



To move the slats horizontally, simply pull the wand one way or the other.



When opening and closing the blind, always do so with the slats perpendicular to the rails to prevent damage to the slats and ensure the correct operation of the blind.

7. Maintenance

Slats should be cleaned periodically, with a duster or vacuum to remove dust.



If slats contain stains, you can use a dampened cloth (use only water).

Start at the top and work your way to the bottom. Be careful not to pull off the slats.



Testing your blind

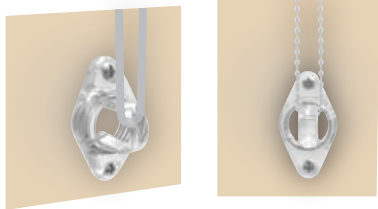
Follow the next steps to install the SafetyHold3 and test your blind:

RollEase

1 Install the SafetyHold3

The SafetyHold3 must be secured to the headrail to make the blind inoperable without purposeful action of installer.

Using the screws provided, attach the safetyhold3 to the wall, allowing some slack for the bead chain and the cord connectors to slide through easily.



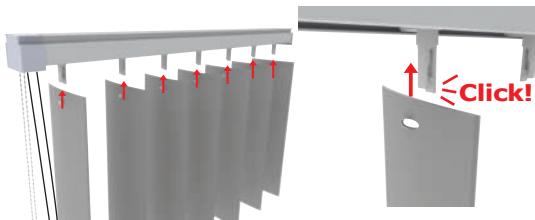
2 Centering the slats

Pull the chain down until the carrier stems are perpendicular to the window.



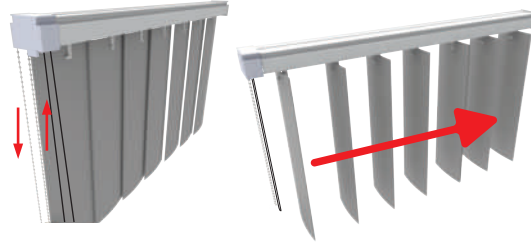
3 INSTALLING THE SLATS

Push the slat into the carrier stem then pull it slightly straight down to lock it in place and verify it has been attached properly, repeat these steps for the rest of the slats.



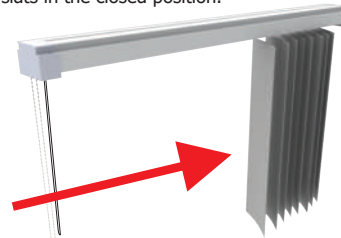
4 Testing the slats rotation.

Pull the metal bead once in each direction rotating the slats from front to back to align them.

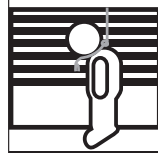


5 Testing the sliding

Alternatively pull the cord to ensure the the blind trasverses smoothly in both directions. Do not traverse the blind with the slats in the closed position.



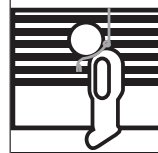
! WARNING



Window Blind Cord Can STRANGLE Your Child.

To prevent strangulation, purchase cordless products or products with inaccessible cords.

! ADVERTENCIA



La cuerda ciega de la ventana puede ESTRANGULAR su niño.

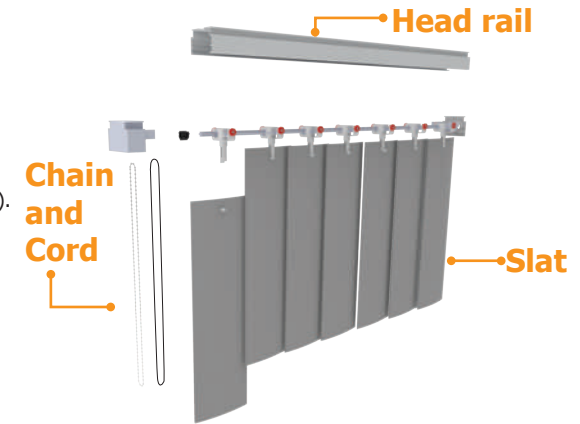
Para evitar el estrangulamiento, compre alternativas inalámbricas o productos con cables inaccesibles.

Vertical blind installation instructions

Before you begin your installation:

- Read all the instructions
- All of our vertical blinds include a head rail, slats, a valance (if ordered) and one installation kit according to the size you ordered.
- Check the head rail and slats for proper width and length (deductions have been made to fit or cover your window frame).
- Make sure you have appropriate tools and hardware for the installation.
- Check the installation surface to use appropriate screws.

DEDUCTIONS	
HEADRAIL WIDTH	1/8"
SLAT HEIGHT	2"

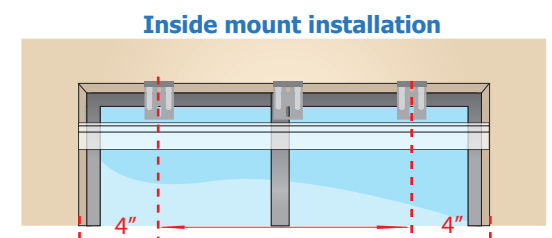
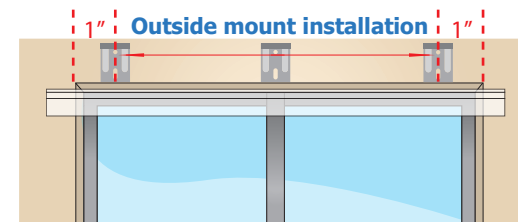


Tools you may need (not included)

The tools you need for installing your blinds may vary, depending on the installation surface and the mounting bracket type.



Mark the brackets location



- Please review the table below to determine the number of brackets your will need.
- Mark a spot for all the brackets as described in the picture above.
- The brackets should be placed in a straight line that is parallel to the wall and distributed equally to hold the head rail.



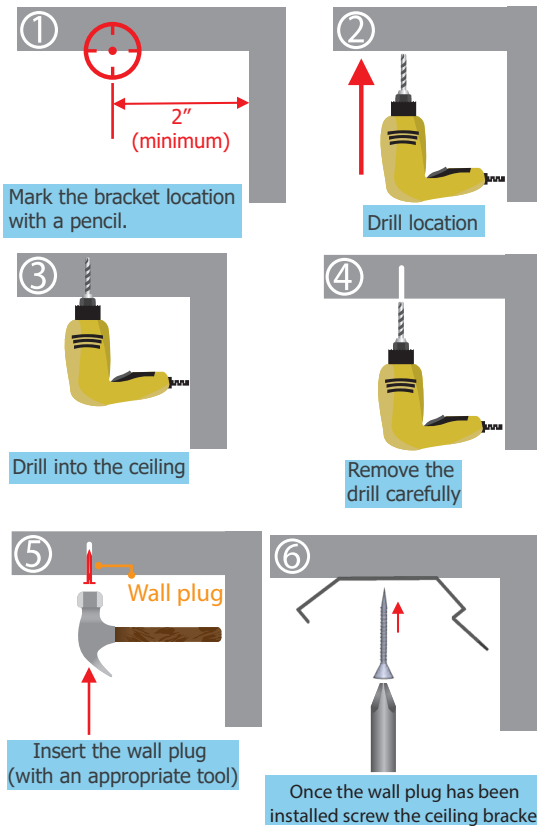
Wall and ceiling bracket table					
Head rail width in inches		# installation Brackets	Head rail width in inches		# installation Brackets
Min	Max		Min	Max	
12"	39"	2	72"	87"	5
40"	55"	3	88"	103"	6
56"	71"	4	104"	120"	7



Installation instructions for inside mount

Without a valance

Follow the next steps to drill and install the ceiling brackets.

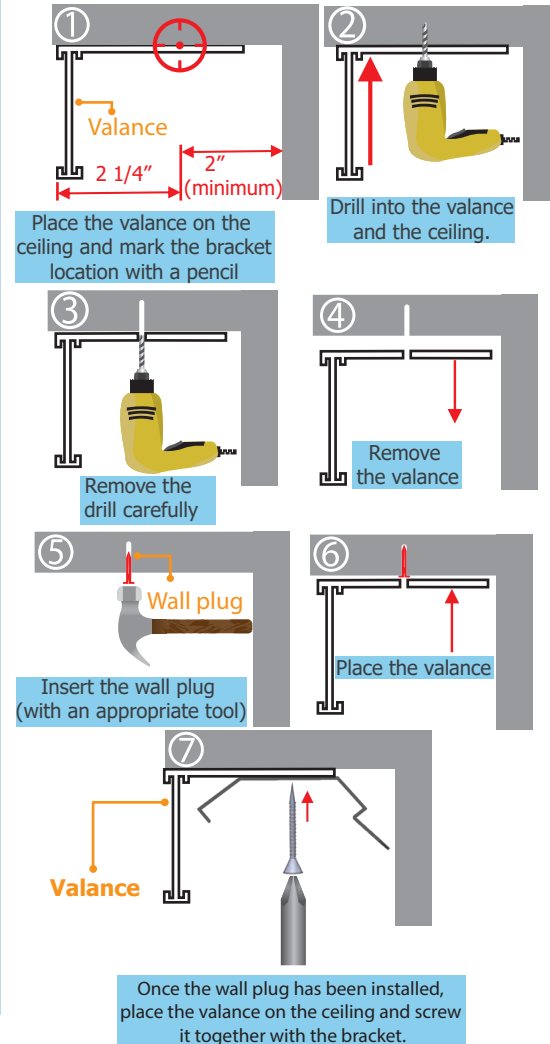


NOTE:

These drilling steps are recommended for a concrete surface otherwise use screws only or alternate fasteners.

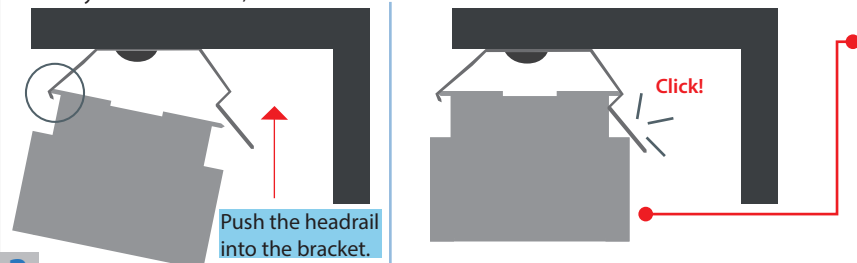
With a valance

Follow the next steps to drill and install the ceiling brackets and the valance.



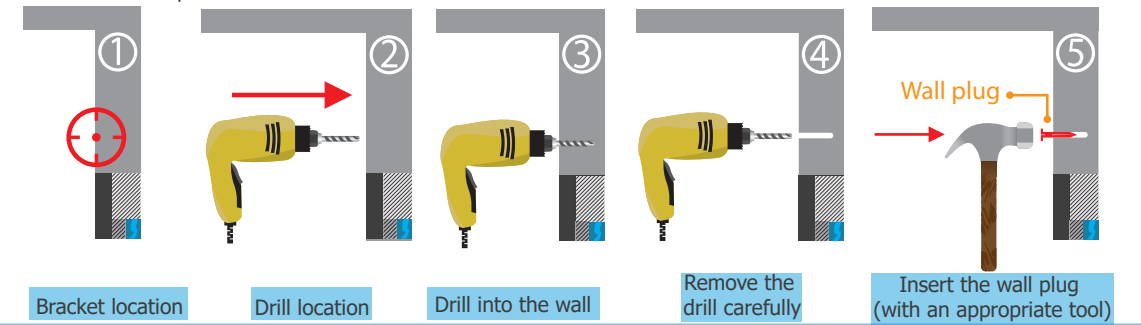
Installing the headrail

Once the brackets have been installed, place the head rail into the brackets. Once you hear a CLICK!, the headrail has been inserted.



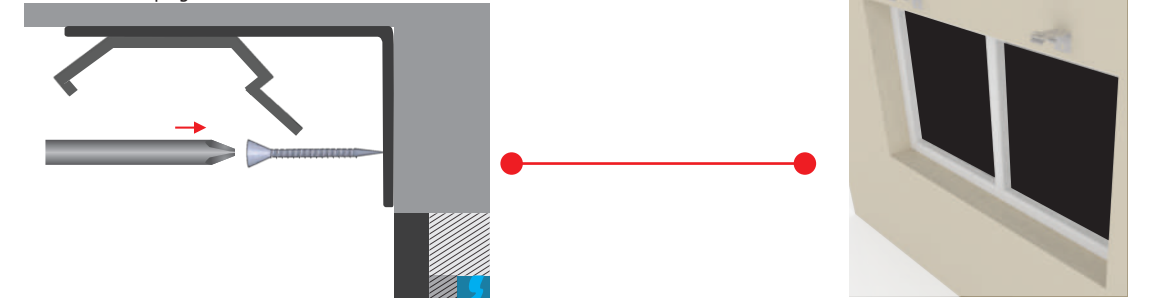
Installation instructions for outside mount

Follow the next steps to drill and install the wall brackets.



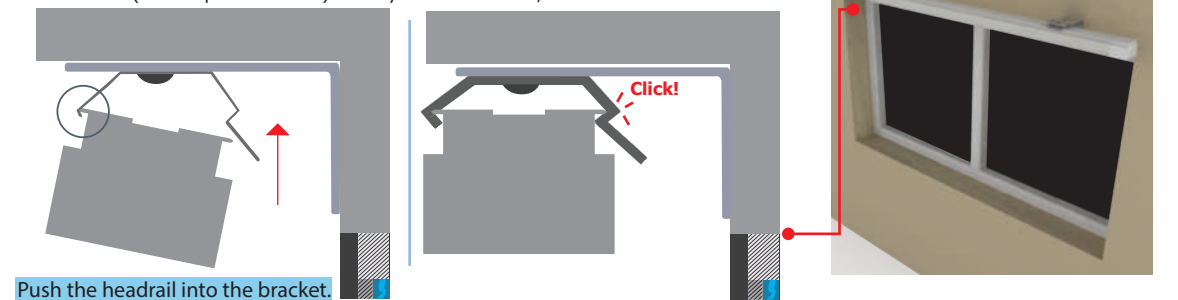
Installing the wall brackets.

Once the wall plugs have been installed screw the wall brackets.



Installing the head rail

Once the brackets have been installed, attach the head rail to brackets (see the pictures below). Once you hear a CLICK!, the head rail has been inserted.



NOTE: These drilling steps are recommended for a concrete surface otherwise use screws only or alternate fasteners.

If you need to install your blind outside the window frame with a valance

If you ordered a valance, you should put the clip-ons close to each installation bracket (see the pictures below).

