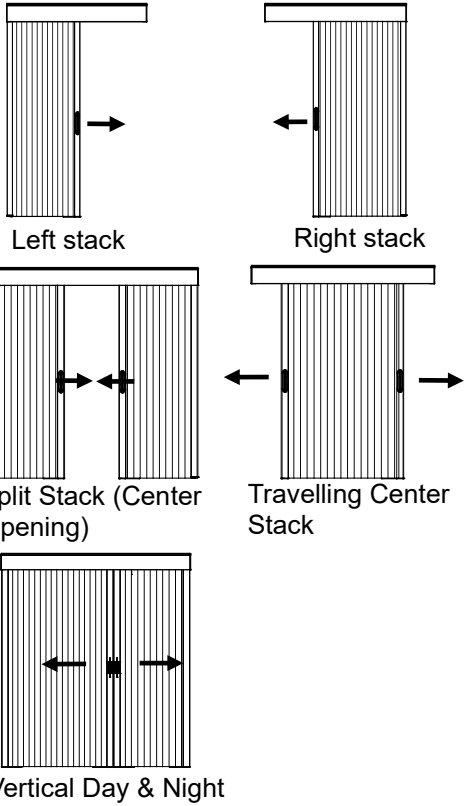


## Installation Instructions

### Honeycomb Shades

#### Patio Door Vertical & Vertical Day&Night



### Getting Started




Remove the shade from the package. Save the packaging until the shade is installed and working to your satisfaction.

#### Tools Needed :

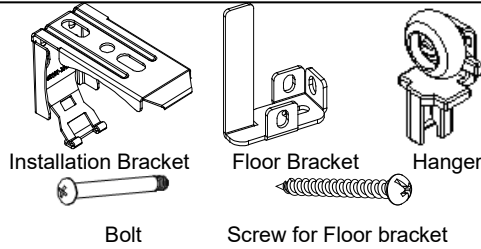
- Power drill and drill bit
- Measuring tape
- Screwdriver
- Level
- Pencil
- Pliers



You will need to use the following fasteners for your particular mounting surface.

Surface	Fastener
Wood	1 1/4" Screws (Provide) 
Drywall/Plaster	Wall Anchors, Expansion Bolts (Not Provide) 
Metal	Sheet Metal Screws (Not Provide) 

### Check Component/Hardware:



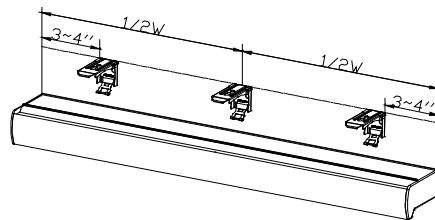
### Hardware Standard Quantity

Order Width (X)	X ≤ 39"	39" < X ≤ 66"	66" < X ≤ 93"	93" < X ≤ 120"	X > 120"
Installation Bracket	2	3	4	5	6
Floor Bracket	Right stack	1			
	Left stack	1			
	Travelling Center Stack	0			
	Split Stack (Center Opening)	2			
1 1/4" Screw for Bracket	installation bracket qty x 2 + floor bracket qty				
	Spacer Block (Optional) 1pcs for extend distance 10mm 2pcs for extend distance 18mm				
Bolt	Right stack	1			
	Left stack	1			
	Travelling Center Stack	2			
	Split Stack (Center Opening)	2			
Hanger	Vertical Day & Night				2
	Same as clip qty				

Note: Optional flat head screws included. Use as needed.

### Step 1: Bracket Installation

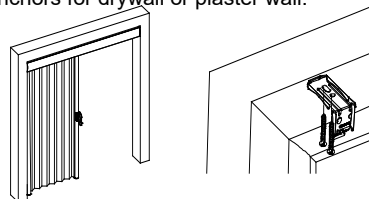
Measure 3"~4" from both ends of the head rail. Mark the



bracket location on the mounting surface, proper alignment of brackets will make installation easier.

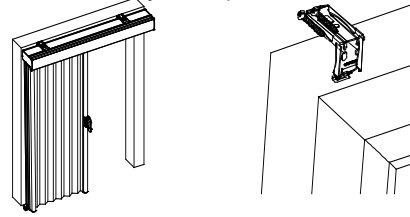
#### Inside Mount:

Align the front of brackets flush against the wall. Use two 1 1/4" mounting screws to secure brackets. Use wall anchors for drywall or plaster wall.



#### Outside Mount:

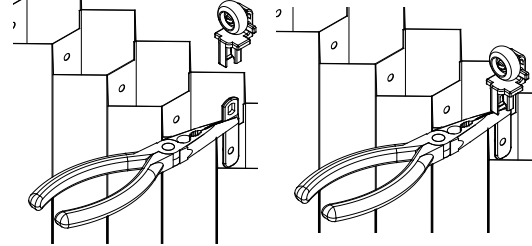
Position the top of bracket at order height +1/8". Use two 1 1/4" mounting screws to secure brackets. Use wall anchors for drywall or plaster wall.



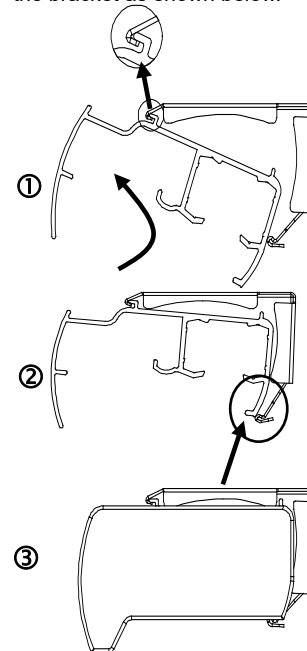
### Step 2: Shade Installation

a. Assemble the clips (pre-attached on the blanket) into hangers (find in hardware box) by using pliers as below photo.

For convenient operation, reverse the shade when open package and face to the back of blanket.

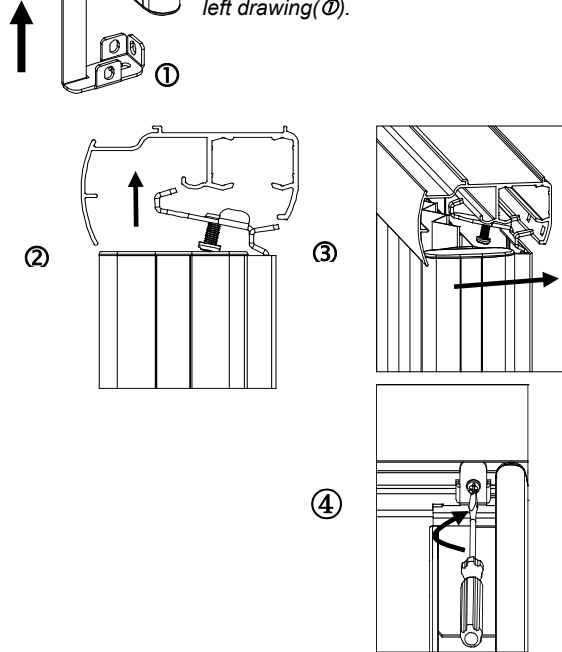


b. Position head rail at an angle so that it is hooked to the front of the bracket. Then push it upward to snap into the bracket as shown below.

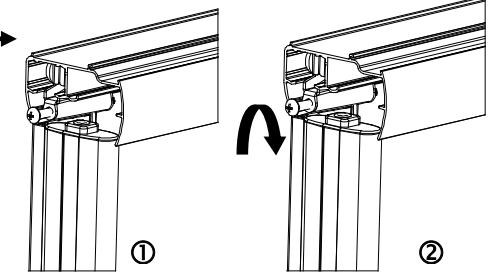


c. Install unmovable vertical rail. Push the unmovable vertical rail from down to up as below drawing ②. And then, push the fixing hanger into the gap of headrail as drawing ③. Locking the fixing hanger bolt tightly.

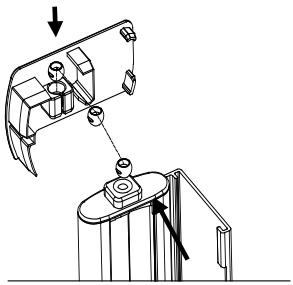
**Note:** Before installing the unmovable vertical rail, don't untie cords. Attach the floor bracket to the end cap of unmovable vertical rail, shown in left drawing (D).



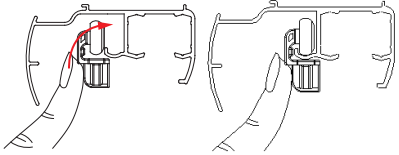
d. Install movable vertical rail. Align the hanger shaft hole with the sliding supporting shaft hole, and insert the bolt into the shaft hole completely (①). Screw the bolt tightly clockwise (②).



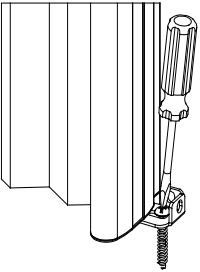
e. Untie the cords. Put the buckle bead into groove of headrail end cap (make sure the bead buckle from groove top down) as drawing.



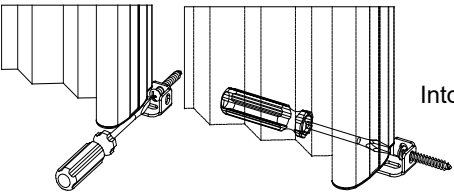
f. Press hangers into headrail from shade front



g. Attach the screw of Floor Bracket into the floor or wall shown below. Floor Bracket has been pre-attached to the end cap of unmovable vertical rail

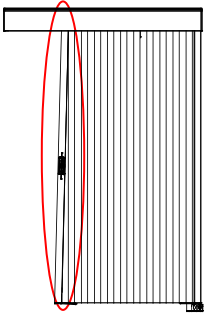


Into the Floor

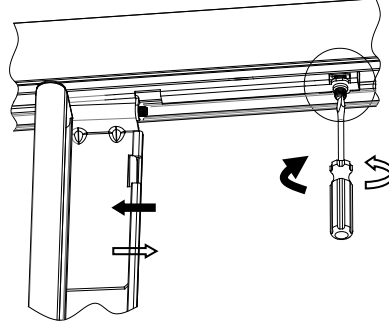


Into the Wall

h. If the vertical rail is not perpendicular to the floor, adjustment is necessary.

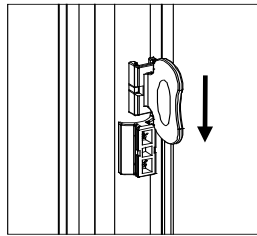


Not perpendicular



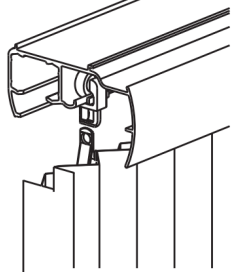
### Step 3: How to Install Shade Handle

Slide the handle onto the plastic piece pre-attached to the rails.

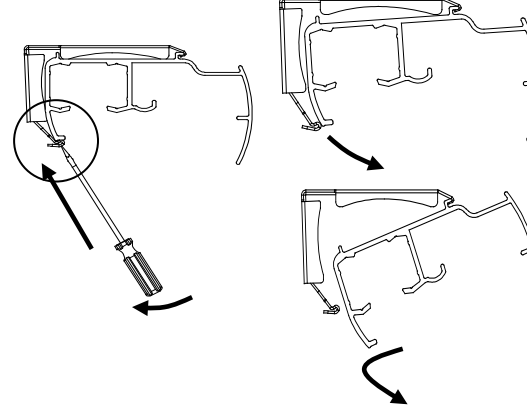


### Step 4: Remove the shade

Please use the reverse steps of installing vertical rail and shade to remove the vertical rail and shade.  
Note: Separate clips from hangers as below drawing, the hangers leave on headrail.



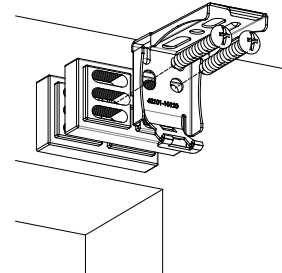
Gently pry the bracket off the head rail with a flat screwdriver as below drawing.



### Installation of spacer block (for OB)

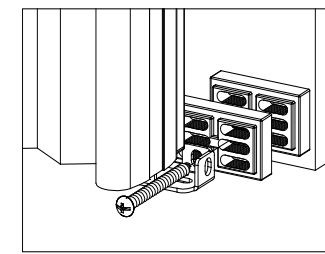
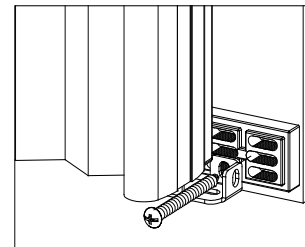
**For installation bracket:** Install the spacer block (1pc or 2pcs) at the backside of the installation bracket as below pictures.

Extend up to 3/8" for 1pc spacer block. Extend up to 11/16" for 2pcs spacer block.



**For floor bracket:** Install the spacer block (1pc or 2pcs) at the backside of the Floor bracket as below pictures.

Extend up to 3/8" for 1pc spacer block. Extend up to 11/16" for 2pcs spacer block.



**⚠️ Spacer block will be provided only when customer request.**

### Troubleshooting

Problem	Solution
When the cord is loose, adjustment is necessary. a. Remove the buckle bead from the headrail end cap. b. Remove the cord knot from the buckle, readjust the cord length and tie a knot. Put back the buckle bead into the headrail end cap. Do not over tight.	

