

Roller Shades

Installation Instructions

NO VALANCE (Pages 1 - 10)

- Continuous Chain Loop
- Safety Device (Page 5)
- Cordless

FABRIC WRAPPED CORNICE (Page 11)

INTERMEDIATE BRACKET (Pages 12 - 14)

SEMI-OPEN CASSETTE (Pages 15 - 20)

- Continuous Chain Loop
- Cordless

FASCIA (Pages 21 - 30)

- Continuous Chain Loop
- Cordless

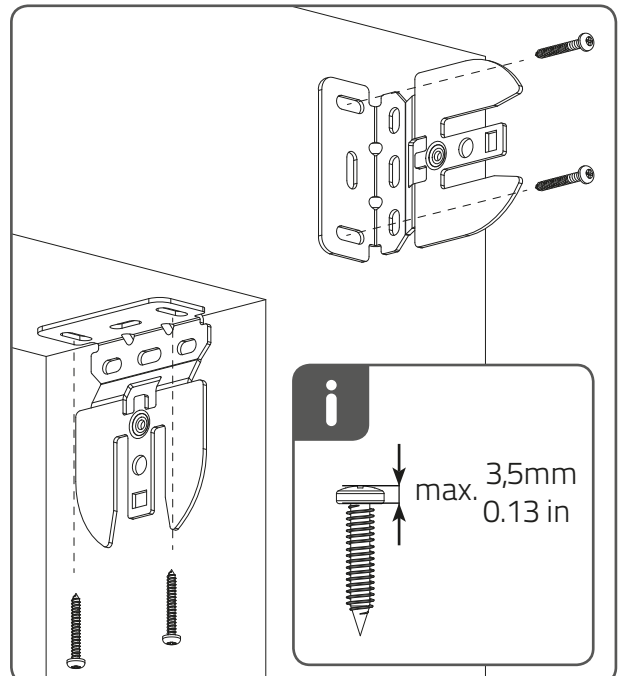
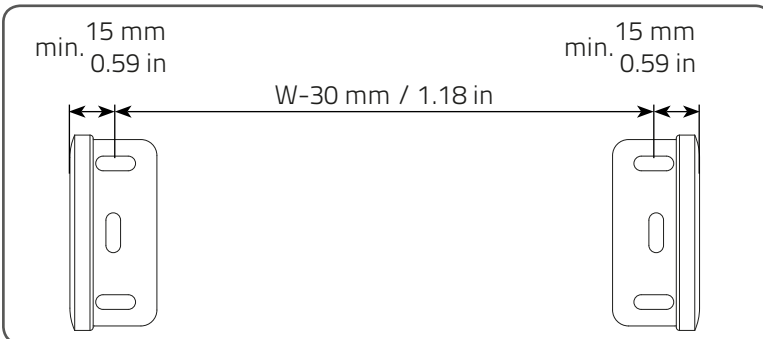
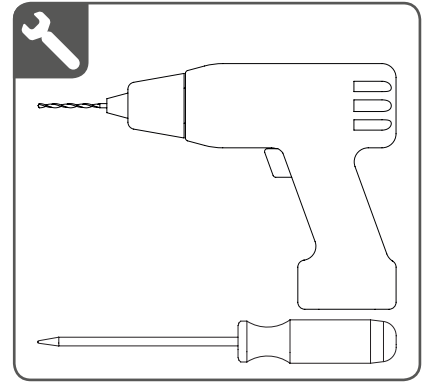
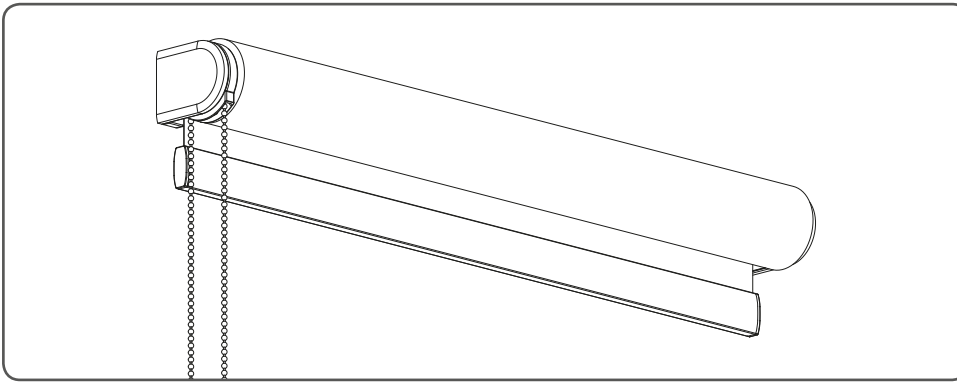
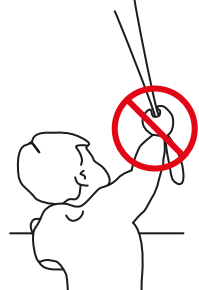
MOTORIZED (Pages 31 - 42)

Installation - Open Roll with Continuous Chain

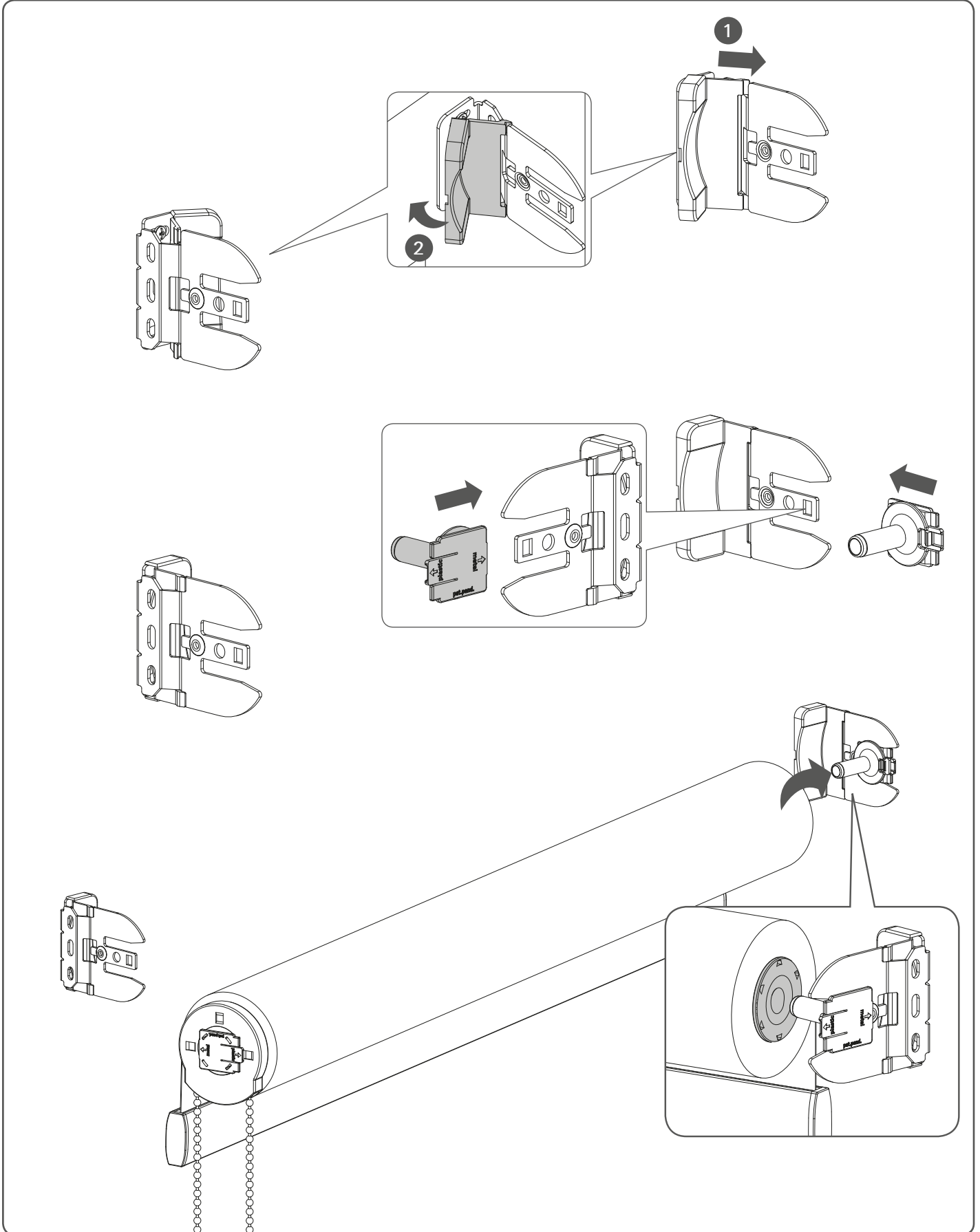
Read the instructions carefully before assembling and using the product.
Assembling process can be completed by non-professionals. For indoor use only.

WARNING

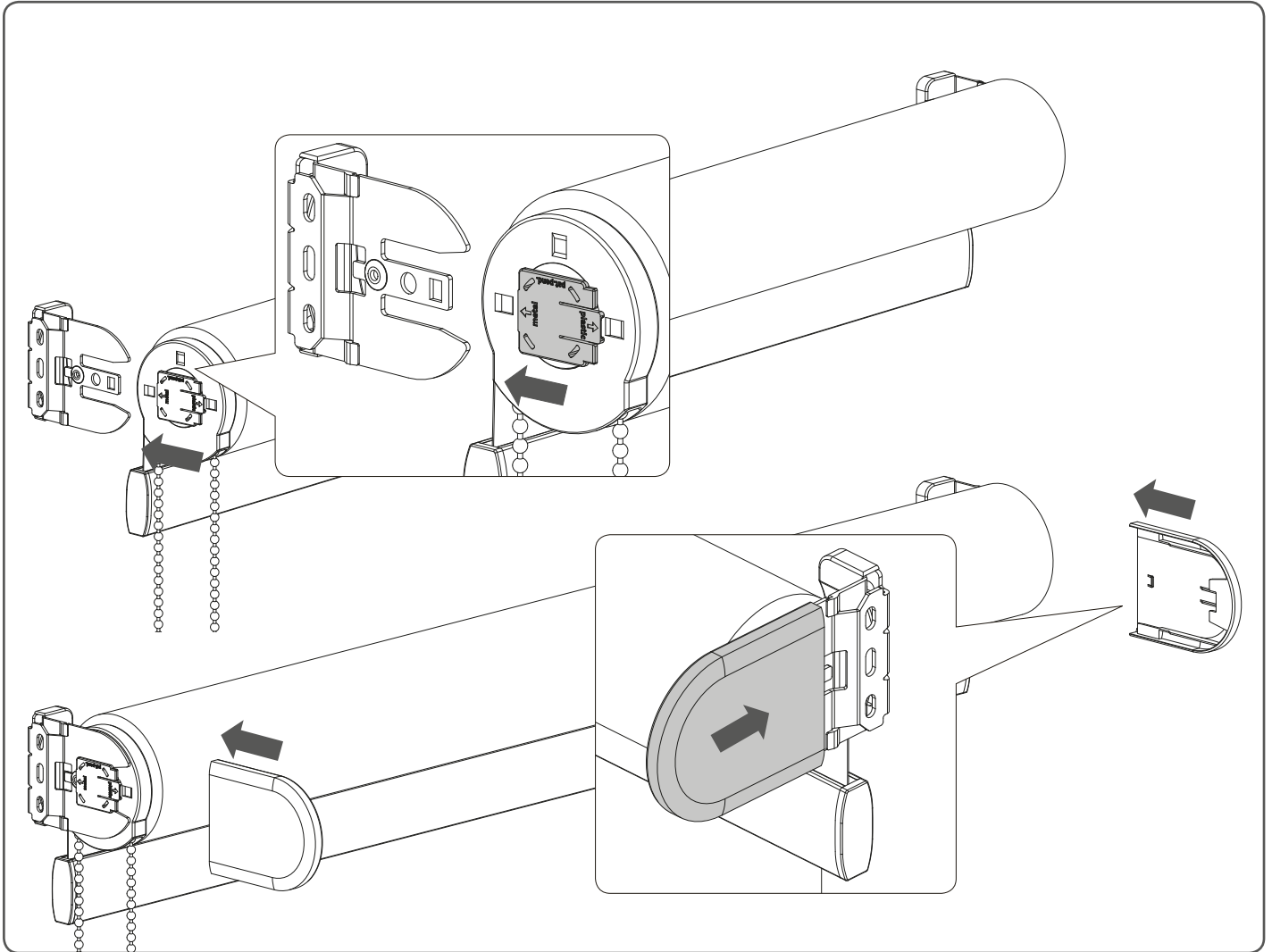
- Young children can strangle in the loop of pull cords, chains and tapes, and cords that operate window coverings.
- To avoid strangulation and entanglement, keep cords out of the reach of young children. Cords may become wrapped around a child's neck
- Move beds, cots and furniture away from window covering cords.
- Do not tie cords together.
Make sure cords do not twist together and form a loop.



Installation - Open Roll with Continuous Chain



Installation - Open Roll with Continuous Chain

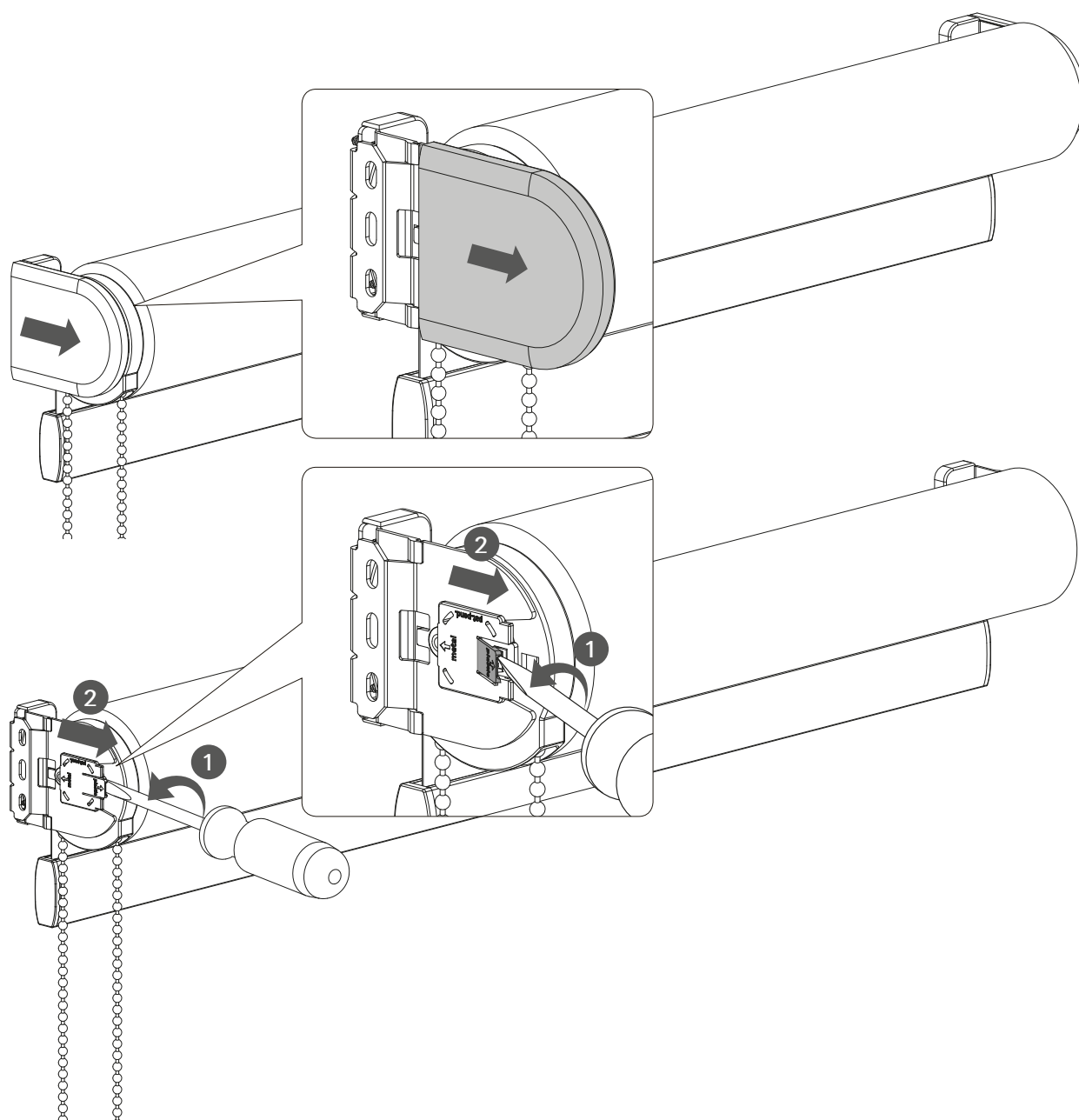


⚠ WARNING

Install the child safety device as specified in the childsafe manual.



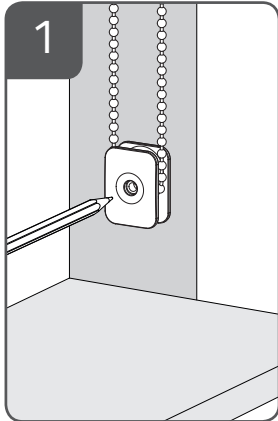
Removal - Open Roll with Continuous Chain



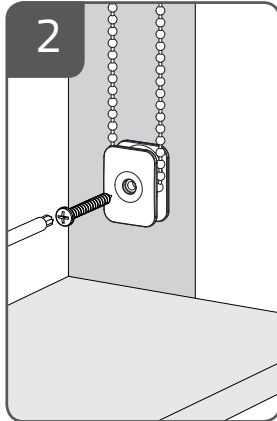
WARNING

The Safety Device is a fixed tension device for operating ball-chains that form a continuous loop. This device must be applied in chain loops that do not have a breakaway design. The safety device prevents free-hanging loops in operating chains. Install the safety device at the maximum distance possible from the control mechanism to prevent slack in the loop. Upon delivery to the end user, the device must be attached to the chain. The tensioning device is provided with fasteners for installation to wooden wall substrates. Please read the following information when installing the tensioning device. For other wall types please use appropriate screws that are suitable for your wall.

A: Inside Mount: Fully recessed shade and safety device

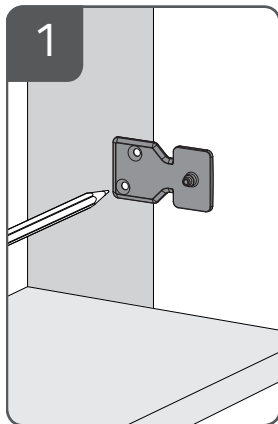


Position so there is no slack within the loop.

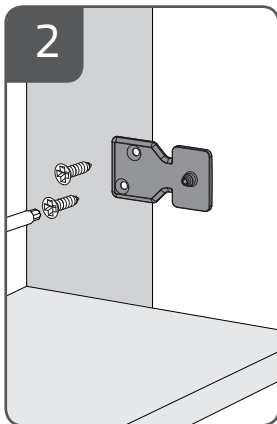


Mount the safety device.

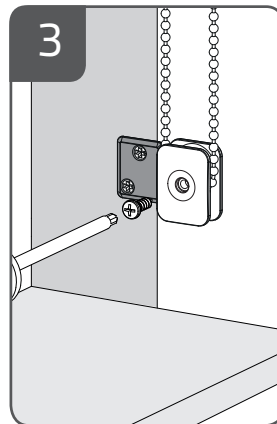
B: Inside Mount: Partially recessed shade and safety device



Position so there is no slack within the loop.

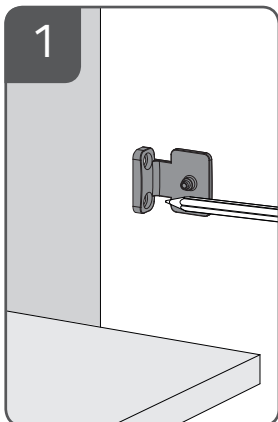


Secure mounting bracket.

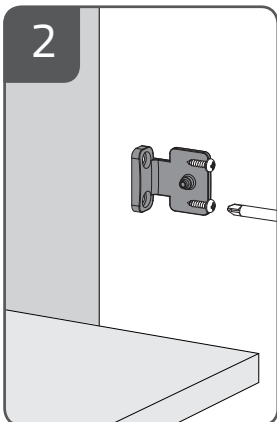


Mount safety device mounting bracket.

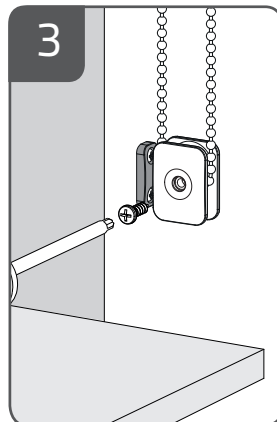
C: Outside Mount: Shade and safety device outside window



Position so there is no slack within the loop.

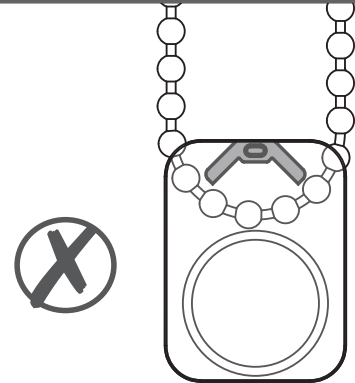


Secure mounting bracket.

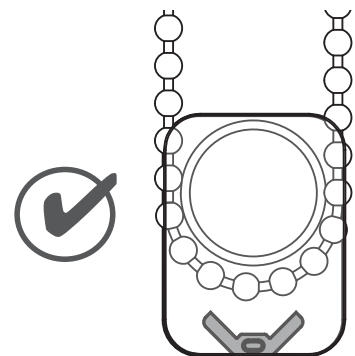


Mount safety device to the mounting bracket.

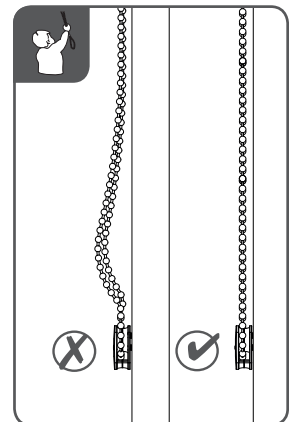
INSTALLATION TIPS



Shade will not operate if safety device is upside down.



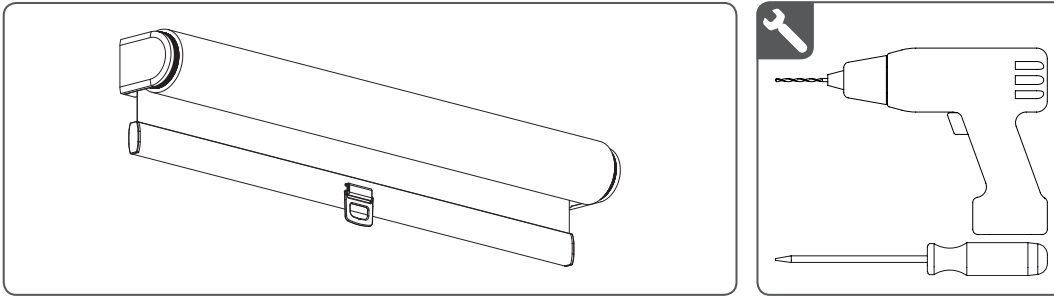
Position the chain side of the safety device before installing.



Install the safety device so there is no slack in the chain loop.

Installation - Open Roll with Cordless

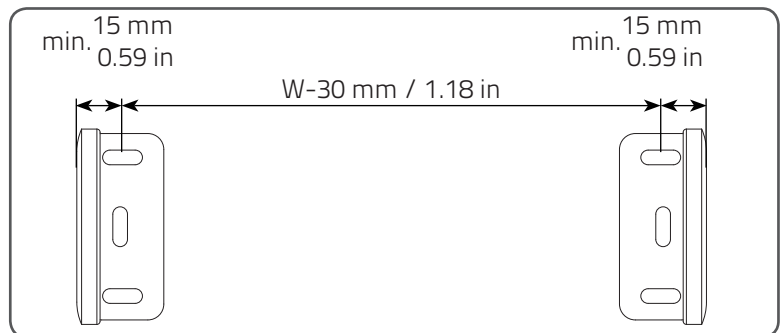
Read the instructions carefully before assembling and using the product.
Assembling process can be completed by non-professionals. For indoor use only.



Red tension clip needs to remain on the shade until the shade is installed.

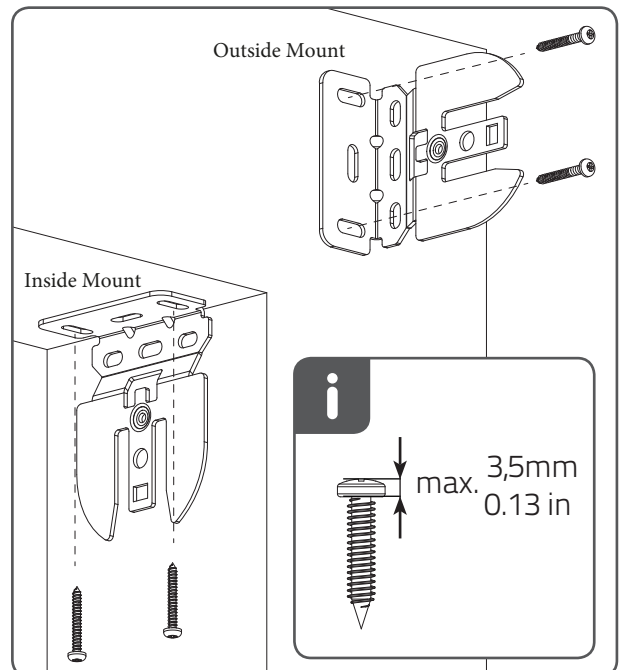
Step One:

- Use the brackets to mark the screw locations
- On outside mount, make your marks so the distance from the outside edge of the bracket to the outside edge of the other bracket equals your ordered width
- Brackets must be level to each other for the shade to operate properly (for both inside mount and outside mount)



Step Two:

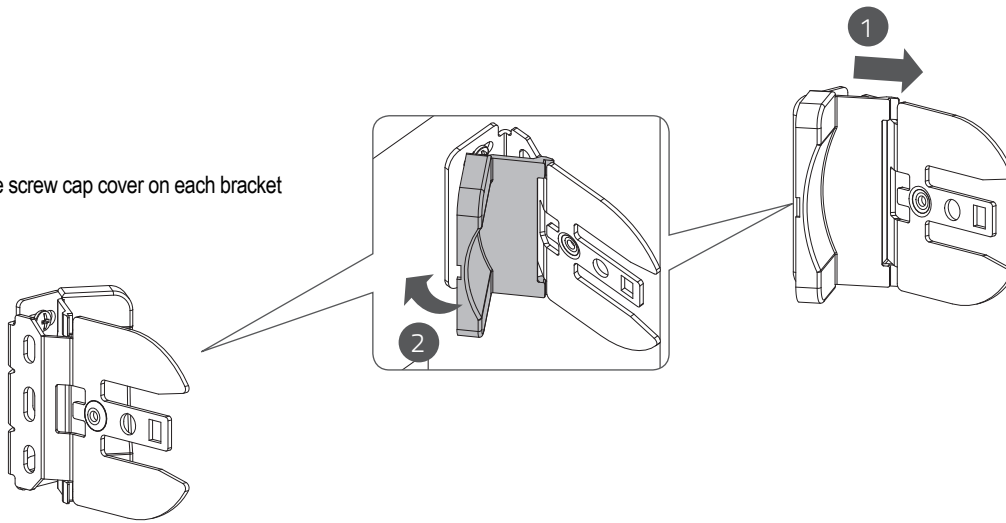
- Recommend you pre-drill the screw holes using a 5/64" drill bit where you marked the screw locations
- Mount the brackets using 2 screws for each bracket



Installation - Open Roll with Cordless

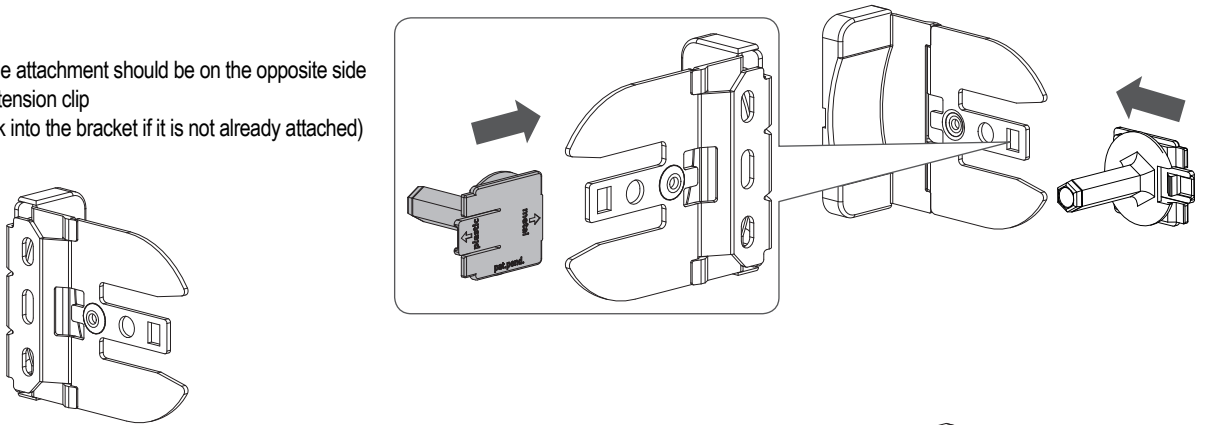
Step Three:

- Attach the screw cap cover on each bracket



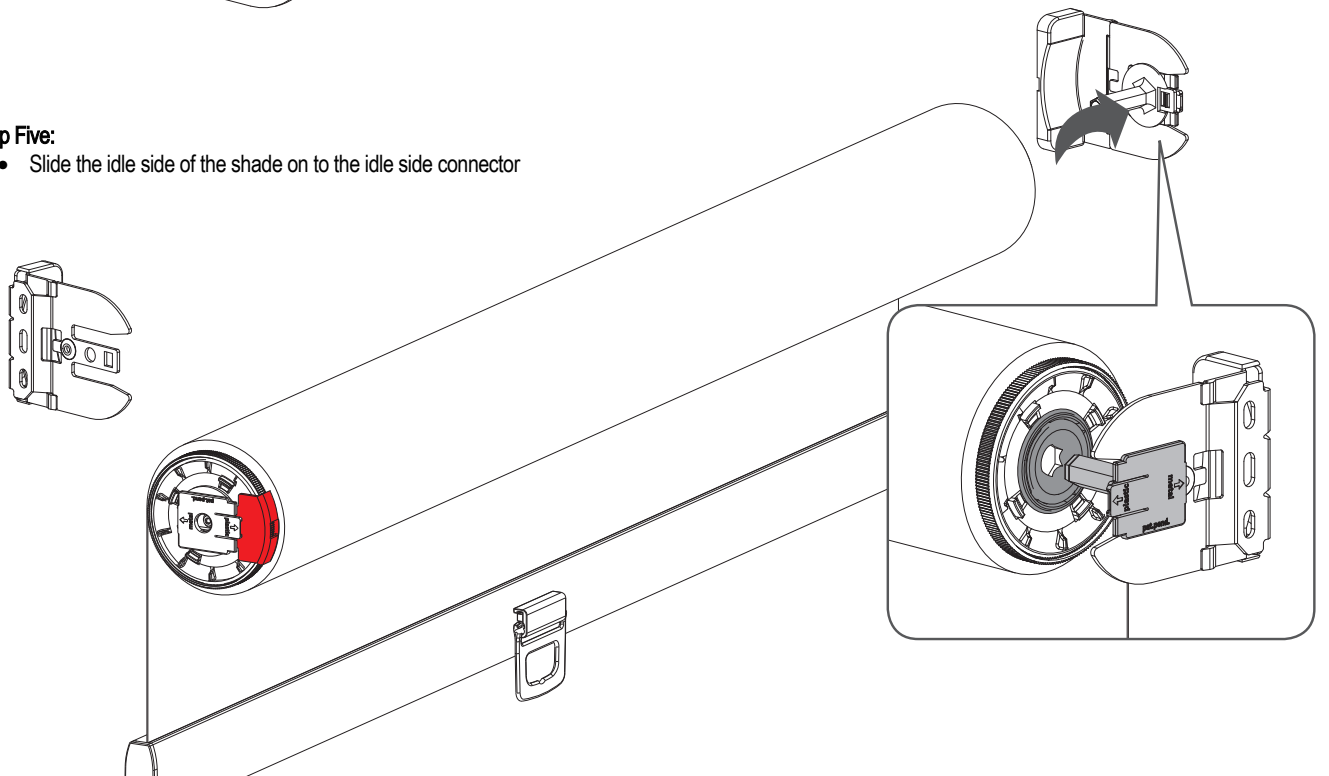
Step Four:

- The idle side attachment should be on the opposite side of the **Red** tension clip (simply click into the bracket if it is not already attached)



Step Five:

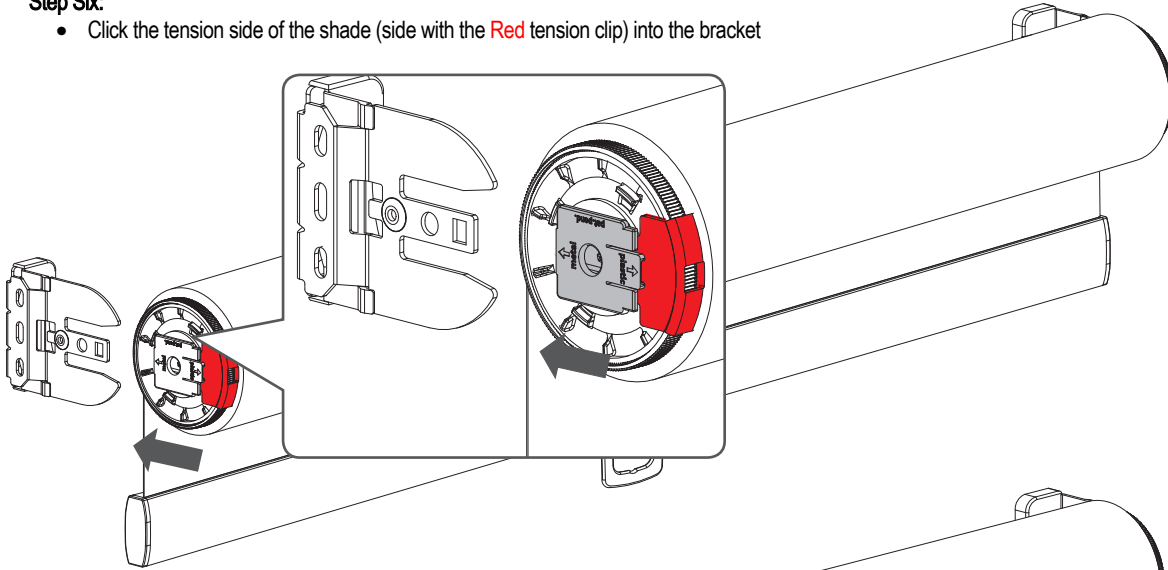
- Slide the idle side of the shade on to the idle side connector



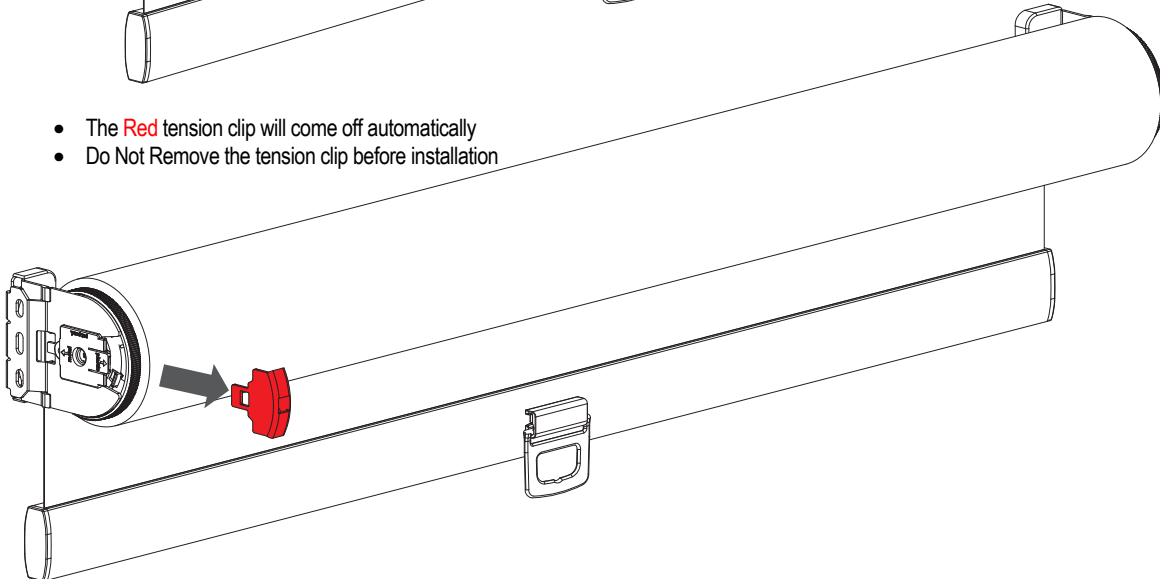
Installation - Open Roll with Cordless

Step Six:

- Click the tension side of the shade (side with the **Red** tension clip) into the bracket

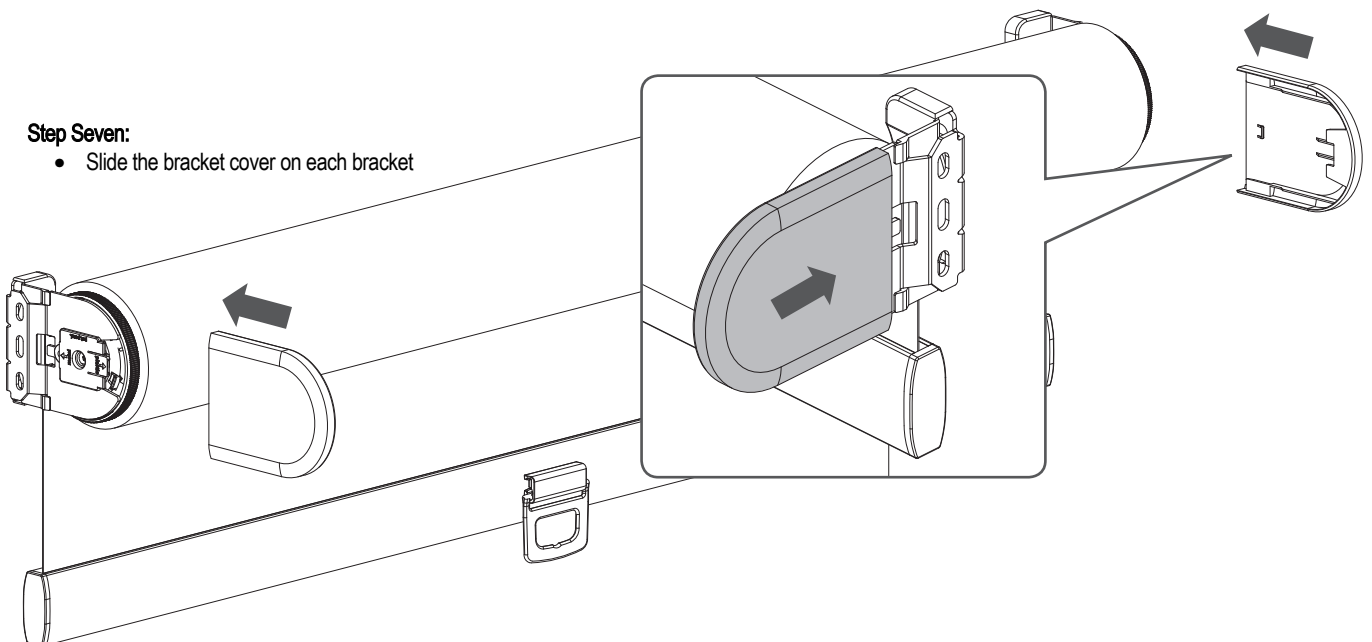


- The **Red** tension clip will come off automatically
- Do Not Remove the tension clip before installation



Step Seven:

- Slide the bracket cover on each bracket

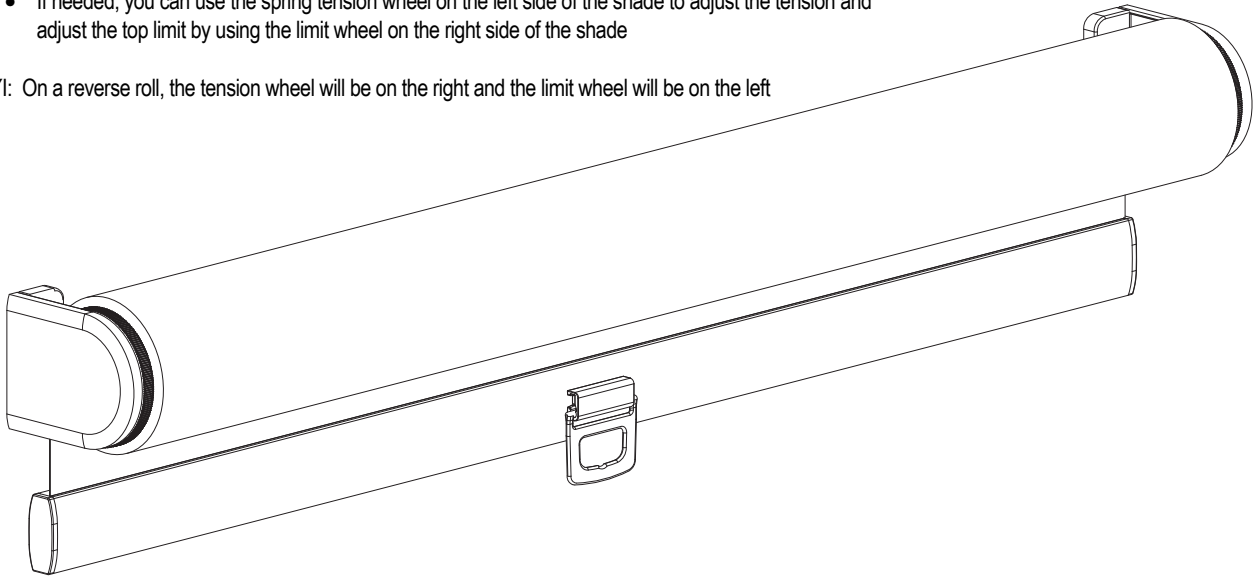


Installation - Open Roll with Cordless


Final Step:

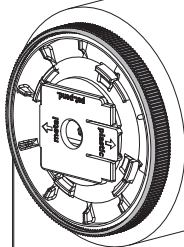
- If needed, you can use the spring tension wheel on the left side of the shade to adjust the tension and adjust the top limit by using the limit wheel on the right side of the shade


FYI: On a reverse roll, the tension wheel will be on the right and the limit wheel will be on the left

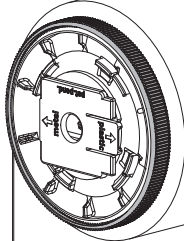


i Adjust spring tension


 Add tension

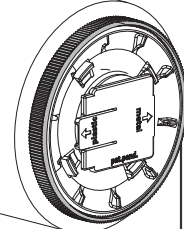




 Lower tension

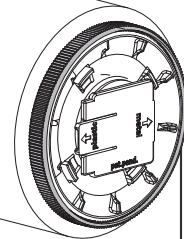


i Adjust top limit


 Raise



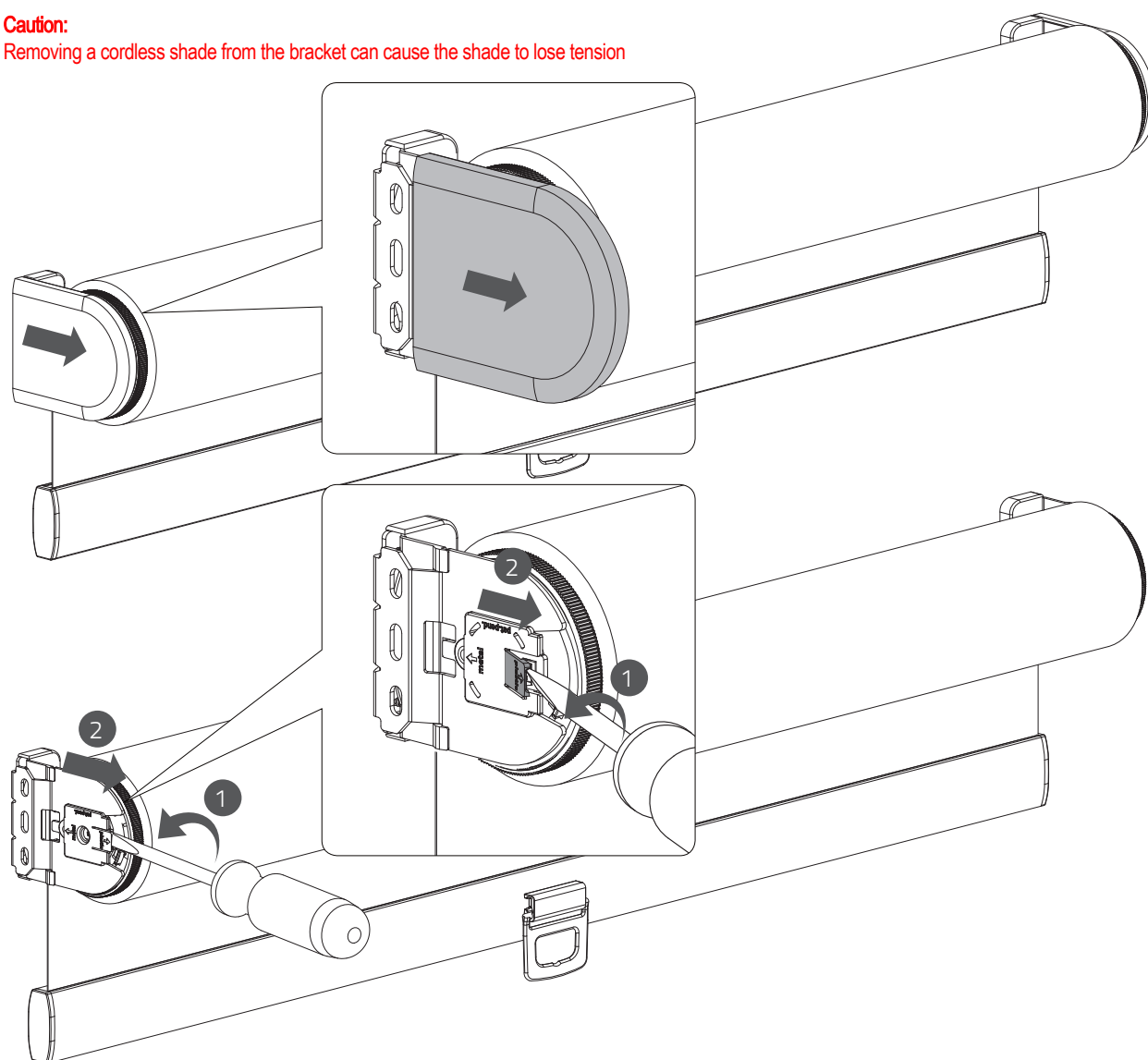

 Lower



Removal - Open Roll with Cordless

Caution:

Removing a cordless shade from the bracket can cause the shade to lose tension



Warning! loaded spring

Installation - Fabric Wrapped Cornice

Read the instructions carefully before assembling and using the product.
Assembling process can be completed by non-professionals. For indoor use only.

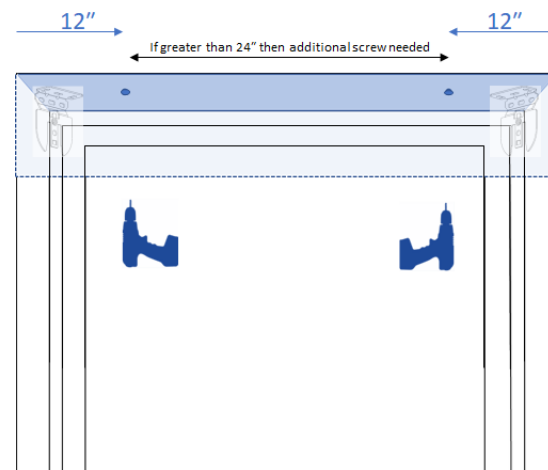
CORNICE INSTALLATION

INSIDE MOUNT

NOTE:

The brackets for your shade will come installed on the cornice (if the cornice and shade are ordered together).
Install cornice before installing the shade.

1. Hold the cornice to the top of your window frame and set it back until it is flush with your wall or until it is touching the back of the window opening. Be sure the cornice is centered in the opening.
2. Predrill holes through the cornice for your screws:
 - a. 12" maximum from each side
 - b. Space between screws should not exceed 24"
3. Secure your cornice to the window by screwing through each hole you predrilled.
4. Once the cornice is mounted, you can then install the shade.



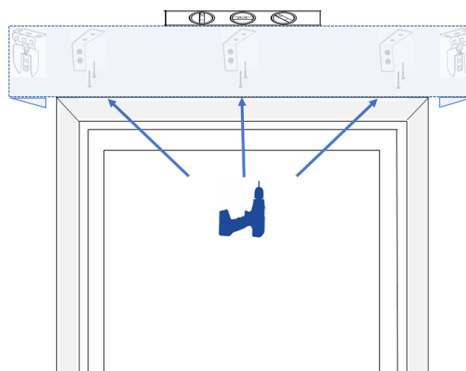
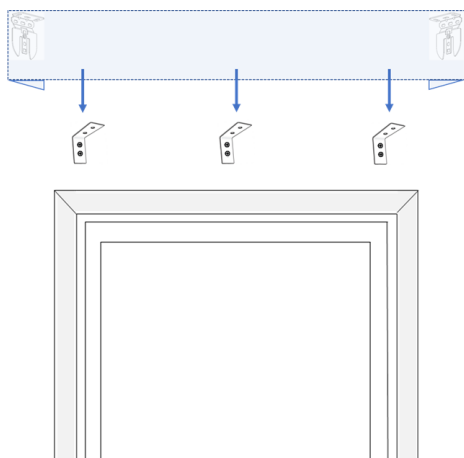
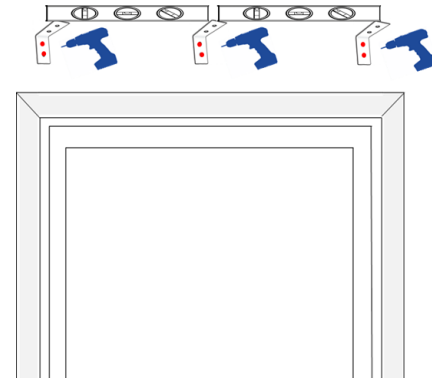
CORNICE INSTALLATION

OUTSIDE MOUNT

NOTE:

The brackets for your shade will come installed on the cornice (if the cornice and shade are ordered together).
Install cornice before installing the shade.

1. Make sure the surface you intend to install your cornice hardware is sturdy enough to support the brackets. You will need to screw into wood studs that are strong enough to securely bond with the included screws or you will need to use fasteners to securely support the brackets. Please note secure fasteners are not included.
2. Center the cornice over the window opening at your desired height. Mark the position of the ends of the cornice on the wall. Measure in 6" from each end and using the cornice bracket mark the screw holes with a pencil. If you have additional cornice brackets, space them evenly between the outer brackets. Make sure all the mounting brackets are level with one another.
3. Pre-drill the holes for each cornice bracket and then secure the brackets to your mounting surface.
4. Place the cornice on top of the brackets and center it to the window. Check again that the cornice is level. Hold the cornice in place and screw through the top of each bracket into the cornice.
5. Once the cornice is secured to each bracket, then you can install the shade.

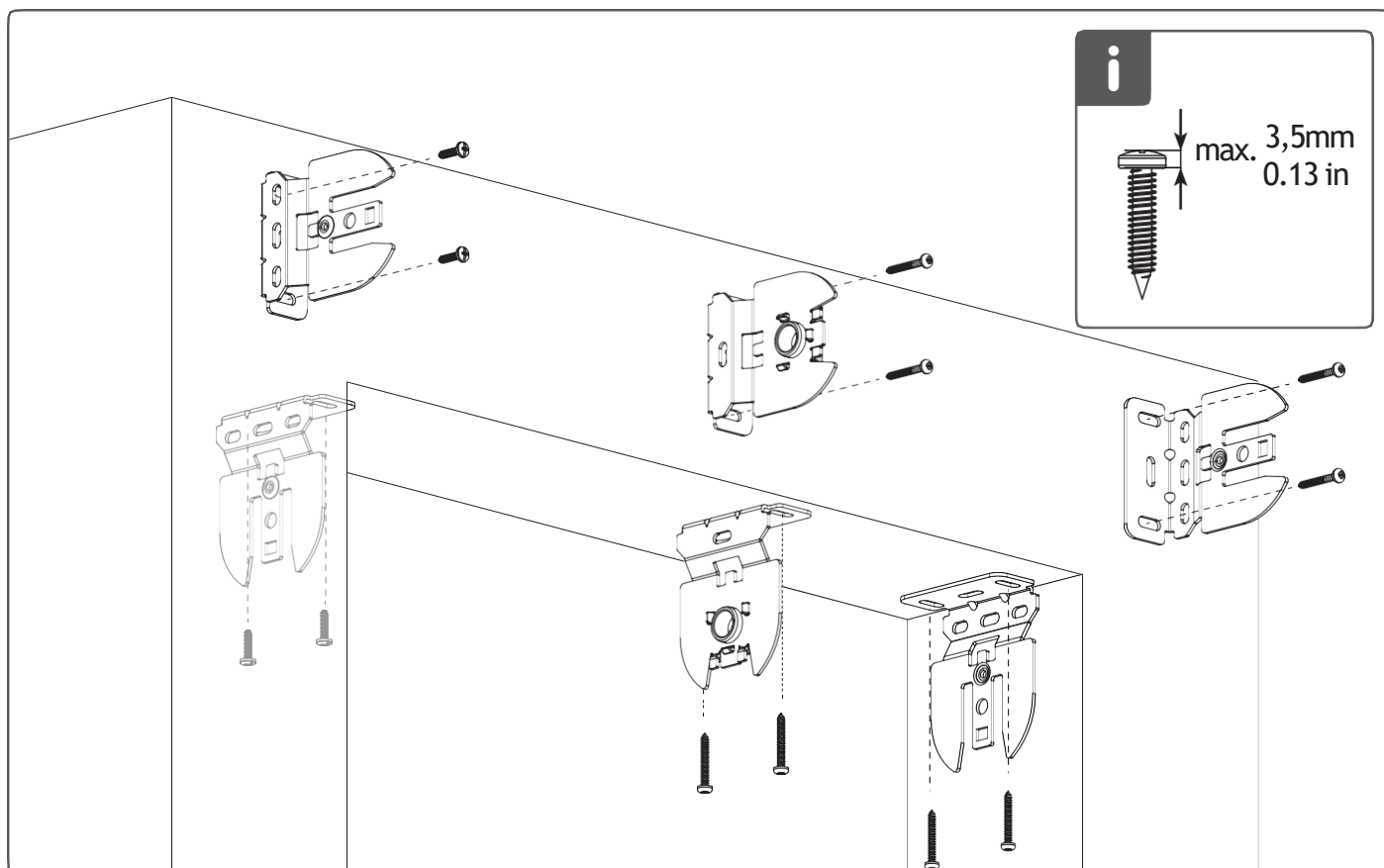
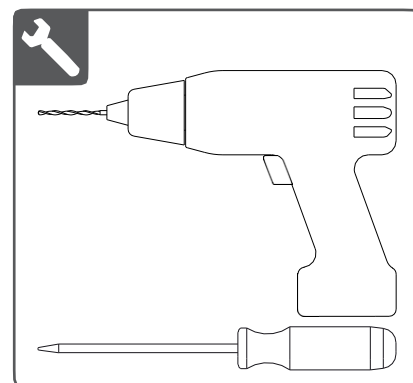
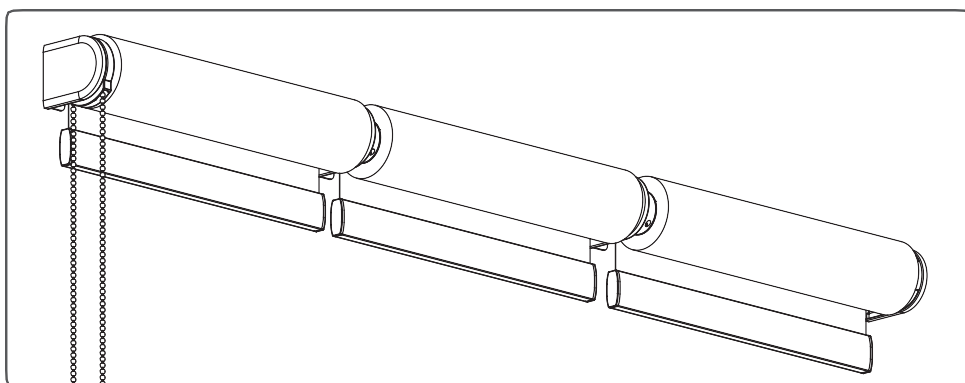
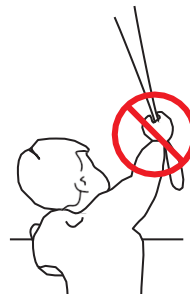


Installation - Intermediate Brackets

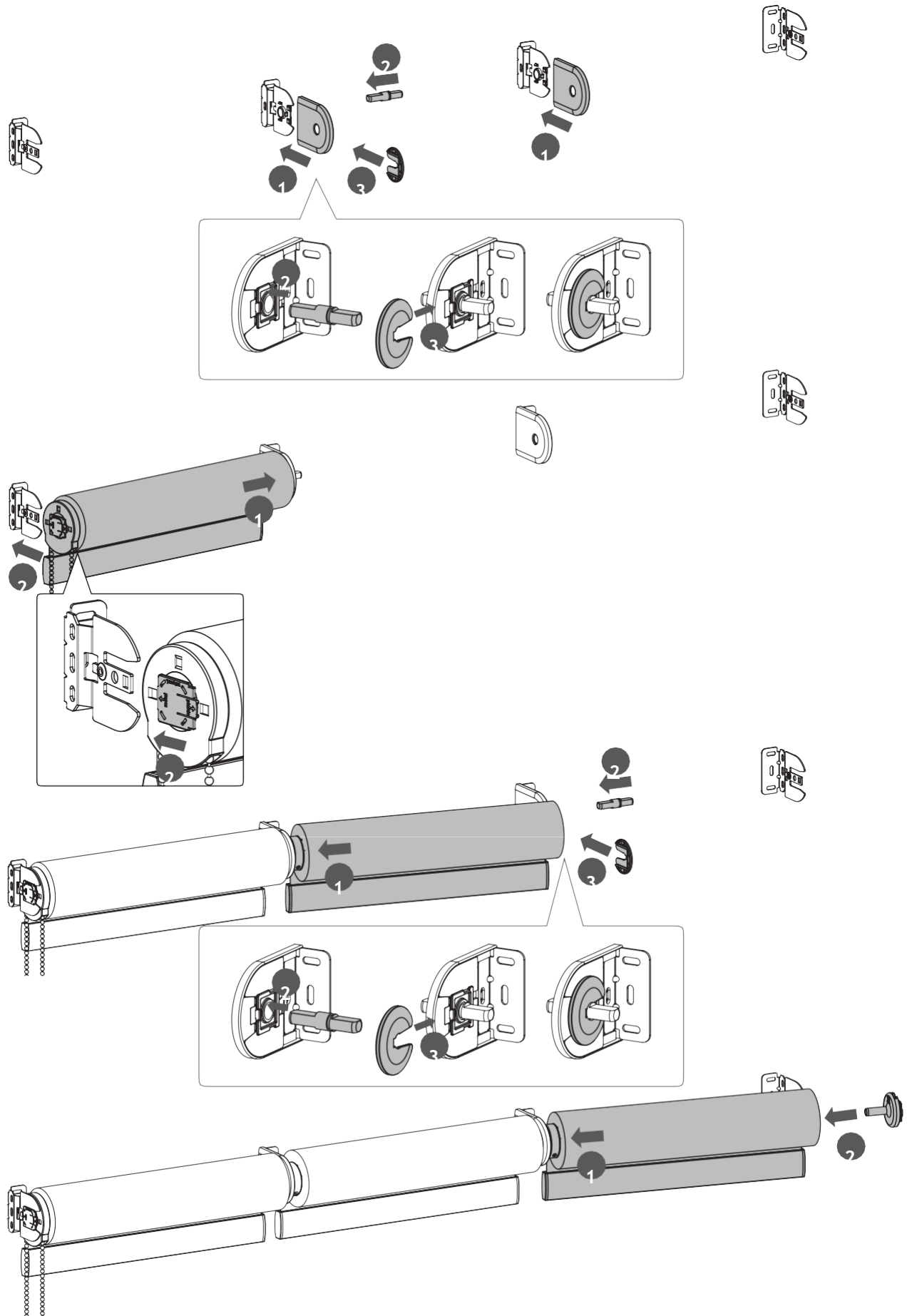
Read the instructions carefully before assembling and using the product.
Assembling process can be completed by non-professionals. For indoor use only.

WARNING

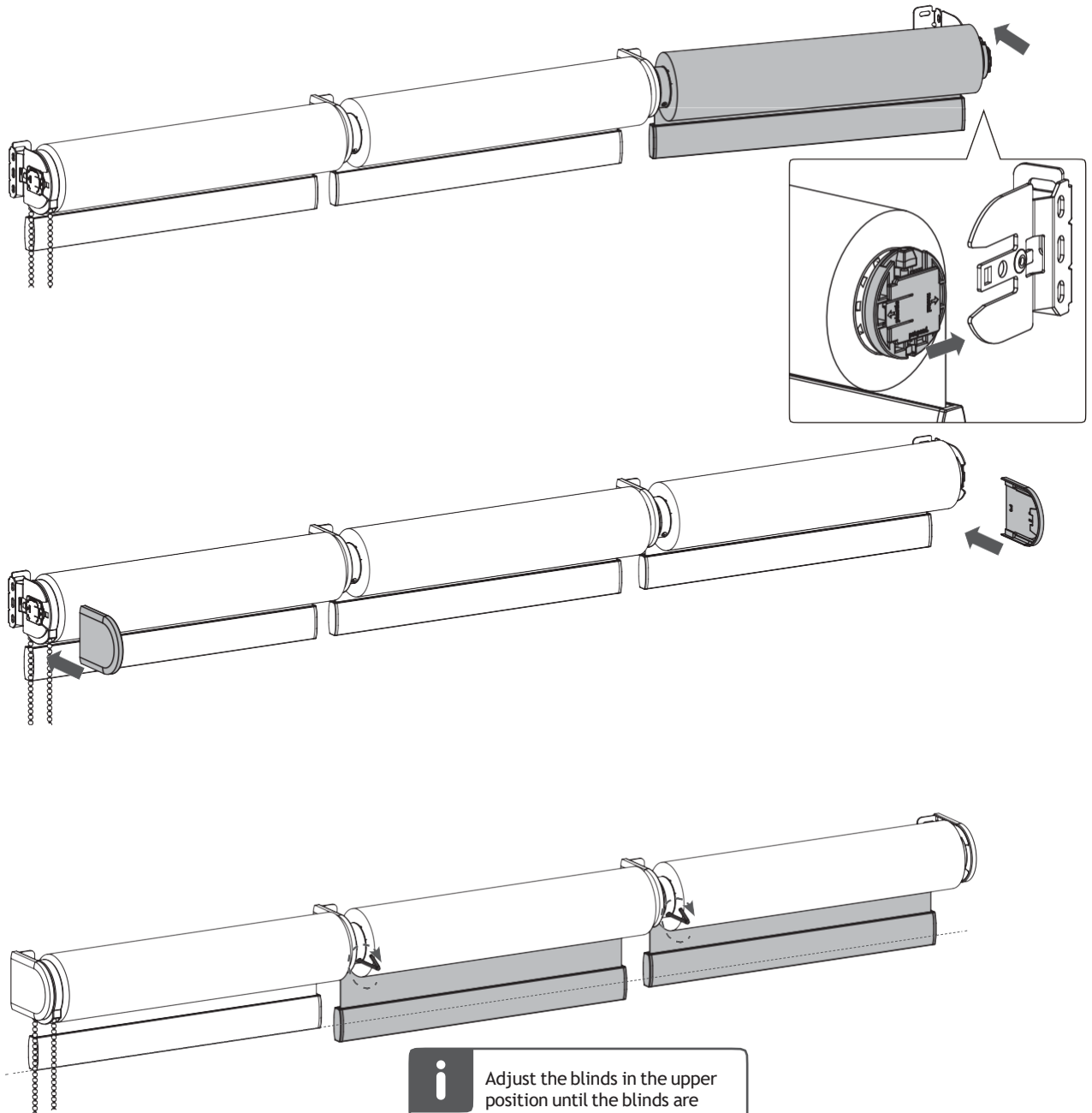
- Young children can strangle in the loop of pull cords, chains and tapes, and cords that operate window coverings.
 - To avoid strangulation and entanglement, keep cords out of the reach of young children. Cords may become wrapped around a child's neck.
 - Move beds, cots and furniture away from window covering cords.
 - Do not tie cords together.
- Make sure cords do not twist together and form a loop.



Installation - Intermediate Brackets



Installation - Intermediate Brackets



Adjust the blinds in the upper position until the blinds are aligned.

WARNING

Install the child safety device as specified in the childsafe manual.

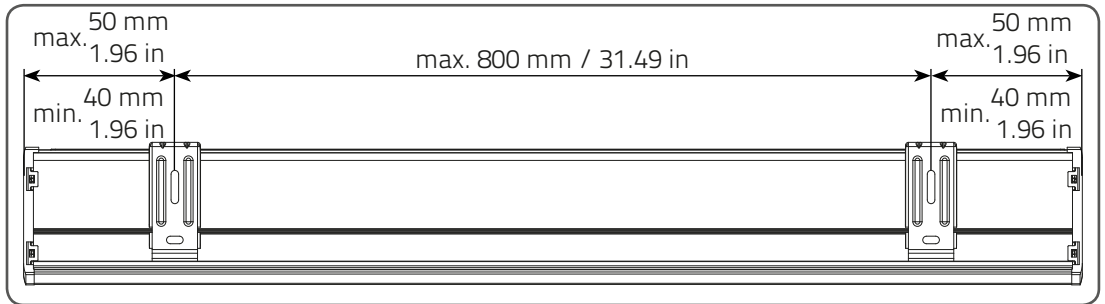
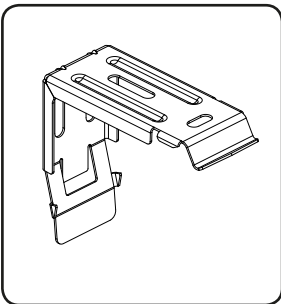
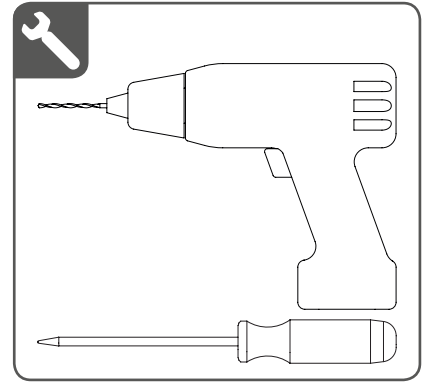
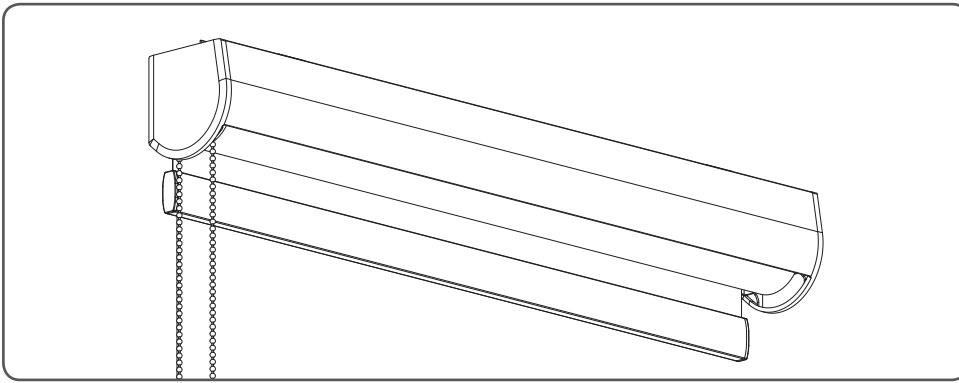
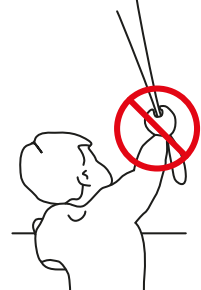


Installation - Semi-Open Cassette with Continuous Chain

Read the instructions carefully before assembling and using the product. Assembling process can be completed by non-professionals. For indoor use only.

WARNING

- Young children can strangle in the loop of pull cords, chains and tapes, and cords that operate window coverings.
- To avoid strangulation and entanglement, keep cords out of the reach of young children. Cords may become wrapped around a child's neck
- Move beds, cots and furniture away from window covering cords.
- Do not tie cords together.
Make sure cords do not twist together and form a loop.



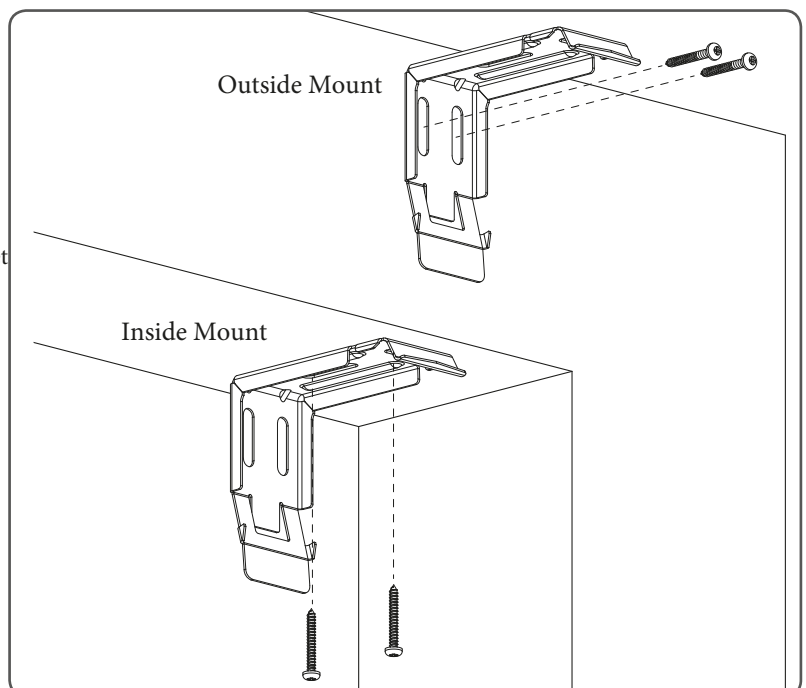
Step One:

- Use the brackets to mark the screw locations

Step Two:

- Mount the brackets using 2 screws for each bracket
- For outside mount screw through the backside of the bracket
- On inside mount screw through the top of the bracket

Note: Brackets must be level to avoid the fabric telescoping to one side which can damage the fabric.

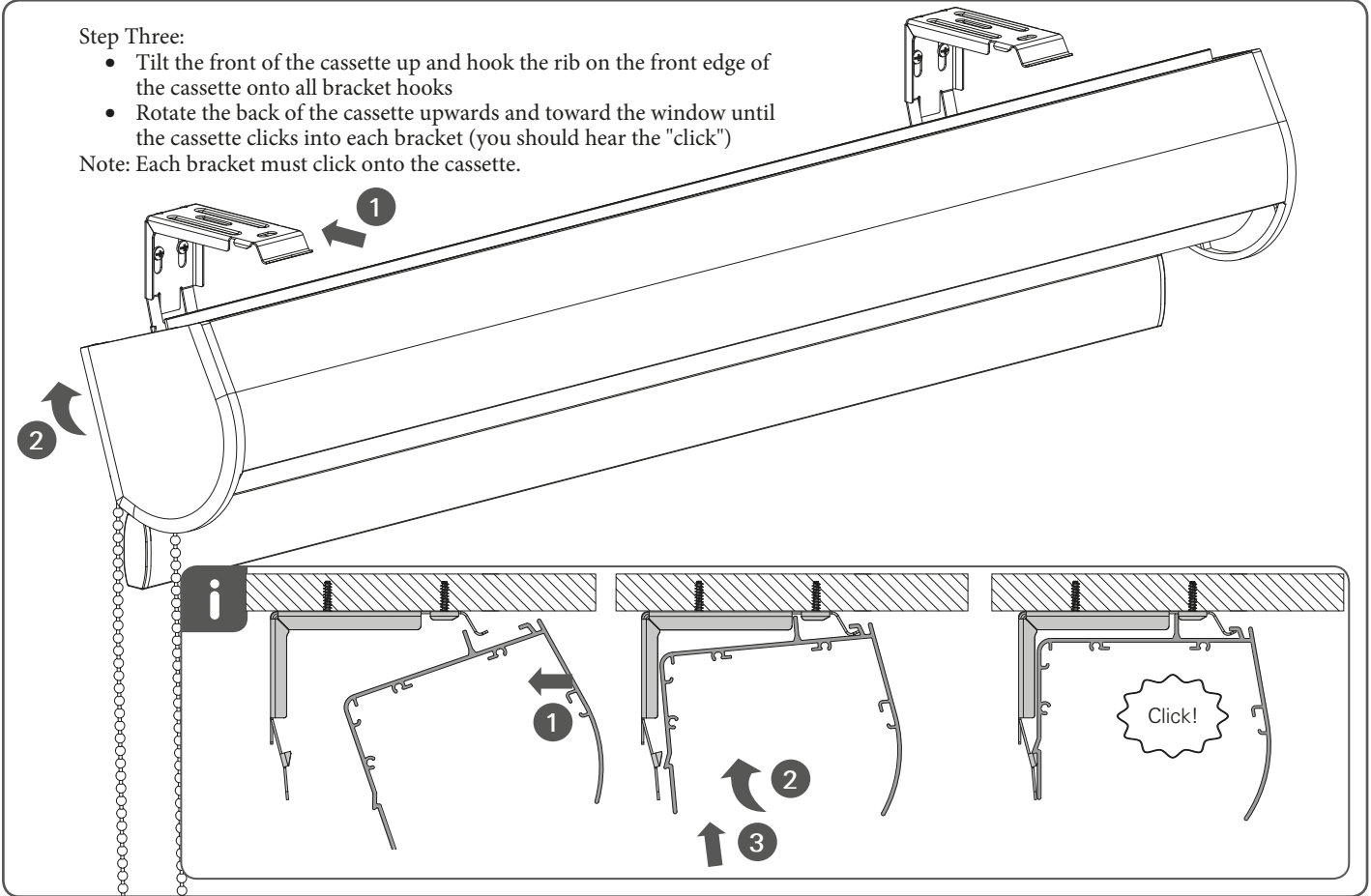


Installation - Semi-Open Cassette with Continuous Chain

Step Three:

- Tilt the front of the cassette up and hook the rib on the front edge of the cassette onto all bracket hooks
- Rotate the back of the cassette upwards and toward the window until the cassette clicks into each bracket (you should hear the "click")

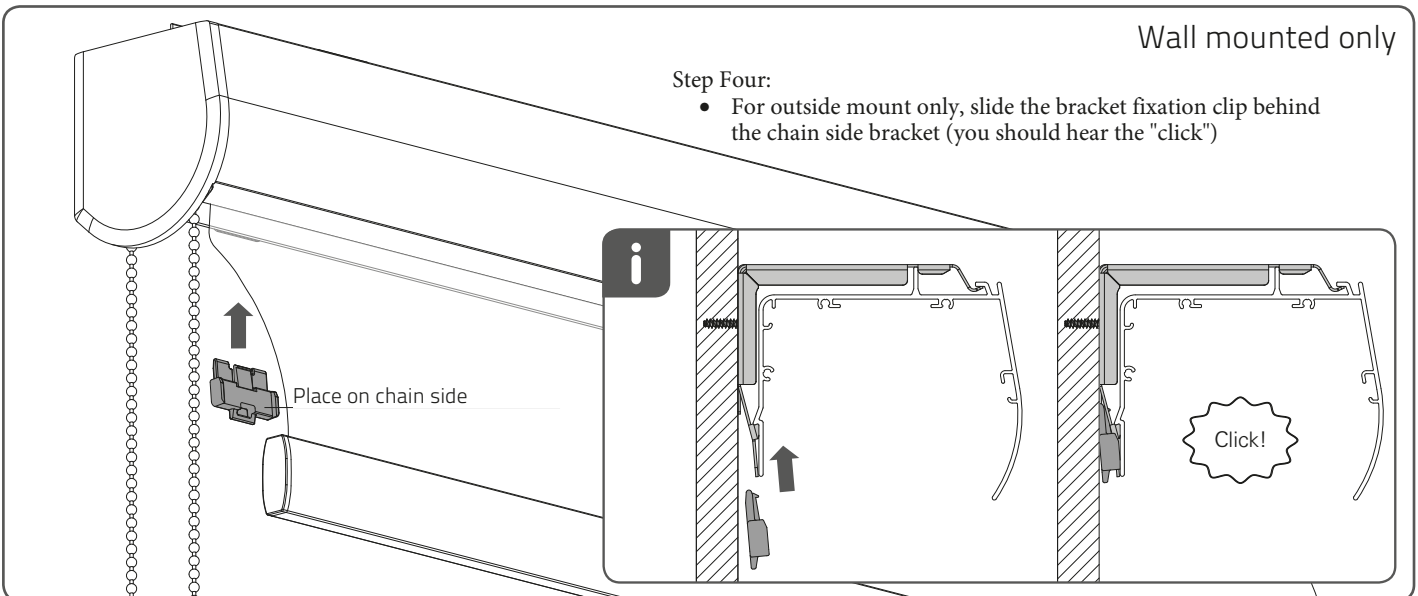
Note: Each bracket must click onto the cassette.



Wall mounted only

Step Four:

- For outside mount only, slide the bracket fixation clip behind the chain side bracket (you should hear the "click")



⚠ WARNING

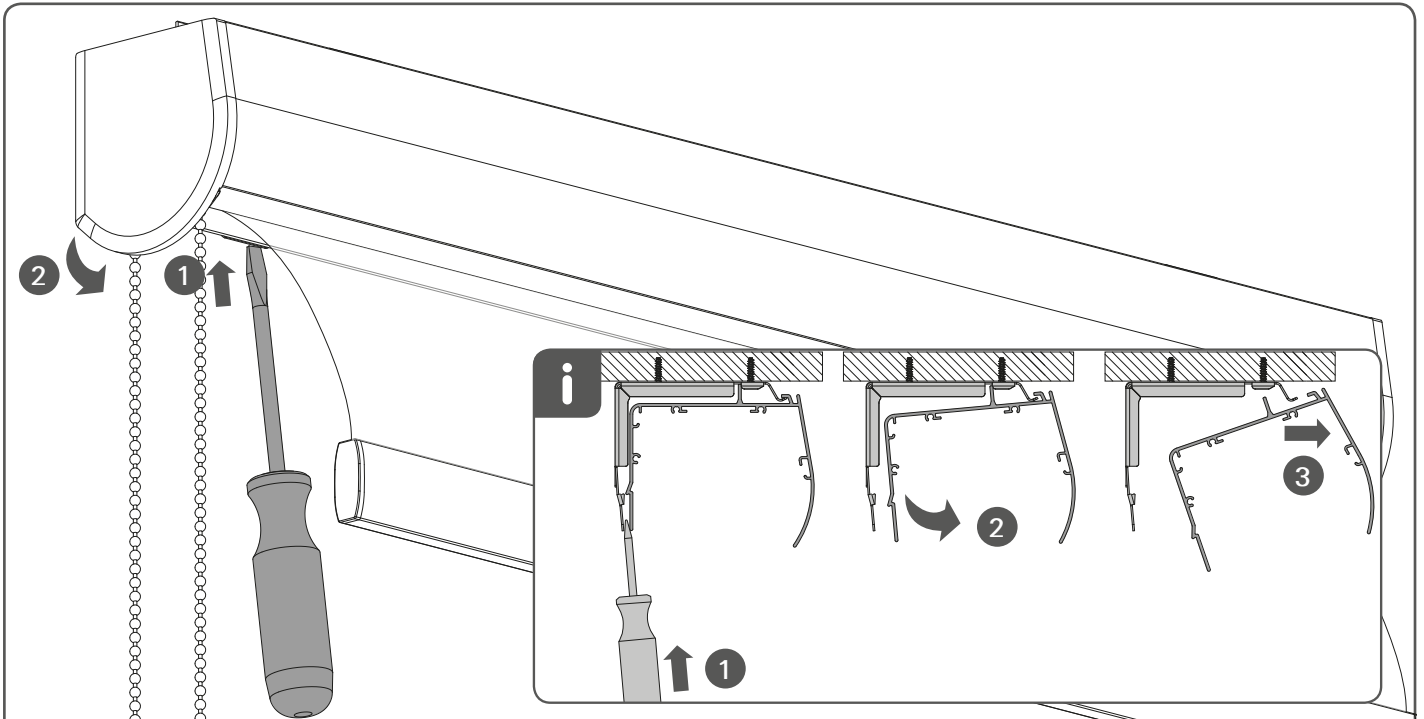
Install the child safety device as specified in the childsafe manual.



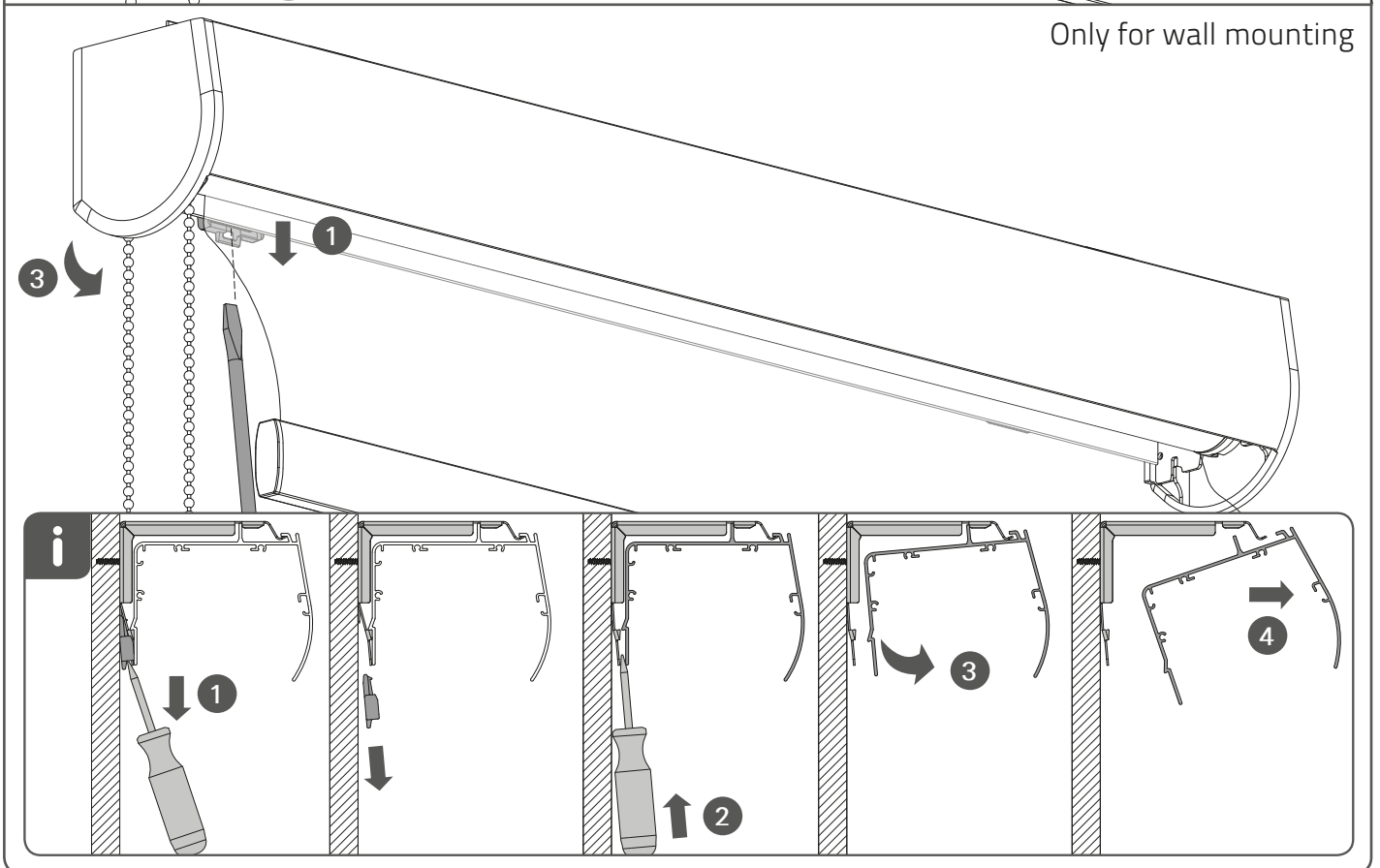
Final Step:

- Install the child safety device

Removal - Semi-Open Cassette with Continuous Chain

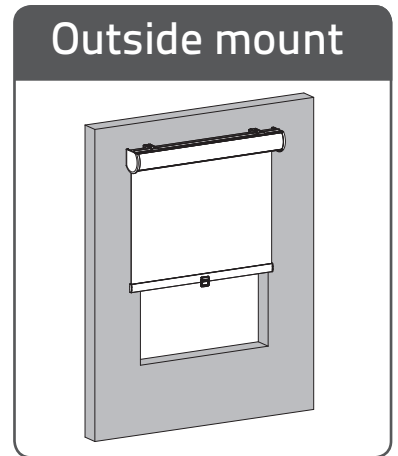
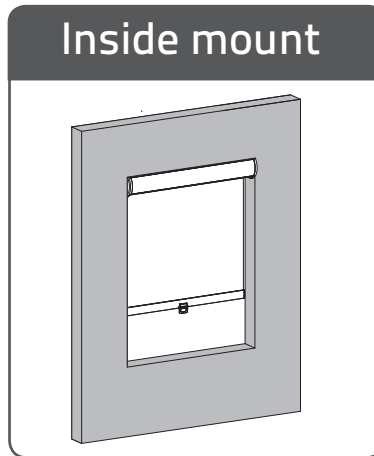
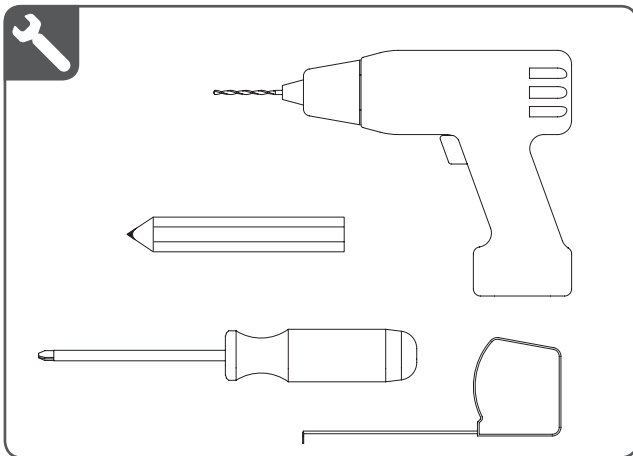
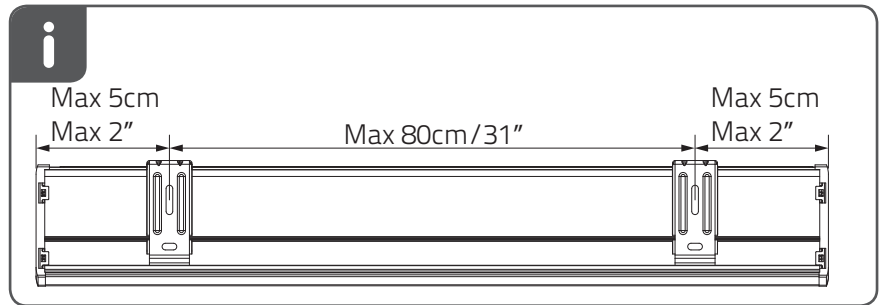
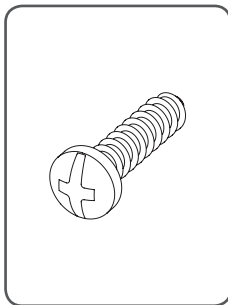
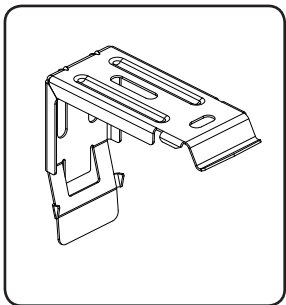
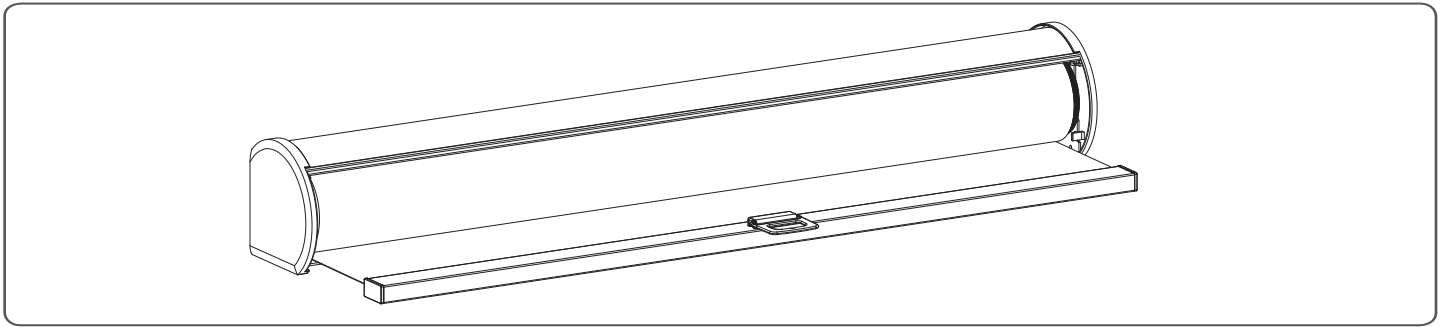


Only for wall mounting



Installation - Semi-Open Cassette with Cordless

Read the instructions carefully before assembling and using the product. Assembling process can be completed by non-professionals. For indoor use only.



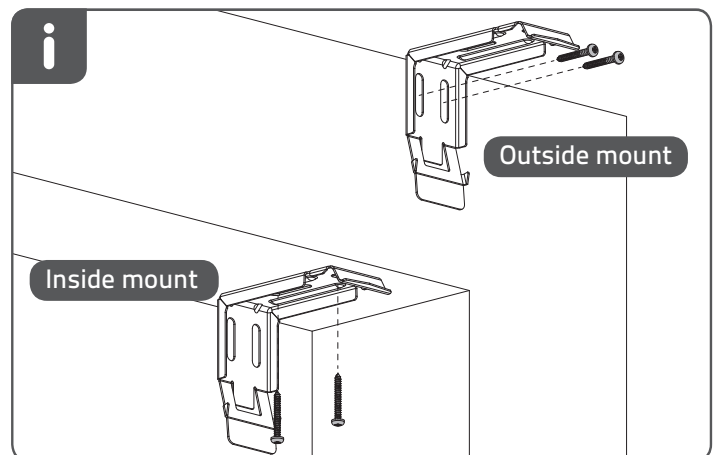
Step One:

- Use the brackets to mark the screw locations

Step Two:

- Mount the brackets using 2 screws for each bracket.
- For outside mount screw through the backside of the bracket.
- On inside mount screw through the top of the bracket

Note: Brackets must be level to avoid the fabric telescoping to one side which can damage the fabric.

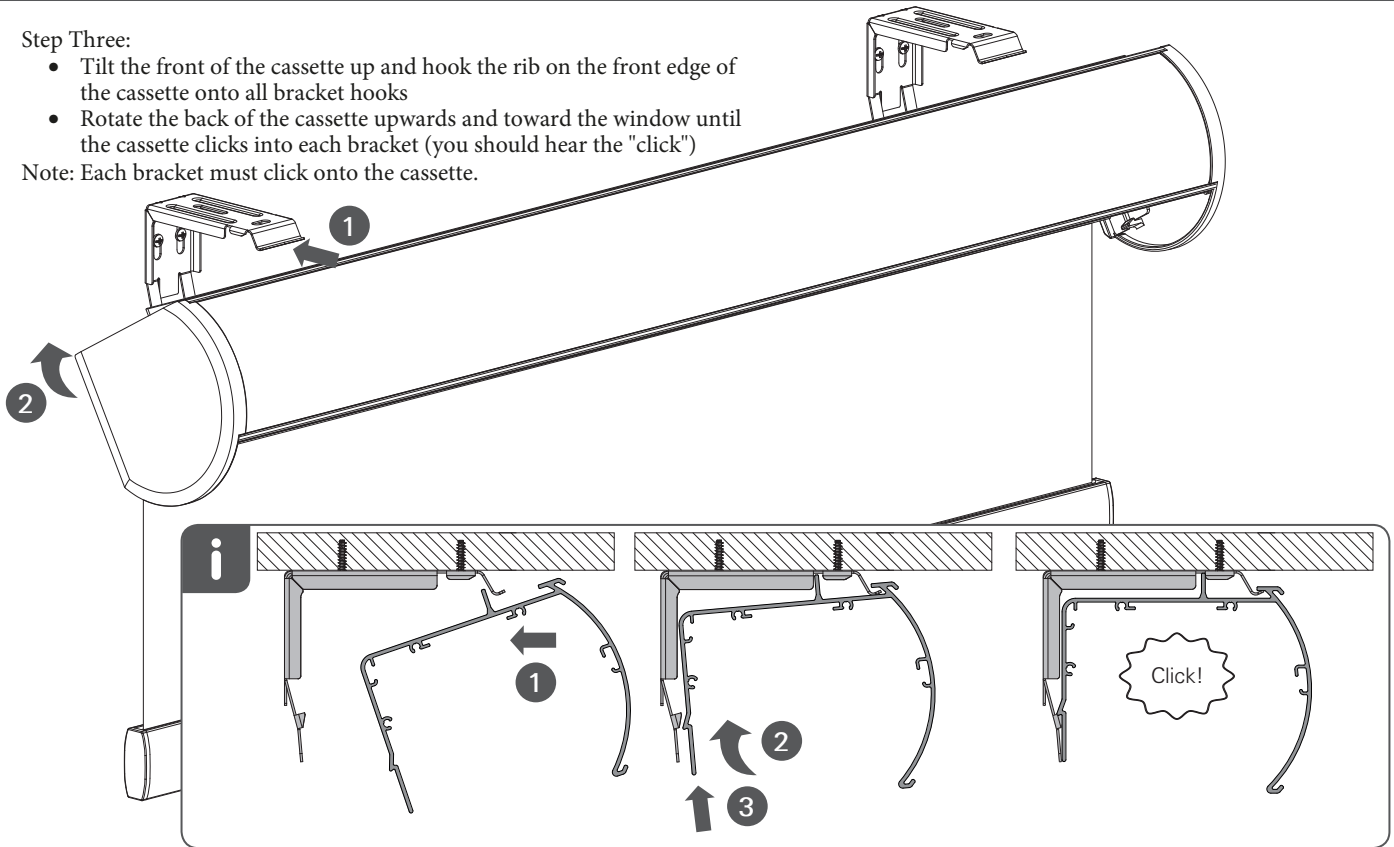


Installation - Semi-Open Cassette with Cordless

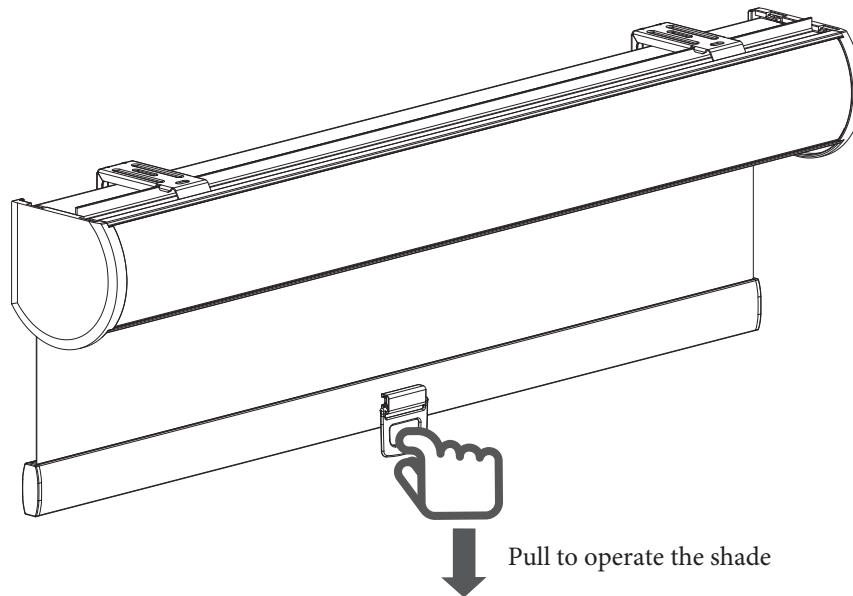
Step Three:

- Tilt the front of the cassette up and hook the rib on the front edge of the cassette onto all bracket hooks
- Rotate the back of the cassette upwards and toward the window until the cassette clicks into each bracket (you should hear the "click")

Note: Each bracket must click onto the cassette.



Operation



Adjust spring tension

Rotate to increase the lifting speed

+

Rotate to lower the lifting speed

-

Adjust top limit

Rotate to raise the bottom bar

Rotate to lower the bottom bar

i Insert the screwdriver and twist to release the cassette.

1 2

i

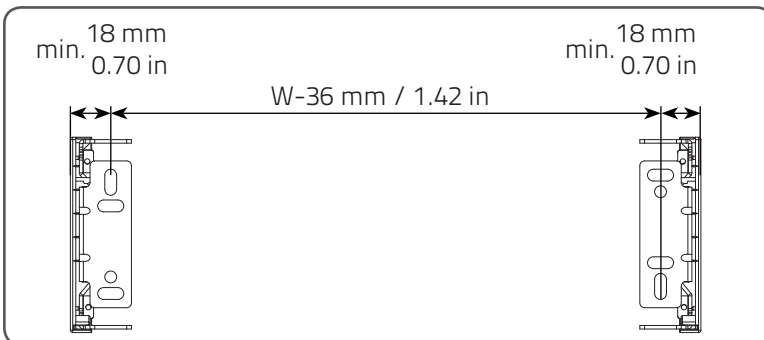
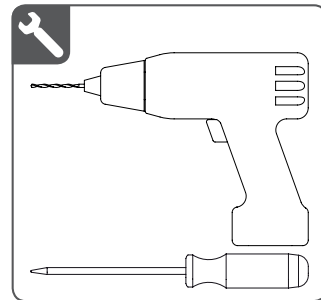
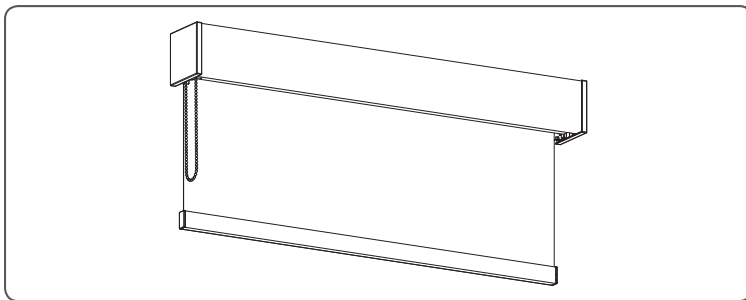
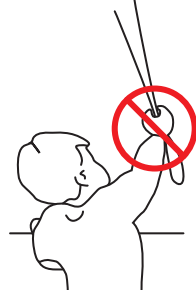
1 2 3

Installation - Fascia with Continuous Chain

Read the instructions carefully before assembling and using the product.
Assembling process can be completed by non-professionals. For indoor use only.

WARNING

- Young children can strangle in the loop of pull cords, chains and tapes, and cords that operate window coverings.
- To avoid strangulation and entanglement, keep cords out of the reach of young children. Cords may become wrapped around a child's neck
- Move beds, cots and furniture away from window covering cords.
- Do not tie cords together.
Make sure cords do not twist together and form a loop.



Step One:

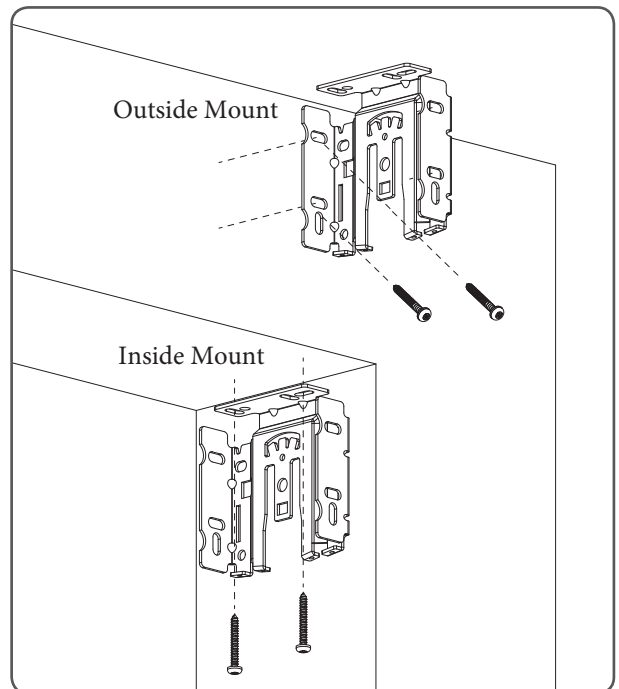
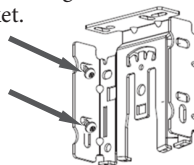
- Use the brackets to mark the screw locations
- On outside mount, make your marks so the distance from the outside edge of the bracket to the outside edge of the other bracket equals your ordered width

Note: Brackets must be level to each other for the shade to operate properly (for both inside mount and outside mount)

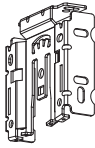
Step Two:

- Recommend you pre-drill the screw holes using a 5/64" drill bit where you marked the screw locations
- Mount the brackets using 2 screws for each bracket

Note: On outside mount, the screws will be installed on an angle. This is normal and the screws may not be flat against the bracket.

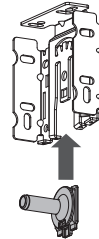


Installation - Fascia with Continuous Chain



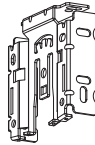
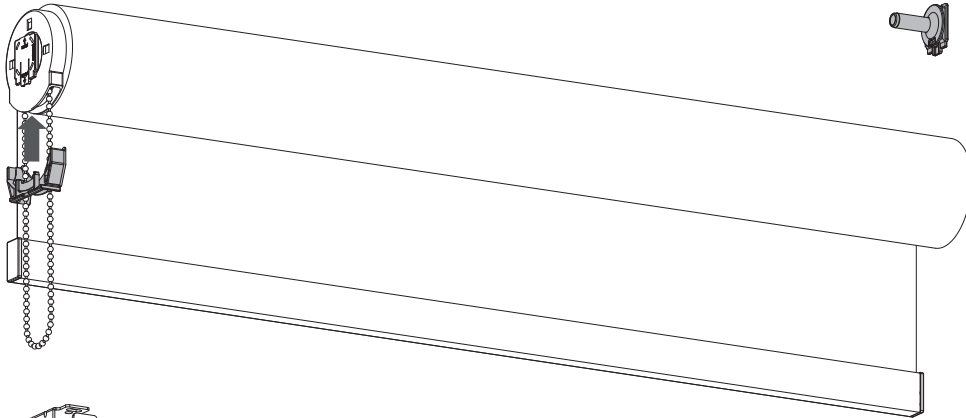
Step Three:

- The idle side attachment should be on the opposite side of the chain (simply click into the bracket if it is not already attached)



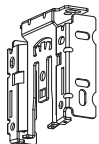
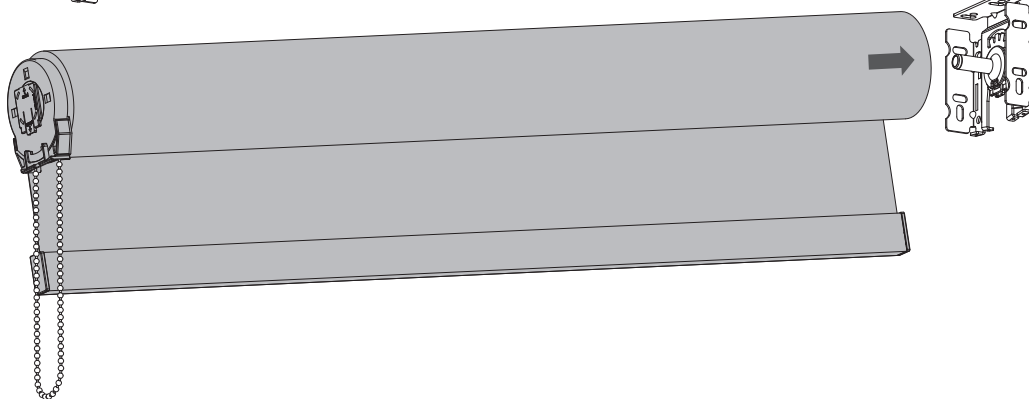
Step Four:

- Slide the chain guide onto the clutch



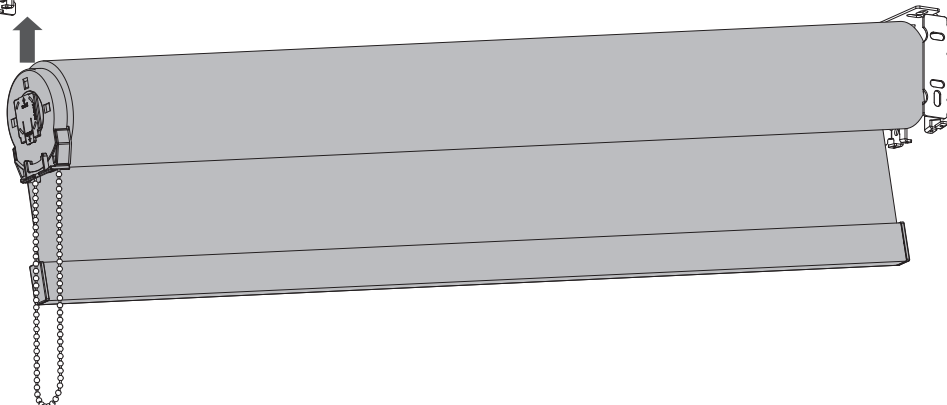
Step Five:

- Slide the idle side of the shade on to the idle side connector



Step Six:

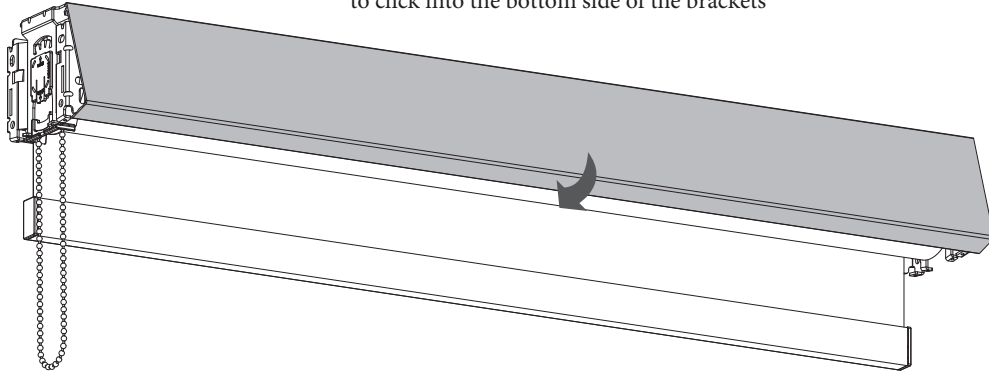
- Click the control side of the shade the bracket



Installation - Fascia with Continuous Chain

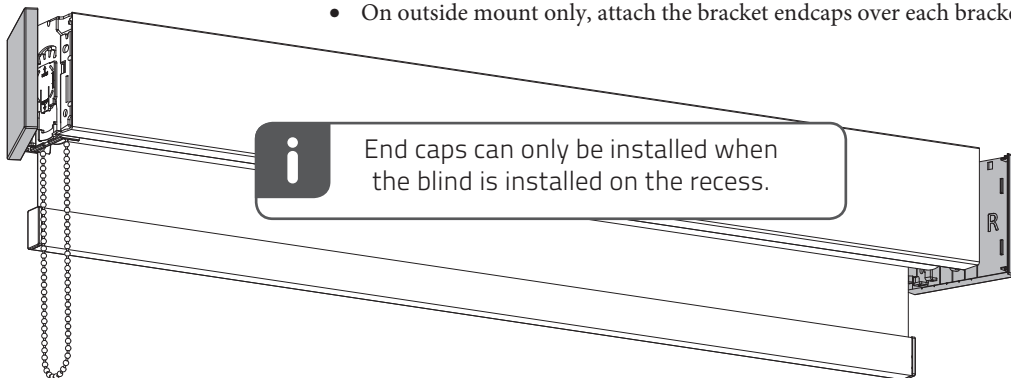
Step Seven:

- Connect the fascia to the top of the brackets and rotate it down to click into the bottom side of the brackets



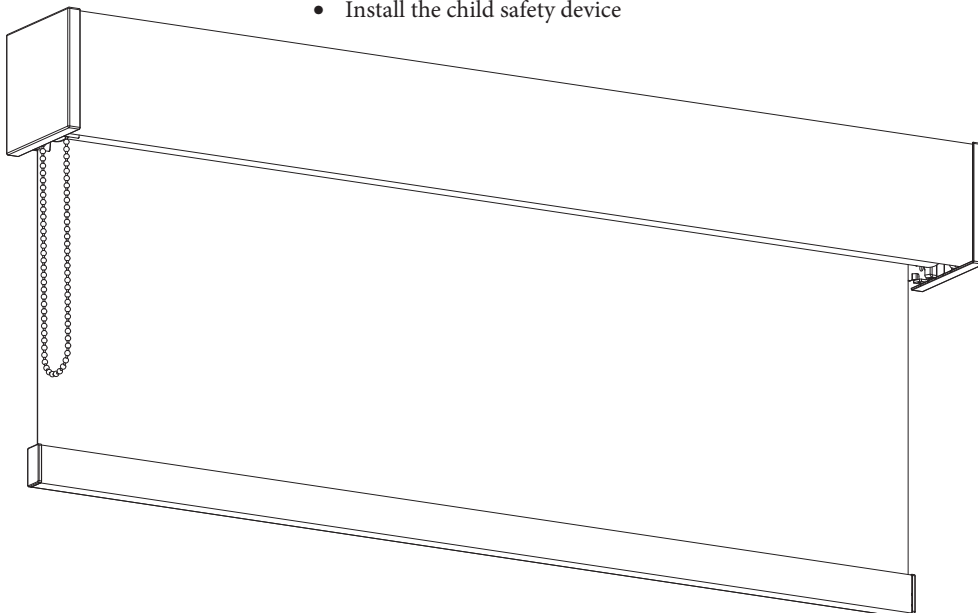
Step Eight:

- On outside mount only, attach the bracket endcaps over each bracket



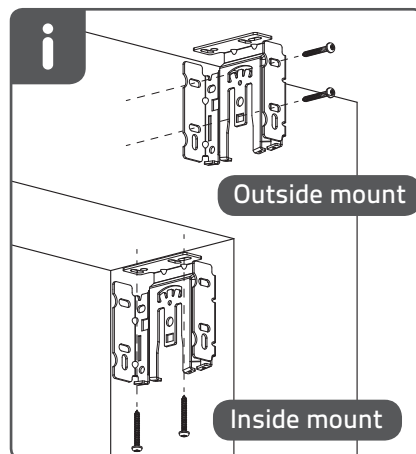
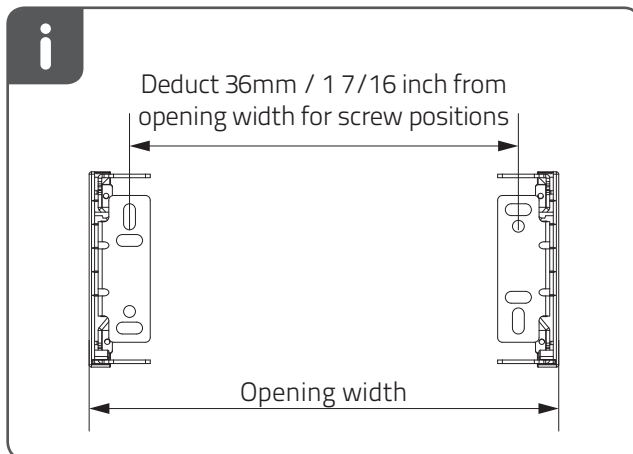
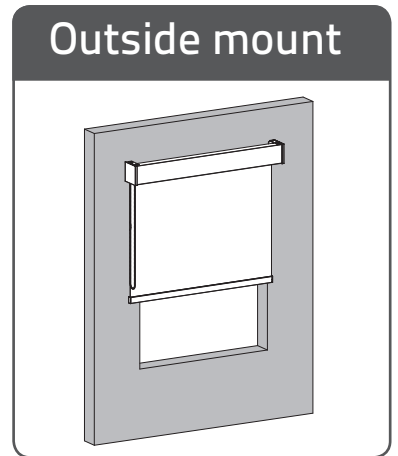
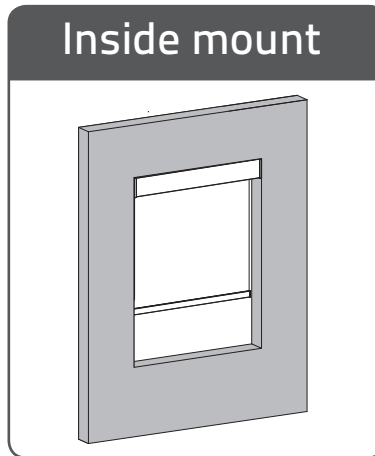
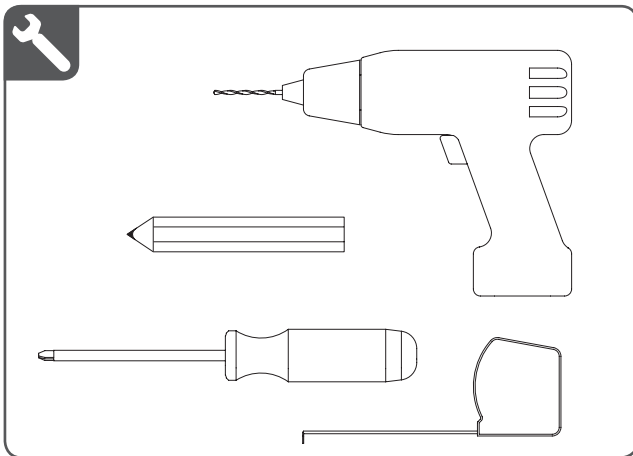
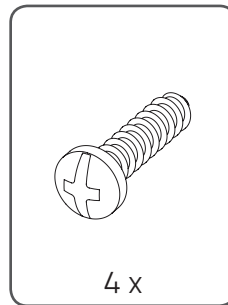
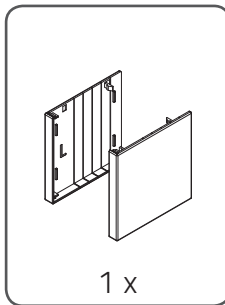
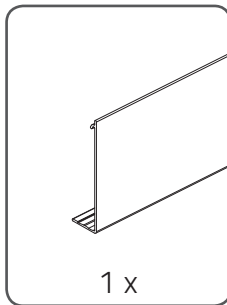
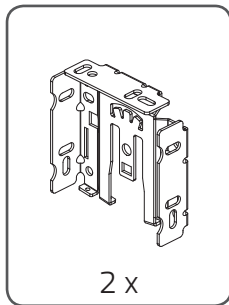
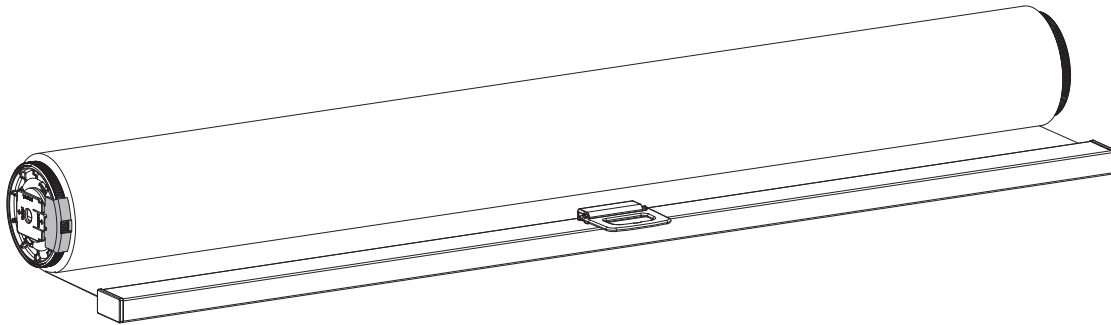
Final Step:

- Install the child safety device

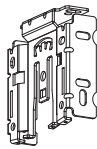


Installation - Fascia with Cordless

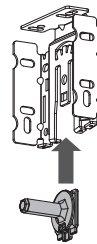
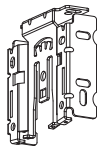
Read the instructions carefully before assembling and using the product.
Assembling process can be completed by non-professionals. For indoor use only.



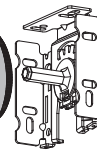
1



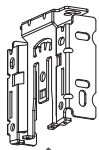
2



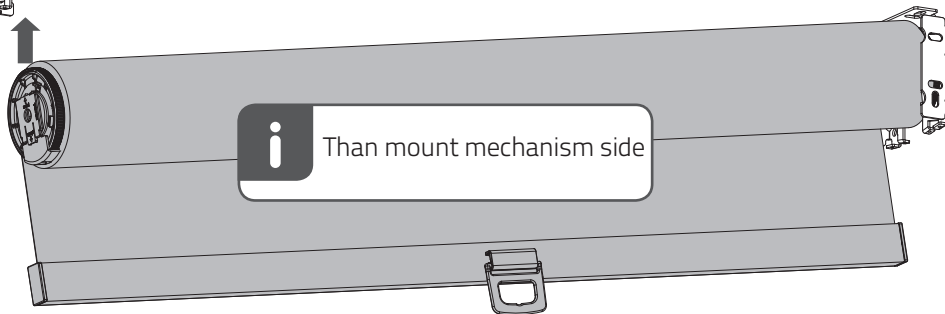
First mount pin side



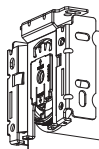
3



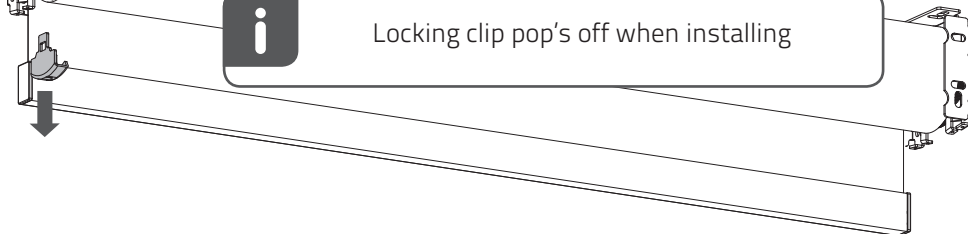
Then mount mechanism side



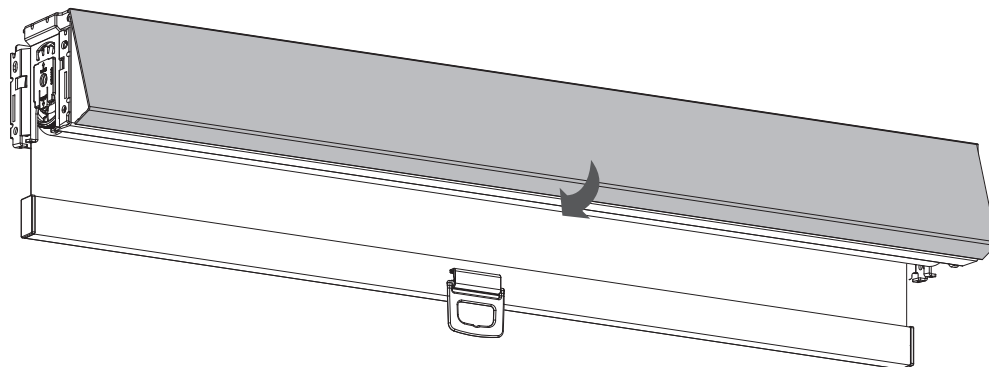
4



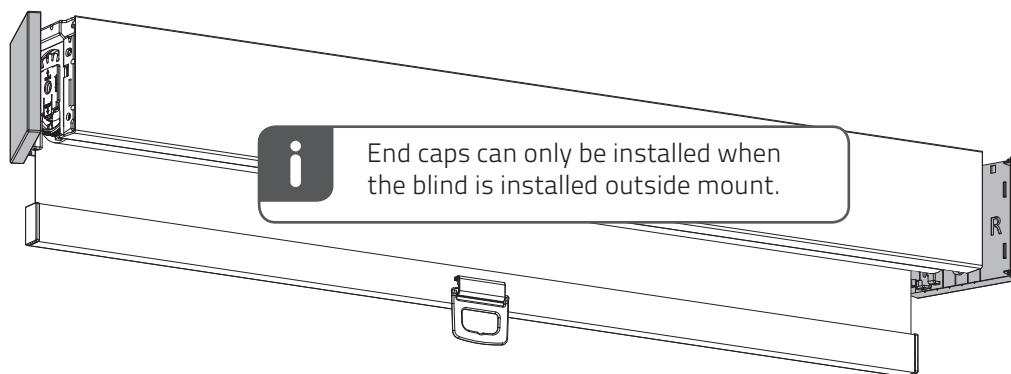
Locking clip pop's off when installing



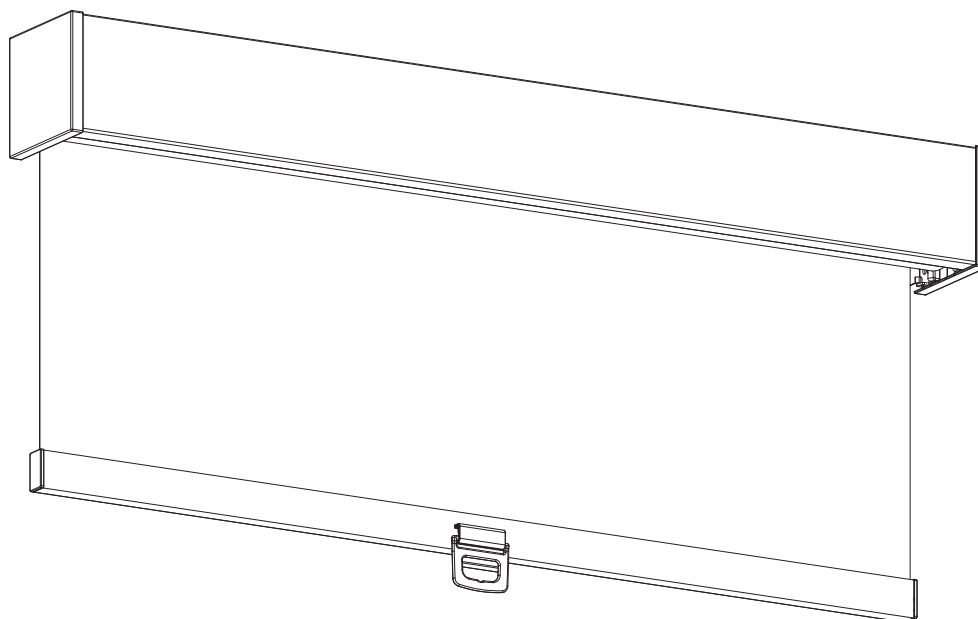
5



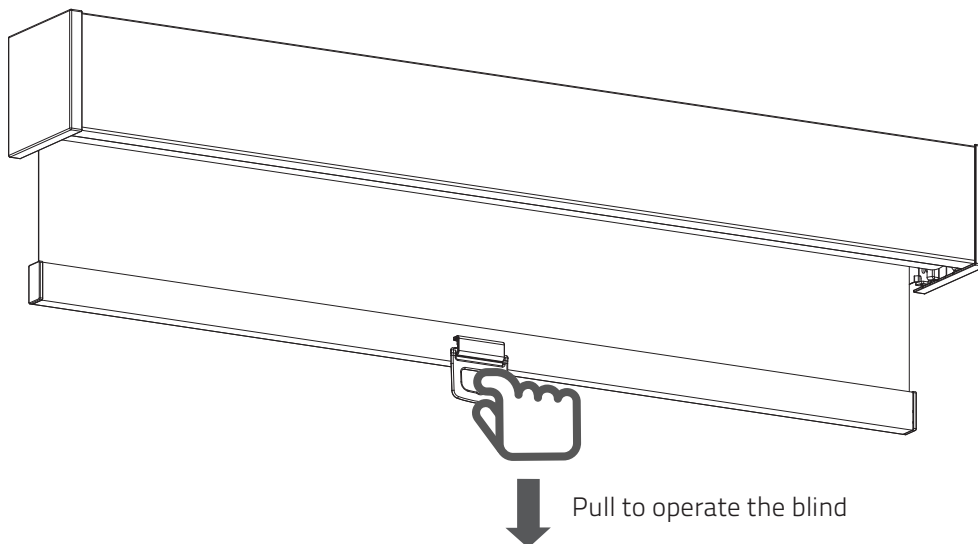
6



7

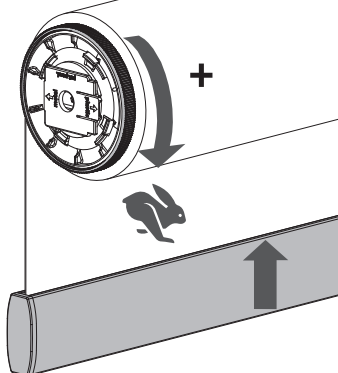


8

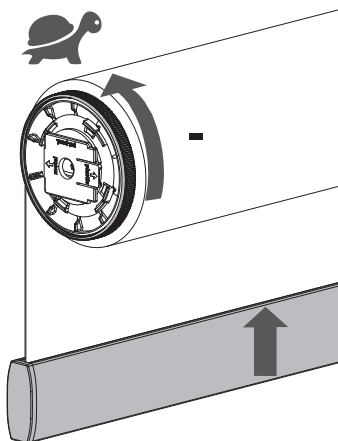


Adjust spring tension

Rotate to increase the lifting speed

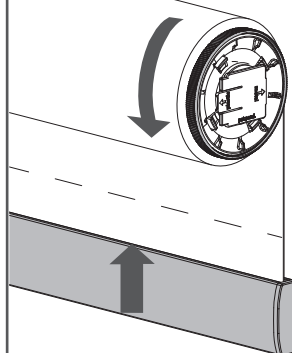


Rotate to lower the lifting speed

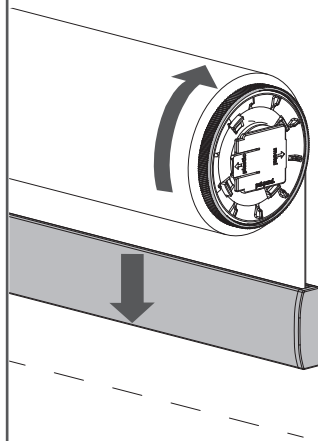


Adjust top limit

Rotate to raise the bottom bar

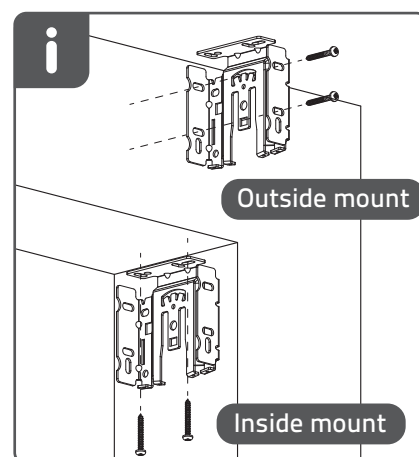
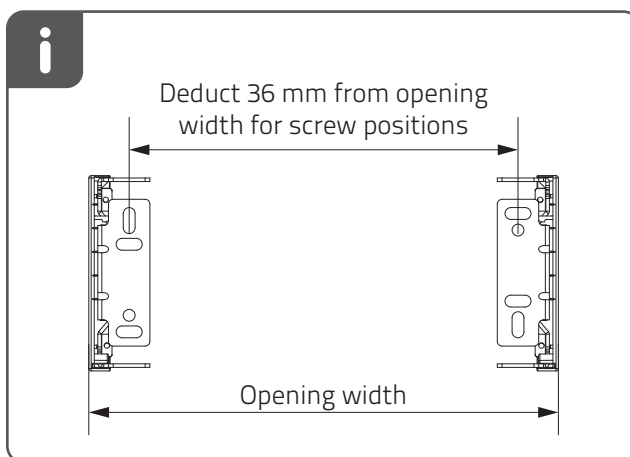
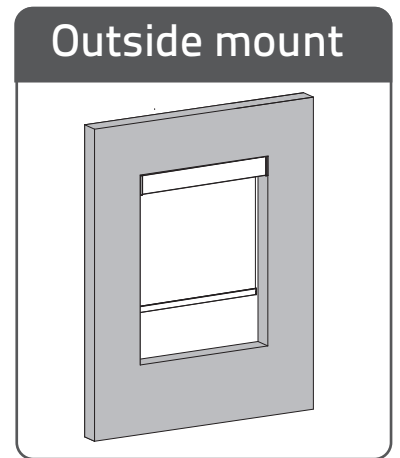
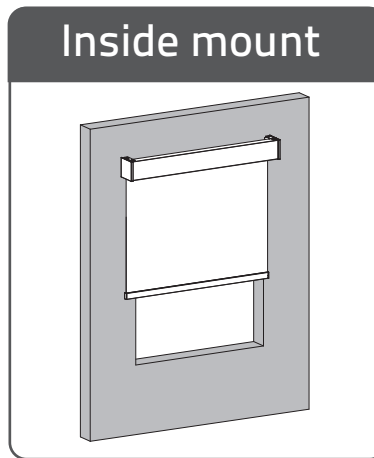
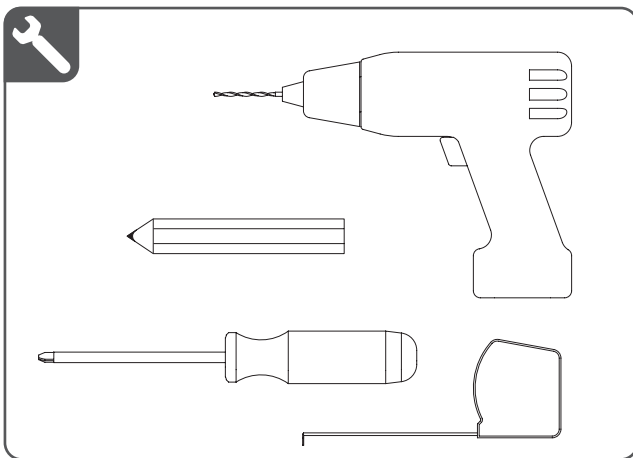
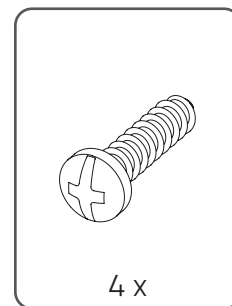
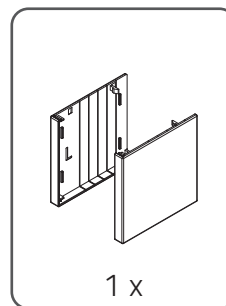
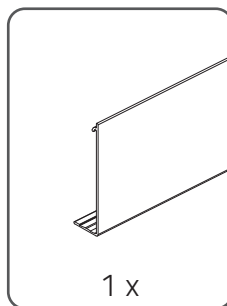
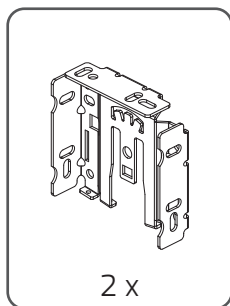
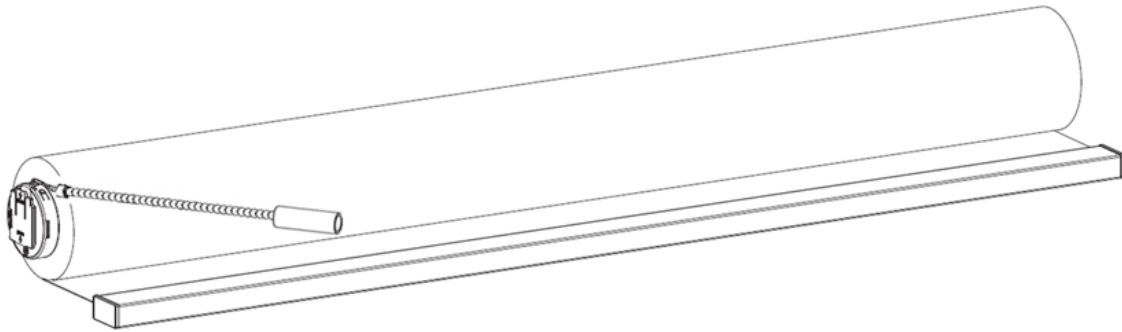


Rotate to lower the bottom bar



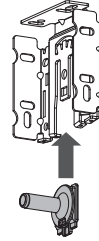
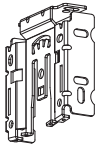
Installation - Fascia with Motorized

Read the instructions carefully before assembling and using the product.
Assembling process can be completed by non-professionals. For indoor use only.

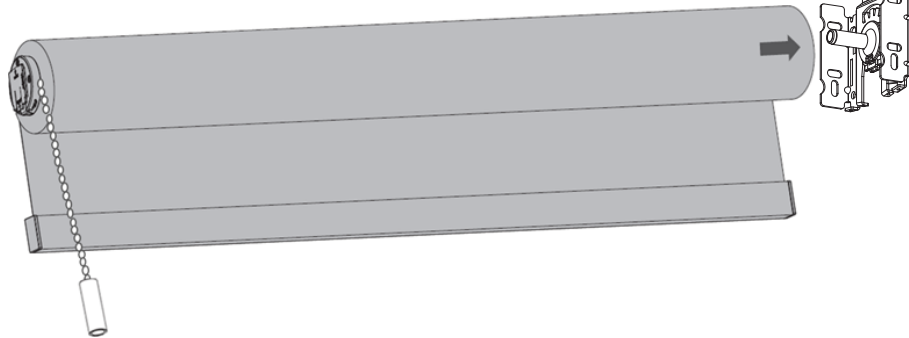
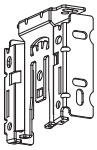


Installation - Fascia with Motorized

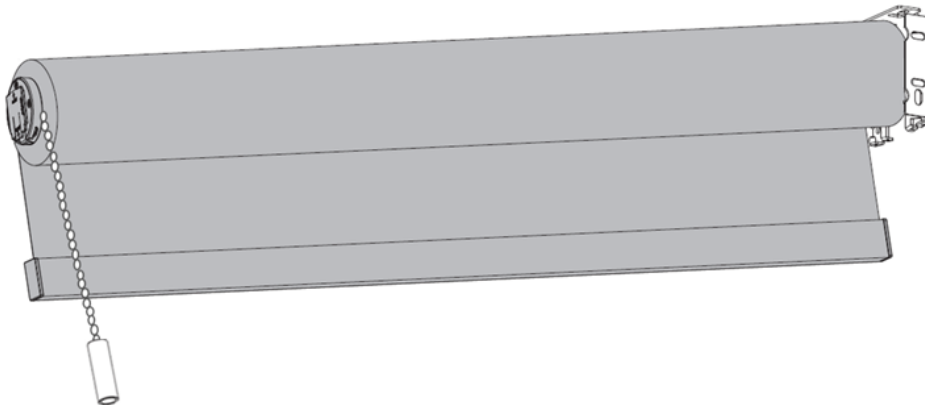
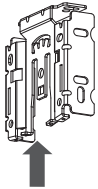
1



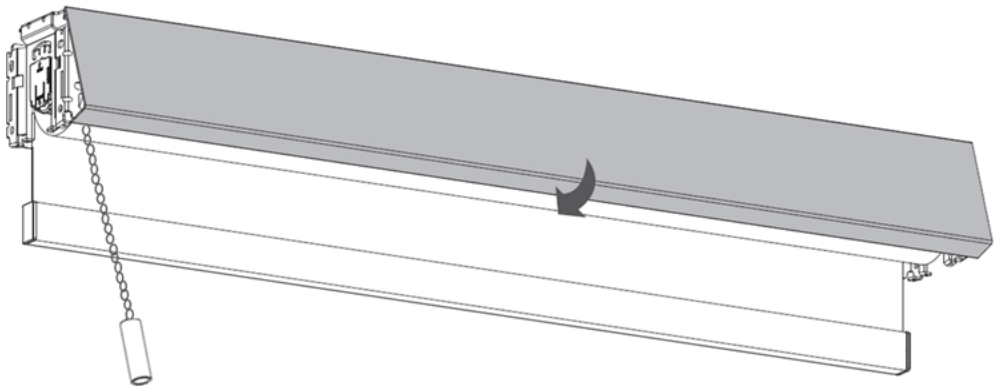
2



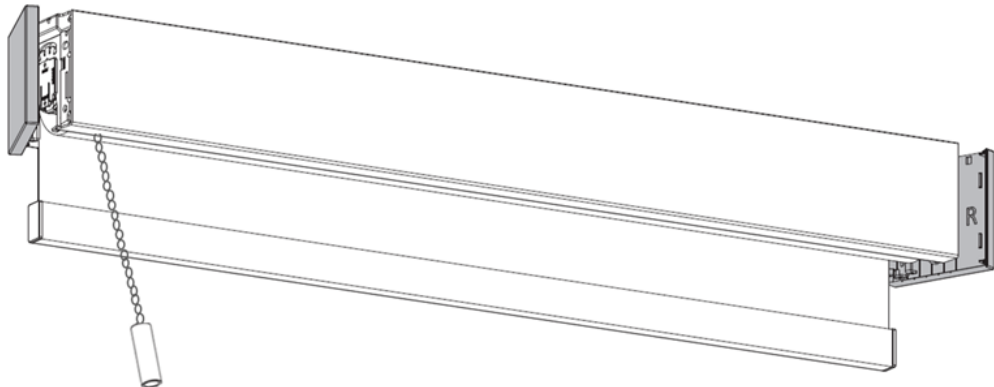
3



4

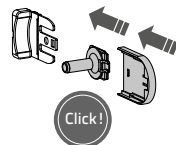
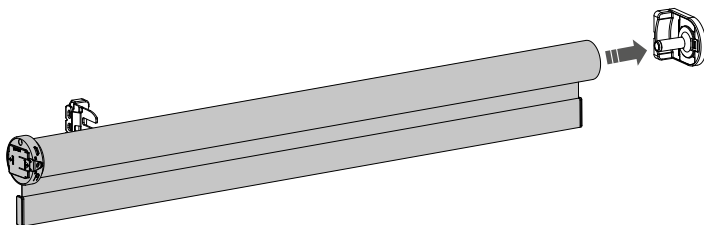
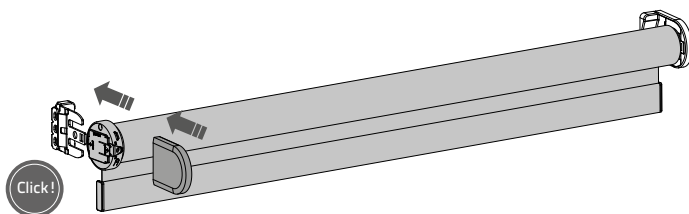
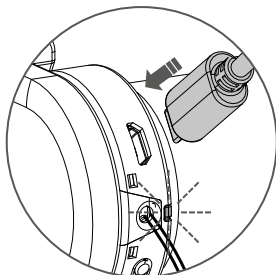


5

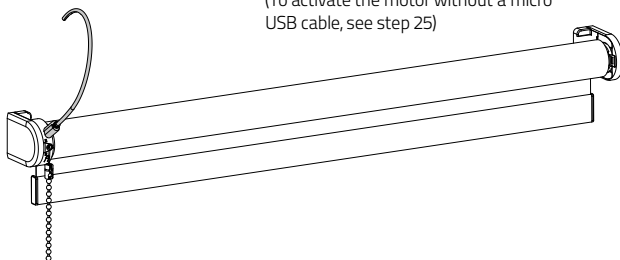


6



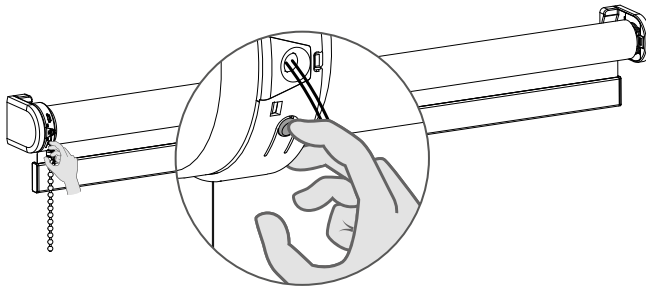
1 Install the blind**2****3****4****5** Activate the motor

Activate the motor by charging it with a micro USB cable. A green LED will start flashing. The motor can be used during charging. (To activate the motor without a micro USB cable, see step 25)



6 Pair a remote

i Pair a remote control that is able to program blinds. See pages 4 and 5 for remote control details. In this manual, CM-12 is displayed.

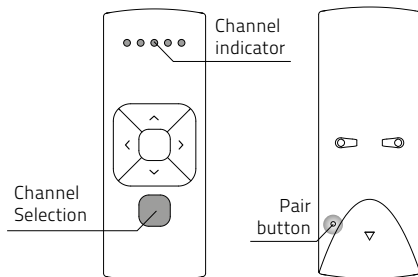


6.1 Shortly press the **program** button on the motor. The blind will start stepping, indicating that program mode has been activated. (The blind keeps stepping until the program mode is deactivated.)

6.2 Select a desired channel for the blind using the **channel selection** button on the remote control.

6.3 Press the **pair** button on the back of the remote control to pair the blind with the selected channel. The blind will shortly stop stepping, indicating that the remote has been paired to the blind.

i Repeat steps 6.1 – 6.3 to remove a blind from a channel.

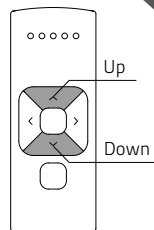
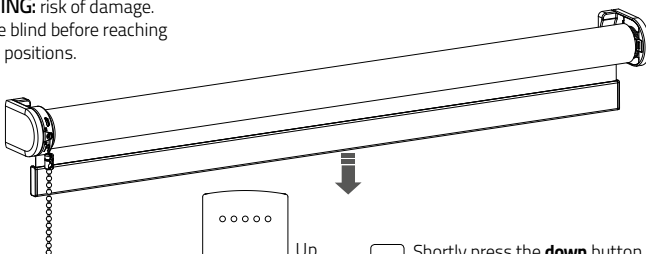


i End limits must be programmed to use a blind properly and to prevent it from being damaged. Proceed to step 12 if end limits are already set.

7 Check rotational direction



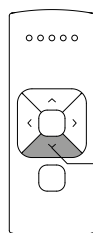
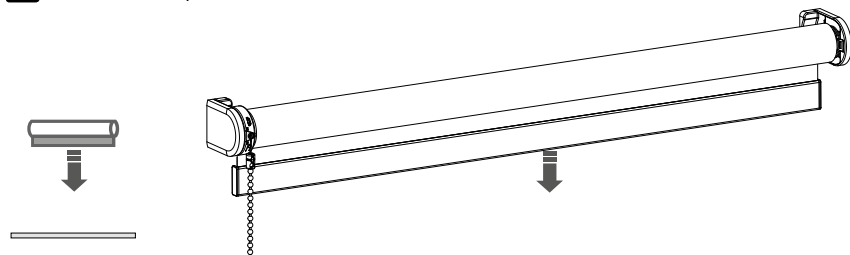
WARNING: risk of damage.
Stop the blind before reaching the end positions.



7.1 Shortly press the **down** button to check if the blind unrolls the right way. If the blind moves up, the rotational direction must be changed.

7.2 Simultaneously press the **up** and **down** button to change the rotational direction.

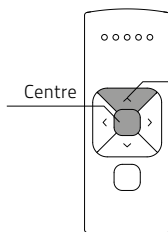
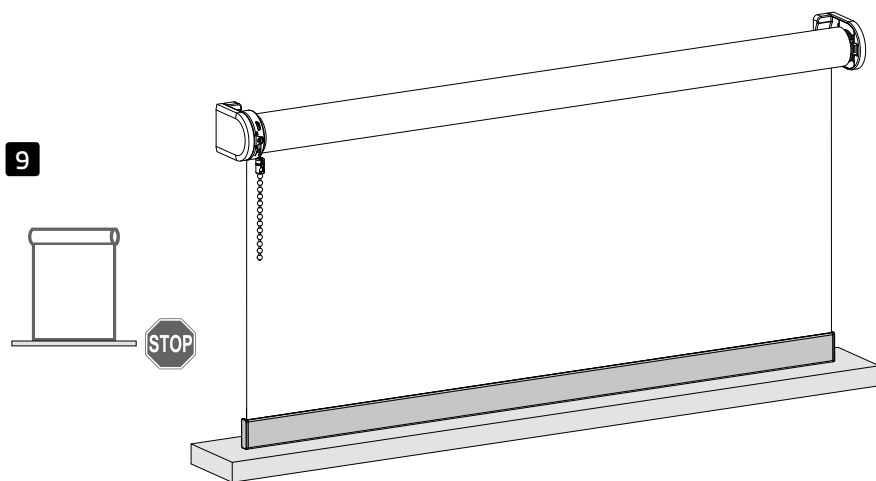
8 Set bottom position



- 8.1 Press and hold the **down** button until the blind reaches the desired bottom position.

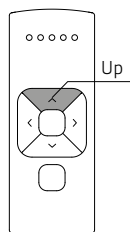
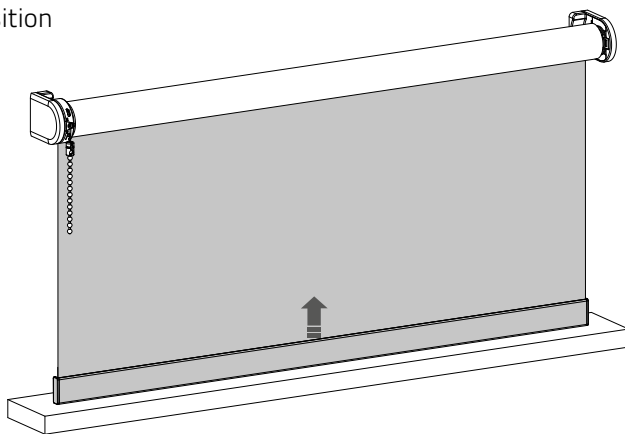
WARNING: risk of damage.
Slowly approach the bottom position.

9



- 9.1 Simultaneously hold the **centre** and the **up** button until the blind stops stepping and starts stepping again.
The bottom position has been saved.

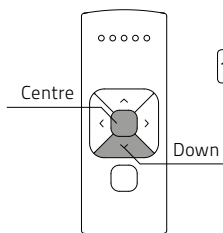
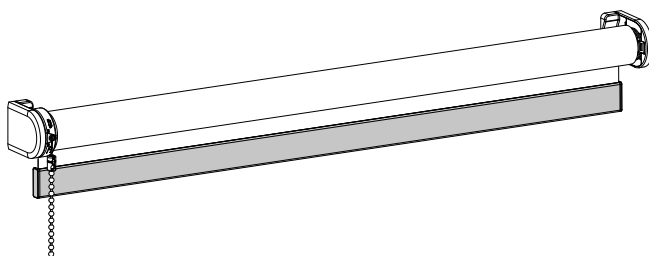
10 Set top position



10.1 Press and hold the **up** button until the blind reaches the desired top position.

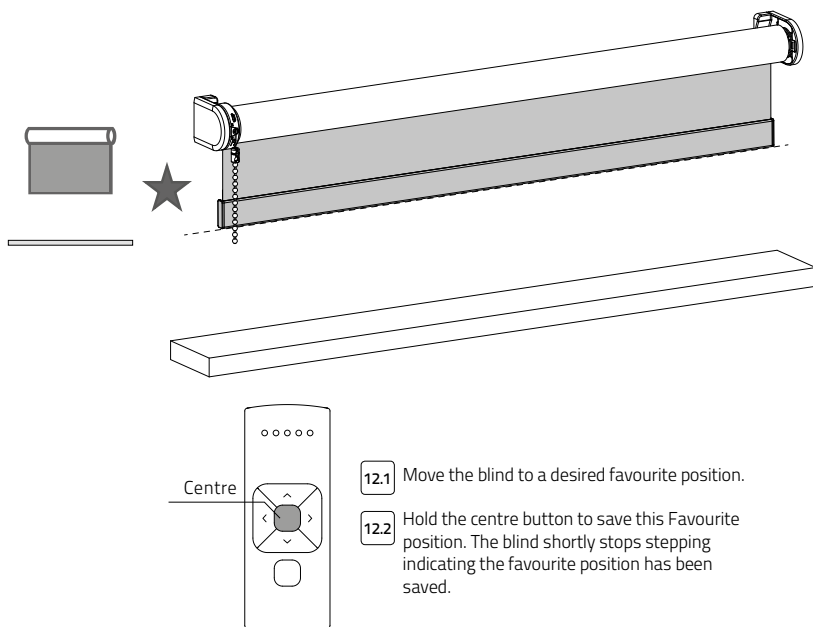
WARNING: risk of damage.
Slowly approach the top position.

11

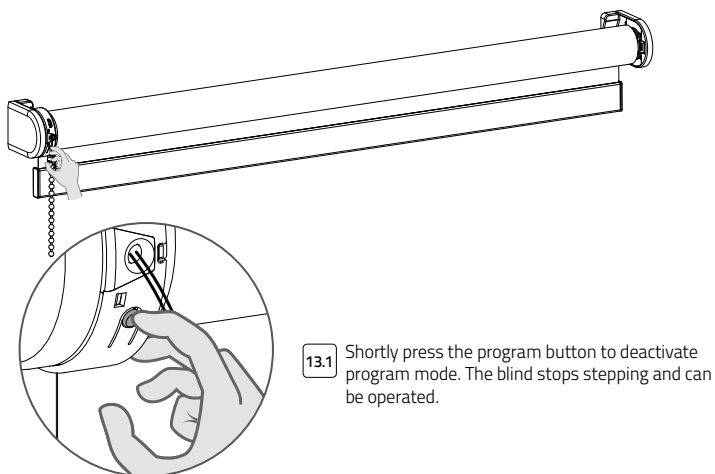


11.1 Simultaneously hold the **centre** and the **down** button until the blind stops stepping and starts stepping again.
The top position has been saved.

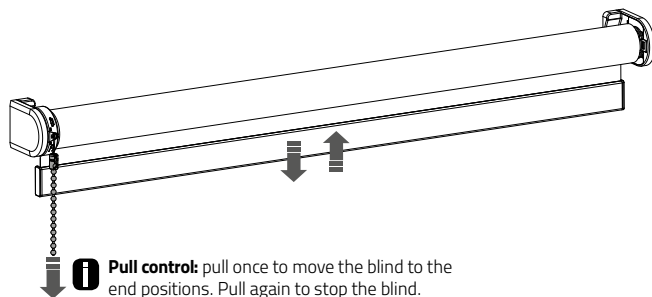
12 Set favourite position (optional)



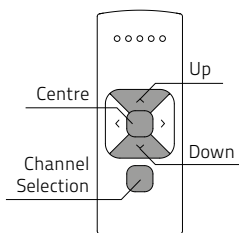
13 Deactivate program mode



14 Operate the blind

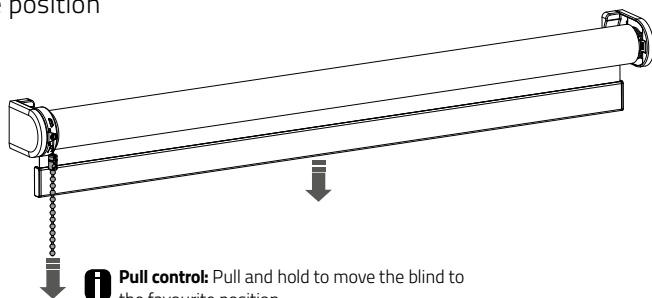
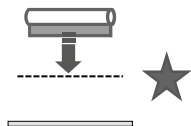


i Pull control: pull once to move the blind to the end positions. Pull again to stop the blind.

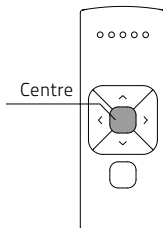


i Remote control: Choose the channel with which the blind has been paired using the **channel** button. Press the **up** or **down** button to operate the blind. Press the **centre** button to stop the blind.

15 Move to favourite position

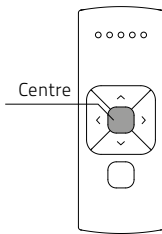
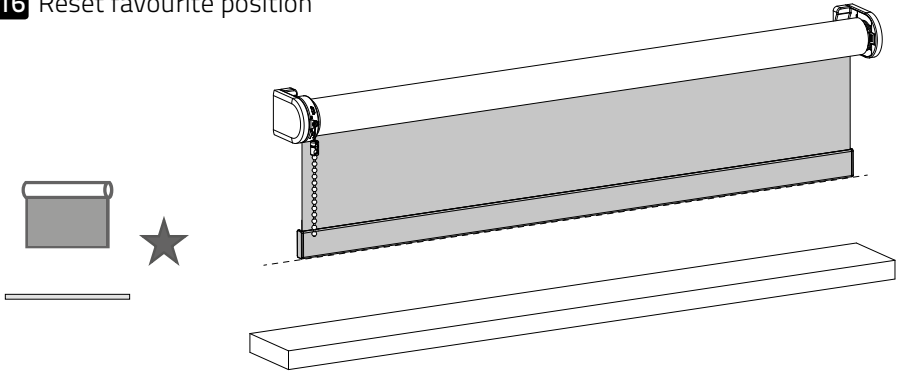


i Pull control: Pull and hold to move the blind to the favourite position.



i Remote control: press the **centre** button to move the blind to the favourite position.

16 Reset favourite position

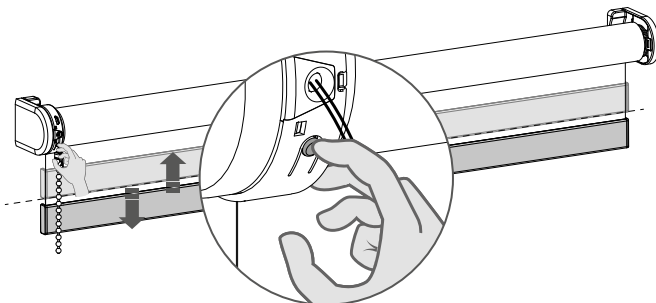


- 16.1 Move the blind to a desired favourite position.
- 16.2 Press the **program** button on the motor to activate program mode. The blind starts stepping.
- 16.3 Hold the **centre** button to save this favourite position. The blind shortly stops stepping, indicating the favourite position has been saved successfully.
- 16.4 Press the **program** button on the motor to deactivate program mode. The blind stops stepping.

17 Deactivate direct control



When pressing the up or down button on the remote control, the blind directly moves to its end positions (direct control). To operate the blind with smaller steps using the up and down button, direct control can be deactivated. Now, the blind only directly moves to its end positions when the up or down button is held longer than two seconds.



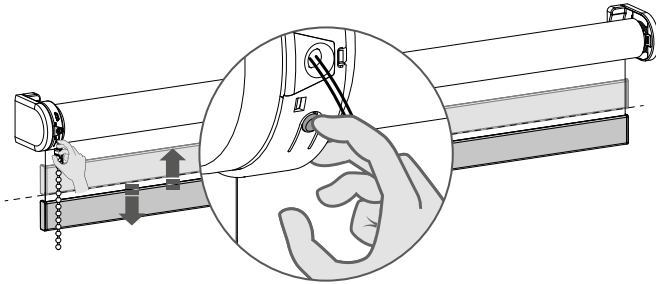
- 17.1 Press the **program** button on the motor to activate program mode. The blind starts stepping.
- 17.2 Hold the **program** button until the blind stops stepping (approximately 5 seconds) to deactivate or reactivate direct control.

18 Reset the blind



It is possible to only delete end limits or to do a factory reset.

Factory reset will delete the end limits and remove the connection to any paired remote.



18.1 Press the program button on the motor to activate program mode.



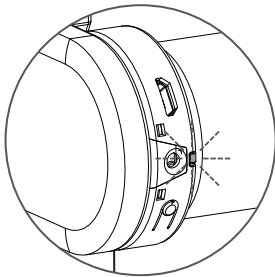
Delete end limits: to delete the end limits of the blind, hold the **program** button until the blind stops stepping for the first time, and keep holding the button until the blind stops stepping for the second time. (approximately 10 seconds)



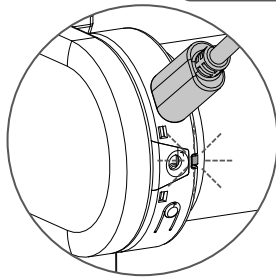
Factory reset: to reset the blind to factory defaults hold the button for at least 20 seconds. The blind will stop stepping twice. After the second stop the blind will give one extra step to confirm factory reset.

19 Recharge the battery

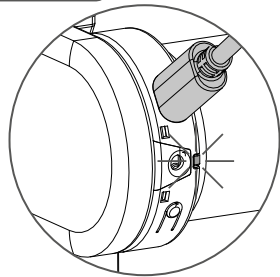
Use a micro USB cable
to charge the motor



LED light flashes
red during operation;
Charge the battery



LED light flashes
green;
battery is charging

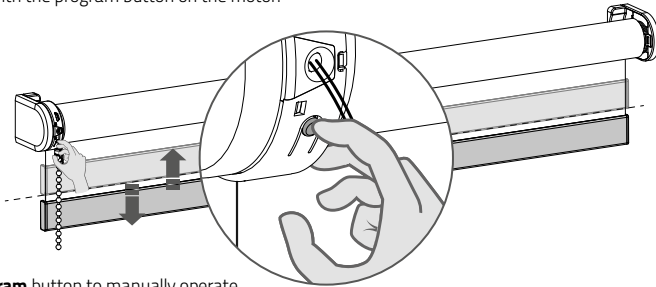


LED light constantly
green;
battery is fully charged

i Advanced options

20 Manual control

- i** In case there is no remote control or pull control, the blind can be operated with the program button on the motor.

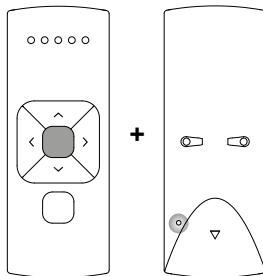


- 20.1** Hold the **program** button to manually operate the blind. The blind will move as long as the button is being pressed. (max. 15 sec.)
- 20.2** To move the blind in opposite direction, release the **program** button and repeat step 20.1.

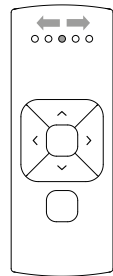
21 Single select 5 channel remote

- i** Single select makes it possible to activate program mode on a single blind through a remote control, without having to physically press the program button on the blind.

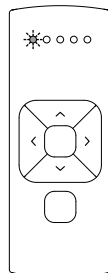
- 21.1** To activate Single select, simultaneously hold the **centre** button and press the **pair** button.



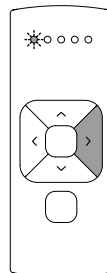
- 21.2** The remote starts searching for blinds (search mode). This is indicated by the LEDs flashing from left to right.



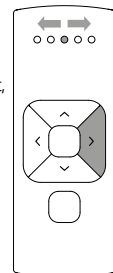
- 21.3** Once a blind is found, the channel LED will flash and the blind starts stepping, indicating that program mode has been activated. The blind can now be (un)paired to the remote and/or programmed.



- 21.4** To search for the next blind, press the **right** button. Search mode will be activated. To find the previous blind, press the left button.



- 21.5** To exit Single select, press the **right** button during search mode.



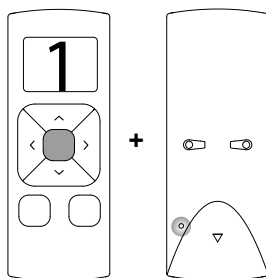
22 Single select 15 channel remote



Single select makes it possible to activate program mode on a single blind through a remote control, without having to physically press the program button on the blind.

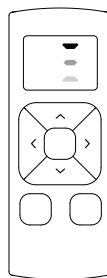
22.1

To activate Single select, simultaneously hold the **centre** button and press the **pair** button.



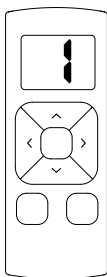
22.2

The remote starts searching for blinds (search mode). This is indicated by the horizontal bars on the remote.



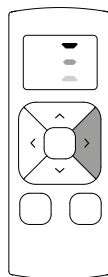
22.3

Once a blind is found, the channel number will flash and the blind starts stepping, indicating that program mode has been activated. The blind can now be (un)paired to the remote and/or programmed.



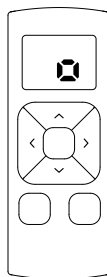
22.4

To search for the next blind, press the **right** button. Search mode will be activated. To find the previous blind, press the left button.



22.5

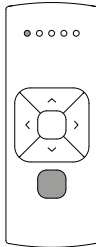
To exit Single select, press the **right** button during search mode. The display shows the letter **O**.



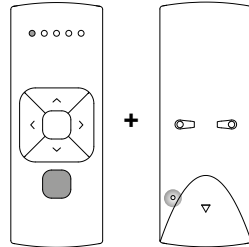
23 Channel select 5 channel remote

i Channel select makes it possible to copy blinds in between channels/remotes without having to physically press the program button on the motors.

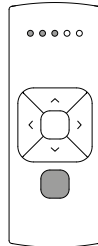
- 23.1** Select the channel from which the blinds must be copied.



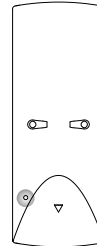
- 23.2** To activate channel select, simultaneously hold the **channel selection** button and press the **pair** button.



- 23.3** All blinds in the selected channel will start stepping, indicating program mode has been activated. All blinds can be copied to a new channel on the same remote or a different remote. Select a new channel on the (new) remote.



- 23.4** Press the pair button on the (new) remote to pair the blinds with the new channel.

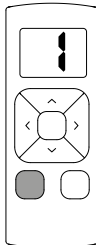


- 23.5** To exit channel select, go back to the channel selected at step 23.1 and repeat step 23.2

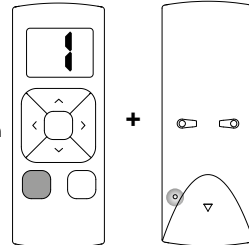
24 Channel select 15 channel remote

i Channel select makes it possible to copy blinds in between channels/remotes without having to physically press the program button on the motors.

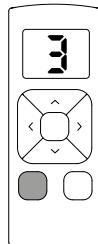
- 24.1** Select the channel you would like to copy.



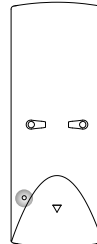
- 24.2** To activate channel select, simultaneously hold the **channel selection** button and press the **pair** button.



- 24.3** All blinds in the selected channel will start stepping, indicating program mode has been activated. All blinds can be copied to a new channel on the same remote or to different remotes. Select a channel on a (new) remote.



- 24.4** Press program button on the (new) remote to pair the blinds with the (new) remote.



- 24.5** To exit channel select, choose the channel you selected at step 24.1 and repeat step 24.2

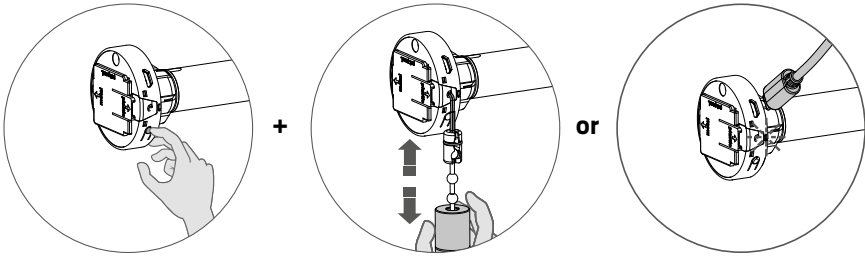
25 Activate / deactivate the motor



To prevent the blind from getting damaged, the motor has a transport mode that makes sure the blind will not be activated before installation.

25.1

Hold the program button and pull twice to activate or deactivate the motor. The motor can also be activated by charging it with a micro USB cable.



Frequently Asked Questions

Problem	Cause	Solution
Blind does not work.	Motor is in transport mode.	Activate the motor. See step 25.
	Motor battery is empty.	Charge the motor. See step 19.
	Remote battery is empty. (LEDs of remote are flashing rapidly.)	Replace the battery in the remote. See the manual of the remote.
	Remote battery is inserted incorrectly.	Replace the battery in the remote. See the manual of the remote.
	Radio-frequency interference	Make sure that the antenna of the motor is out of the way of metal objects.
	The distance from the remote to the motor is too far.	Move closer to the motor.
	The remote is not connected to the blind.	Pair the remote with the motor. See step 6.
Motor LED flashes red.	The battery of the motor is empty.	Charge the motor. See step 19.
Blind is not charging.	Charger is not plugged in or does not work.	Try a different charger or make sure the charger is plugged in the outlet.
Multiple blinds respond to a remote. (Unable to program a single blind)	Multiple blinds are paired with a single channel.	Pair the blind with a free channel to program or use single select to program the blind.
Blind moves in small steps.	1) No end limits are programmed. 2) Direct control is deactivated.	1) Program end limits. See step 8 - 11. 2) Activate direct control. See step 17.
Favourite position can not be programmed.	No end limits are programmed.	Program end limits. See step 8 - 11.
Blind lowers too far.	End limits are programmed incorrectly.	Reprogram end limits. See step 8 - 11.
Blind moves in the opposite direction.	The rotational direction has been set incorrectly.	Change the rotational direction. See step 7.
The blind keeps moving up and down.	The blind is in program mode.	Press the program button on the motor to exit program mode.